

Center City Neighborhoods

Slide Project



Fire Station No. 5 in Wesley Heights on Tuckasseegee Road

The following slides consist of images which were photographed by Tom Hanchett in 1982 as part of a Landmarks Commission project on Charlotte-Mecklenburg's Center City neighborhoods such as the Cherry, Washington Heights, Wesley Heights, University Park, Biddleville-Five Points, Belmont-Villa Heights, Optimist Park, and Elizabeth districts.

Cherry Neighborhood 1982



Home in the Cherry Neighborhood.



Church on Lulles St.



Rental Duplex on Cherry Street in Cherry Neighborhood.



Early owner-occupied house on Luther Street



Morgan School on Torrence Street in Cherry Neighborhood



Myers Chapel AME Zion on Cherry St. in Cherry Neighborhood



Streetscape of Luther Street, in the Cherry Neighborhood



House in the Cherry Neighborhood



Cherry Park, in the Cherry Neighborhood



Store in the Cherry Neighborhood



Home in Cherry Neighborhood



Streetscape of Luther Street, in the Cherry Neighborhood



Home in Cherry neighborhood.



House on Luther St.



Luther St. Sign.



Mt. Zion Lutheran Church on Luther Street, in the Cherry Neighborhood.



Cherry Neighborhood facing downtown Charlotte



Streetscape in Cherry Neighborhood



Streetscape in Cherry Neighborhood



Streetscape in Cherry Neighborhood



Cherry Neighborhood Streetscape



Store in Cherry Neighborhood



House in Cherry Neighborhood



Cherry St. streetscape



Streetscape of Baxter St. in the Cherry Neighborhood



Porch along Baxter St., in the Cherry Neighborhood



Streetscape of Luther St. in Cherry Neighborhood



Streetscape in Cherry Neighborhood



Chimney along Baxter St. in Cherry Neighborhood



Demolition on Baxter St. in Cherry Neighborhood



Home on Baxter St. in Cherry Neighborhood

Washington Heights 1982



Washington Heights St. Streetscape



House in Washington Heights



The Rev. Davenport House on Beatties Ford Rd. in Washington Heights



The Cedars, at 123 Grandin Rd. in Washington Heights



Washington Heights streetscape



Washington Heights streetscape



Seversville School, in the Washington Heights Neighborhood



Washington Heights streetscape

Wesley Heights 1982



Hovie Summit St. in Wesley Heights



Hove Summit St. in Wesley Heights



Streetscape in Wesley Heights



Streetscape- Wesley Heights



Streetscape- Wesley Heights



Streetscape- Wesley Heights



Streetscape- Wesley Heights



Front Porch in Wesley Heights

North Charlotte 1982



705 East 35th Street in North Charlotte



1211 E. 35th Street in North Charlotte



Business District in North Charlotte



576 E. 35th Street in North Charlotte



Highland Park Mill in North Charlotte



North Charlotte



1023-1025 East 36th Street in North Charlotte



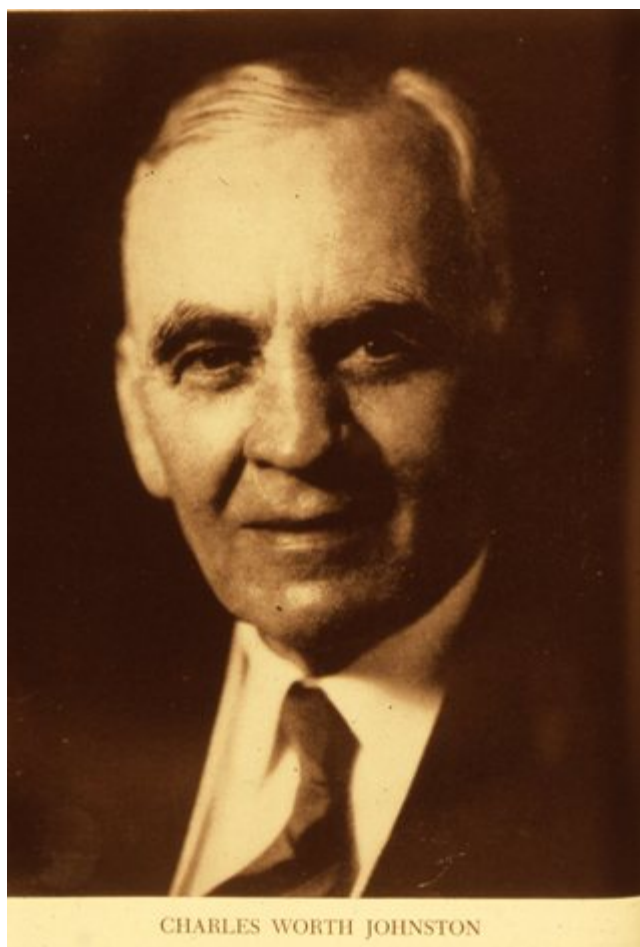
1212 East 35th Street in North Charlotte



1023-1025 East 35th Street in North Charlotte



House at the Corner of Matheson & Holt in North Charlotte



C.W. Johnston



705 East 35th Street in North Charlotte



1231 E. 35th Street in North Charlotte





Business District in North Charlotte



3447 N. Davidson Street in North Charlotte



3447 N. Davidson Street in North Charlotte



E. 36th Street in North Charlotte



Duplex in North Charlotte



702 E. 36th Street in North Charlotte



Herrin Avenue Trestle in North Charlotte



1219 E. 35th Street in North Charlotte



1211 E. 35th Street in North Charlotte



1205 E. 36th St. in North Charlotte



1101 E. 35th Street in North Charlotte



1231 E. 35th Street in North Charlotte



Corkwood Mill in North Charlotte



702 E. 36th Street in North Charlotte

North Charlotte 1982

Belmont-Villa Heights



Alpha Cotton Mill in Belmont-Villa Heights



Alpha Mill Cottages along Caldwell Street in Belmont-Villa Heights



Alpha Mill Cottage on Caldwell Street in Belmont-Villa Heights



Alpha Mill Cottages along Calinne Street in Belmont-Villa Heights



Louise Mill Cottage on Pegram Street in Belmont-Villa Heights



Streetscape of Allen Street in Belmont-Villa Heights



Charlotte Cotton Compress Company on Brevard Street in Belmont-Villa Heights



Streetscape of typical street in Belmont-Villa Heights



Christ King Center in Belmont-Villa Heights



Belmont-Villa Heights streetscape



North Belmont-Villa Heights Architectural Detail



Belmont-Villa Heights streetscape



Victorian streetscape along Harrill Street in Belmont-Villa Heights



Cotton warehouse on Brevard Street in Belmont Villa Heights



Church on Pegram Street in Belmont-Villa Heights



Detail of windows on the Church on Pegram Street in Belmont-Villa Heights



St. Paul Baptist Church on Allen Street in Belmont-Villa Heights



Highland Park Mill in Belmont-Villa Heights



Louise Mill Cottages along Louise Avenue in Belmont-Villa Heights



Parkwood ARP Church on Parkwood Avenue in Belmont-Villa Heights



Parkwood ARP Church on Parkwood Avenue in Belmont-Villa Heights



Swift Company on North Brevard Street in Belmont-Villa Heights



Piedmont Courts on 10th Street in Belmont-Villa Heights



Piedmont Courts (internal view) on 10th Street in Belmont-Villa Heights



Piedmont Courts (external view) on 10th Street in Belmont-Villa Heights



Shotgun houses along Belmont Avenue in Belmont-Villa Heights



Skyview of Belmont-Villa Heights



Streetscape of Belmont-Villa Heights



Biddleville-Five Points 1982



The Rehabbed House on Campus Street in Biddleville



Streetscape of Solomon Street in Biddleville



Stone from the Cemetery in Biddleville



Mt. Carmel Church in Biddleville



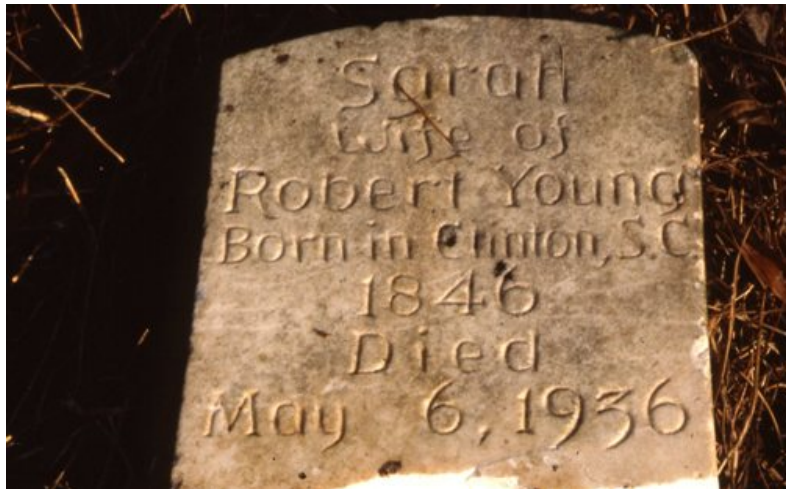
Mt. Carmel Church in Biddleville



House on Campus Street in Biddleville



George E. Davis Hall at JCSU Campus in Biddleville



Stone from Cemetery in Biddleville



Map of Biddleville



Cemetery in Biddleville



Cemetery in Biddleville



Biddle Hall -detail JCSU campus in Biddleville



Biddle Hall on JCSU Campus in Biddleville



Funeral Art in the Biddleville Cemetery



Funeral Art in the Biddleville Cemetery



Postcard of Johnson C. Smith University from Mint Postcard Collection



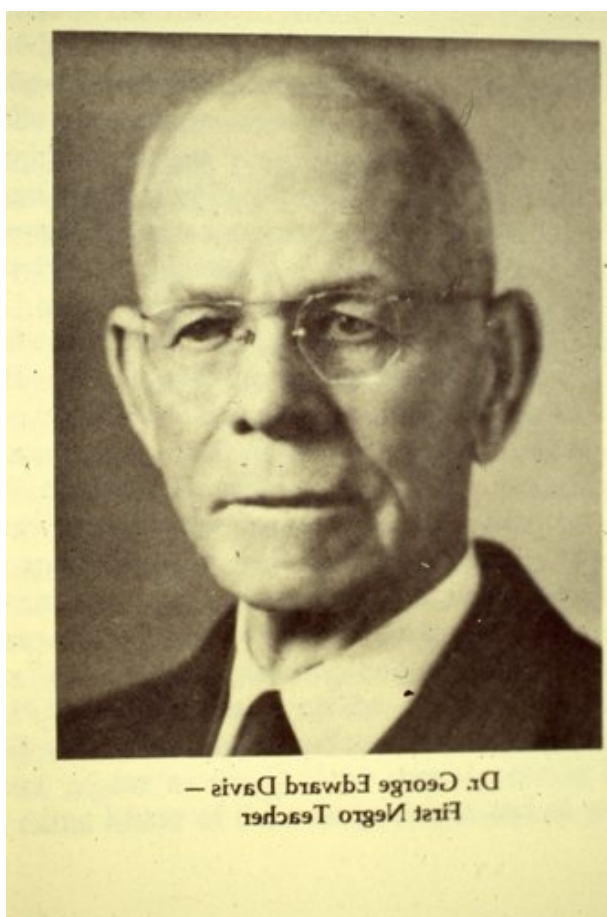
JCSU Carnegie Library in Biddleville



Skyline of JCSU in Biddleville



JCSU Entry Gates in Biddleville



George E. Davis- First Negro Teacher



Mrs. Johnson C. Smith



Biddle Hall on JCSU Campus in Biddleville



Mt. Carmel Baptist Church, located on 529 Campus Street in Biddleville



House on Campus Street in Biddleville



Double shotgun house on Summitt Avenue in Biddleville



House in Biddleville



Map of Biddleville



Biddleville



Row Houses in Biddleville



House in Biddleville



Bungalow on Campus Street, in Biddleville



Streetscape of the 300 block of Campus Street in Biddleville



Streetscape in Biddleville



Streetscape in Biddleville



Streetscape in Biddleville



200 Martin Street in Biddleville



Streetscape of Frazier Street in Biddleville



Streetscape of Wake Street in Biddleville



Detail of House in Biddleville



Rehabilitation work on House located on Campus St.



Streetscape of Beatties Ford Road in Biddleville



Pharr Building on Beatties Ford Road in Biddleville



Home in Biddleville



Streetscape of Summit Street in Biddleville



Pharr Building- detail of signage



Mt. Carmel Baptist Church-detail of interior



Streetscape of 529 Campus St.- including Mt. Carmel Baptist Church



Mt. Carmel Baptist Church- back



Mt. Carmel Baptist Church- detail of interior

Elizabeth Neighborhood 1982



The Visualite Theatre in Elizabeth



Streetscape of Greenway Road in Elizabeth



Apartments on Louise Avenue in Piedmont Park



Elizabeth Water Tower



Seventh Street Streetscape in Elizabeth



Martha Washington Homes on Kenmore Avenue in Elizabeth



Fire Training Center, located at Palmer Fire School on 7th Street



1901 Park Drive in Elizabeth



Belk House on Hawthorne Lane at Presbyterian Hospital in Elizabeth



House in Elizabeth



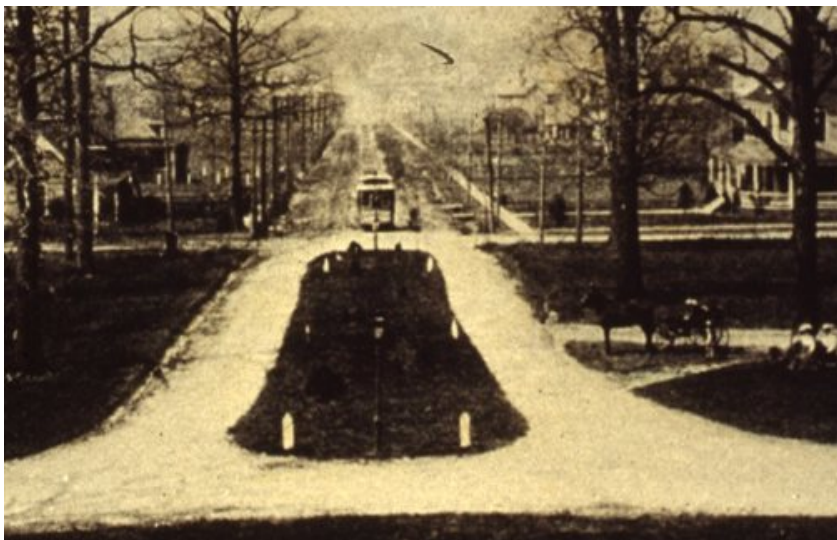
Streetscape in Elizabeth neighborhood



8th Street in Elizabeth



Used to be Elizabeth



Elizabeth Avenue- period photograph



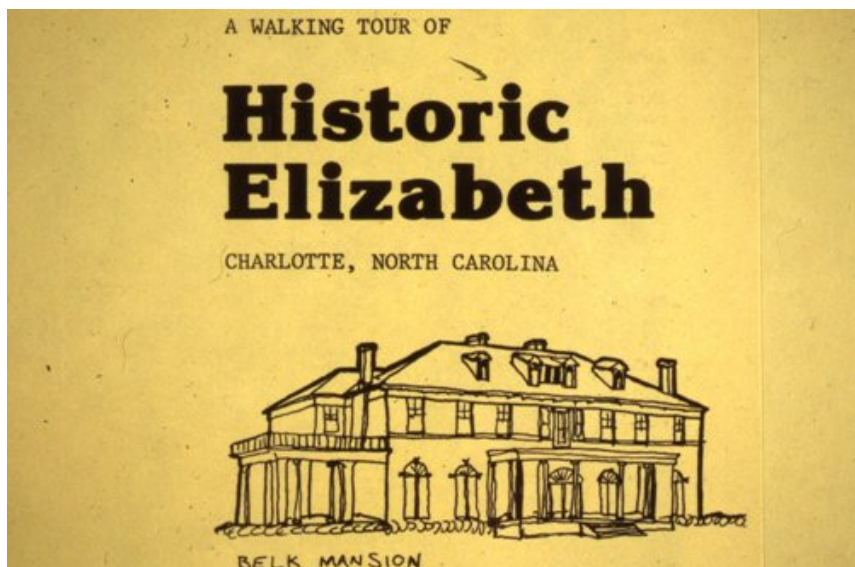
Streetscape in Elizabeth



House in Elizabeth



House on the corner of 7th and Louise Street in Elizabeth



Elizabeth Walking Brochure



Mercy Hospital Additions- detail of back



Streetscape of Greenway Avenue in Elizabeth



Photograph in Elizabeth slide box



The Biberstein House in the Elizabeth Neighborhood



The Biberstein House in the Elizabeth Neighborhood



The Jake Newell House- in Elizabeth at 819 Sunnyside Avenue



Kings College in Elizabeth



Mercy Hospital in Elizabeth



Streetscape of Sunnyside Avenue in Elizabeth



Streetscape of Elizabeth



House in Elizabeth Neighborhood



House at the corner of 7th and Louise Streets in Elizabeth Neighborhood



Houses on Louise Avenue in Piedmont Park



House on Louise Avenue in Piedmont Park



House on Louise Ave. in Piedmont Park



Greenway Avenue in Elizabeth



Sunnyside Rose Garden in Elizabeth



Front porch of home in the Elizabeth Neighborhood



House located in Elizabeth Neighborhood



House located in Elizabeth Neighborhood



Streetscape of Elizabeth Neighborhood

A SPECIAL OFFERING OF CHOICE HOME SITES

ROSEMONT

East Fifth, Greenway and East Seventh Streets

FULLY IMPROVED LOTS—
 With every public utility, such as paved streets, sidewalks, sewers, city water, gas and electricity. Every lot is ready to be built upon. Excellent street car service touches ROSEMONT on East Seventh Street. Every lot lies high and dry. Frontages range from 55 to 75 feet, with depths up to over 200 feet. The opening of E. Fifth Street with its connection with E. Seventh Street (see map inside this folder) provides an additional outlet for traffic in this section.

GREENWAY
IN ROSEMONT.
NOTE THE
TYPE OF
HOME CON-
STRUCTION.
PROPER RE-
STRICTIONS
PROTECT
YOU

FUTURE
VALUES OF
LOTS DEPEND
ON CLASS OF
HOMES
BUILT. IN
ROSEMONT NO
UNDESIRABLE
ELEMENTS
CAN INTRUDE.

TERMS: 1/4 CASH—BALANCE 1-2-3 YEARS
 For Prices See Itemized Price List and Map Inside This Folder
 Three Per Cent. Discount Allowed for All Cash Sales

670 HOMES ERECTED DURING 1923
 The number of new homes necessary to provide for Charlotte's continued growth will increase each year. You will readily see the necessity of securing NOW a desirable lot in such a section as ROSEMONT, where all utilities are provided and where every element for future enhancement exists. Phone us at once for appointment. This special offering closes June 1st.

E. C. Griffith Company, Realtors
 EXCLUSIVE AGENTS

7 WEST FOURTH ST. PHONE 87

LAWRENCE TITLE & TRUST CO.

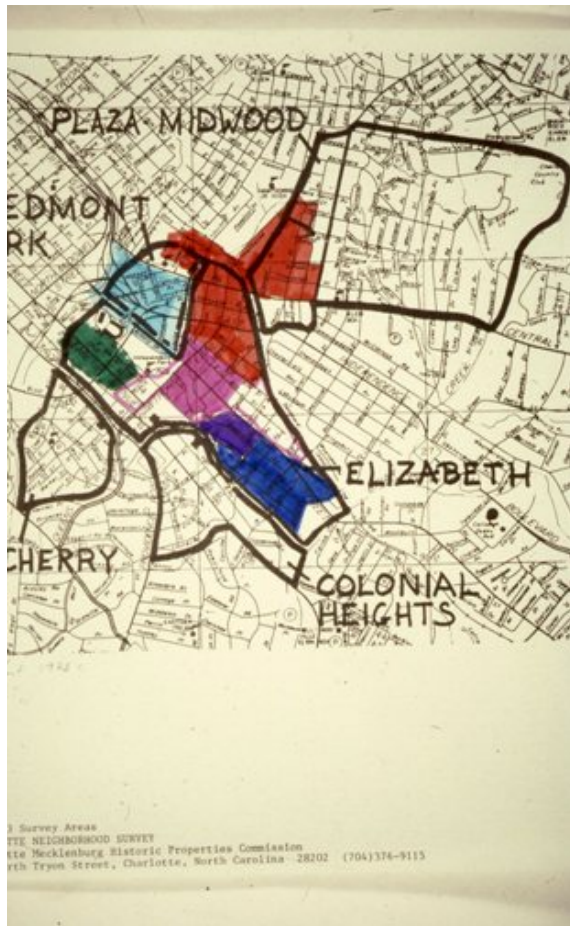
Rosemont Homes- E. Fifth, Greenway, & Seventh Streets advertisement



Palmer Fire school, located on 7th Street in Elizabeth



Reverend Detwiller House, located on Sunnyside Avenue in Elizabeth



Map of Charlotte Historic Districts



Palmer Fire School, located on East 7th Street in Elizabeth



Rosemont Flyers from the "Lawyers Title Collection"



Streetscape in the Elizabeth Neighborhood



House in the Elizabeth Neighborhood



The C.W. Parker House, located in the Elizabeth Neighborhood, at 901 Central Avenue



C.W. Parker House II, located at 901 Central Avenue in the Elizabeth Neighborhood



Rechliner House, located in the Elizabeth Neighborhood



Postcard of the Sunnyside Rose Garden, located in Elizabeth



Map of the Elizabeth subdivisions



Presbyterian Hospital



Belk House, on Hawthorne Lane in Elizabeth



House in Elizabeth



House in Elizabeth



Mercy Hospital in Elizabeth



Old photograph of Elizabeth College Campus



Mercy Hospital Campus



House in an Elizabeth Neighborhood



The Thad Adams House, located at 604 Clement Avenue in Elizabeth



Caswell Street in Elizabeth



A&P Building, located on East 7th Street, in Elizabeth



1521 Elizabeth Avenue, in Elizabeth



House on Weddington Avenue, in Elizabeth



House on Louise Avenue, in Piedmont Park Neighborhood



House at 813 Sunnyside Avenue, in Piedmont Park Neighborhood



House, converted shops on Louise Avenue, in Piedmont Park Neighborhood



1901 Park Drive, in the Elizabeth Neighborhood



House in an Elizabeth Neighborhood



5th Street trees in Elizabeth Neighborhood



5th Street trees in Elizabeth Neighborhood



2128 Greenway Street, in the Elizabeth Neighborhood



1612 Elizabeth Avenue, in the Elizabeth Neighborhood



1612 Elizabeth Avenue, in the Elizabeth Neighborhood



1612 Elizabeth Avenue, in the Elizabeth Neighborhood



Interior detail of Barbershop on Pecan Avenue, in Elizabeth Neighborhood



Barbershop on Pecan Avenue, in Elizabeth Neighborhood



Bungalow style House on 7th Street, in Elizabeth



7th Street Houses



Streetscape of street in an Elizabeth Neighborhood



House on Louise Avenue, in Piedmont Park Neighborhood



Streetscape in Elizabeth Neighborhood



Streetscape in Elizabeth Neighborhood



Old Photograph, #121 Elizabeth



Old Photograph of Elizabeth College



Postcard of Presbyterian Hospital, in Elizabeth Neighborhood



St. John's Baptist Church, located at 300 Hawthorne Lane, in Elizabeth



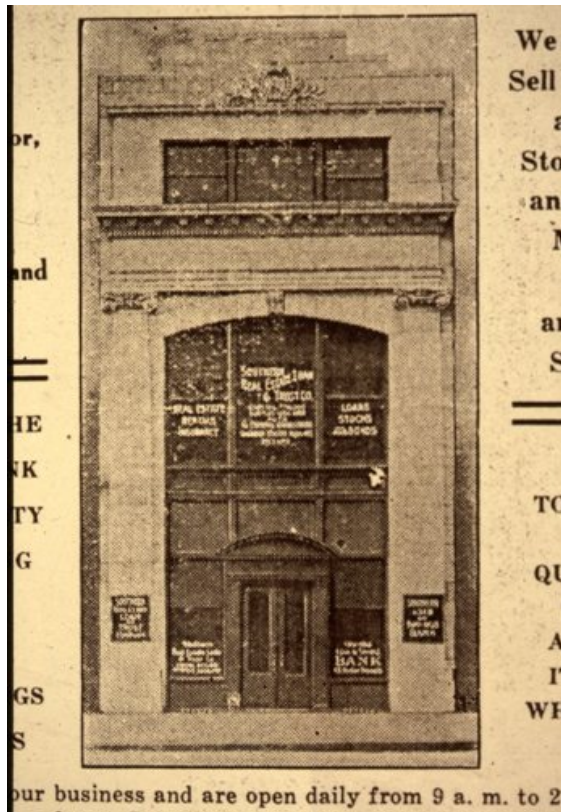
Spoon's Restaurant in the Elizabeth Neighborhood



Streetscape of 7th Street



House in Elizabeth Neighborhood



Photograph from City Directory of Real Estate Building



House on Caswell Road, in Elizabeth Neighborhood

Plaza-Midwood Neighborhood 1982



Mecklenburg Avenue, Plaza-Midwood



2427 Meck Avenue



Chatham Estates Brochure (The Plaza)

Plaza-Midwood Neighborhood 1982



Victoria House, Plaza Midwood



Porch Detail, Thomas Avenue



Charlotte Country Club



2415 Mecklenburg Avenue in Plaza-Midwood



1501 The Plaza in Plaza-Midwood



1501 The Plaza in Plaza-Midwood



House on Mecklenburg Avenue in Plaza-Midwood



2320 Mecklenburg Avenue in Plaza-Midwood





John Crosland, Sr. Home, located on 3021 Belvedere in Plaza-Midwood



1801 The Plaza in Plaza-Midwood



Ho-Toy Restaurant, located on Thomas Avenue in Plaza-Midwood



House located on Thomas Avenue in Plaza-Midwood



Charlotte Country Club, located in Plaza-Midwood



1912 Belvedere, located in Plaza-Midwood



1908 Belvedere, located in Plaza-Midwood



2448 Mecklenburg Avenue, located in Plaza-Midwood



1912 Belvedere Avenue, located in Plaza-Midwood



Houses on Clement Avenue in Plaza-Midwood



Shotgun Houses on Clement Avenue in Plaza-Midwood



House located on Thomas Avenue in Plaza-Midwood



Pure Oil Station, located on Central Avenue in Plaza-Midwood



Detail of Pure Oil Station, located on Central Avenue in Plaza-Midwood



Pure Oil Station, located on Central Avenue in Plaza-Midwood



The Plaza, streetscape



Midwood School, located on Central Avenue in Plaza-Midwood



Midwood School, located on Central Avenue in Plaza-Midwood



The Plaza, streetscape in 1983





House on Belvedere Avenue in Plaza-Midwood



Streetscape of Thomas Avenue in Plaza-Midwood



Houses along The Plaza, in the Plaza-Midwood Neighborhood



Streetscape of Central Avenue in Plaza-Midwood



Dairy Queen on Central Avenue in the Plaza-Midwood area



Chatham Estates Brochure (H.M. Victor Home in photograph)



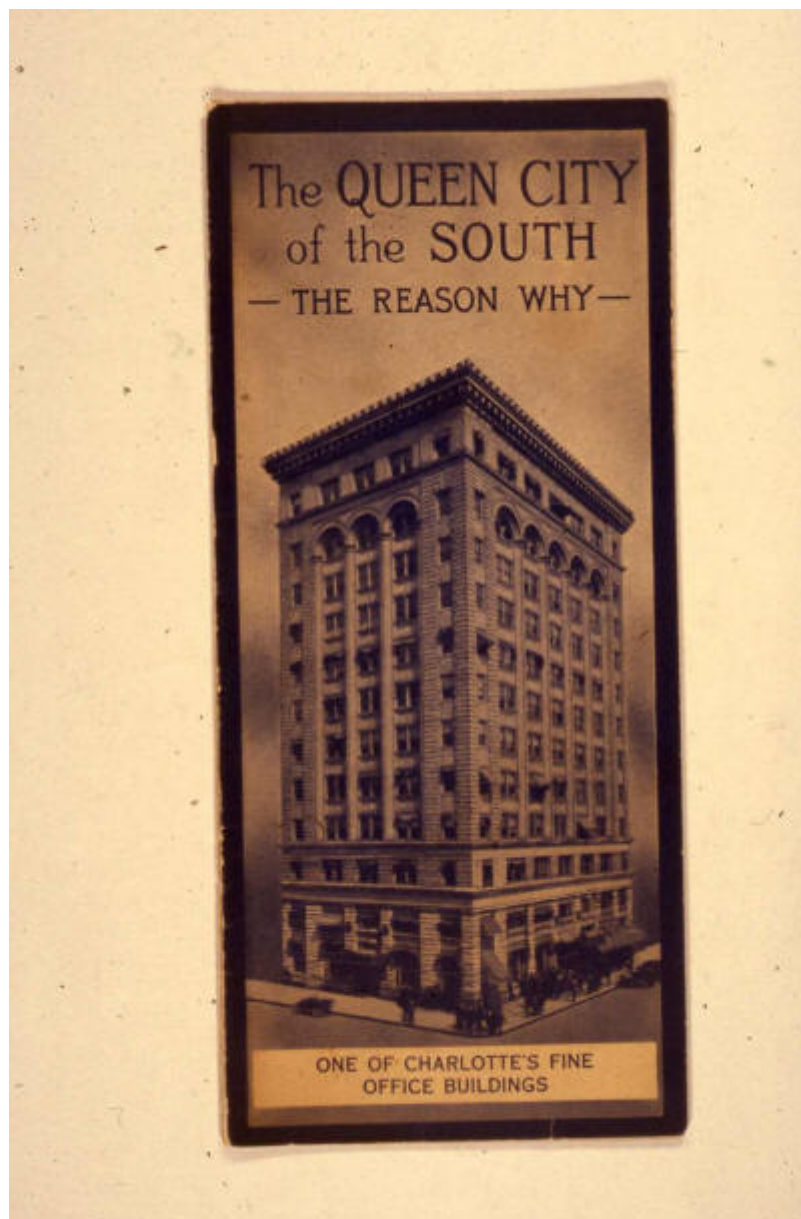
Cole Manufacturing Plant Building, located on Central Avenue



Cole Manufacturing Plant Building, located on Central Avenue



Chatham Estates Brochure (original) - Country Club



Chatham Estates Brochure



House on Belvedere Avenue, located in Plaza-Midwood



1733 The Plaza (rear), located in Plaza-Midwood



1900 Belvedere Avenue, located in the Plaza-Midwood Neighborhood



1733 The Plaza, located in Plaza-Midwood



House on Mecklenburg Avenue, located in Plaza-Midwood



Harris Teeter #1, located at 1704 Central Avenue



Site of Lauton House on the corner of Belvedere and Mecklenburg Avenues, in Plaza-Midwood



1900 Belvedere Avenue, Plaza-Midwood



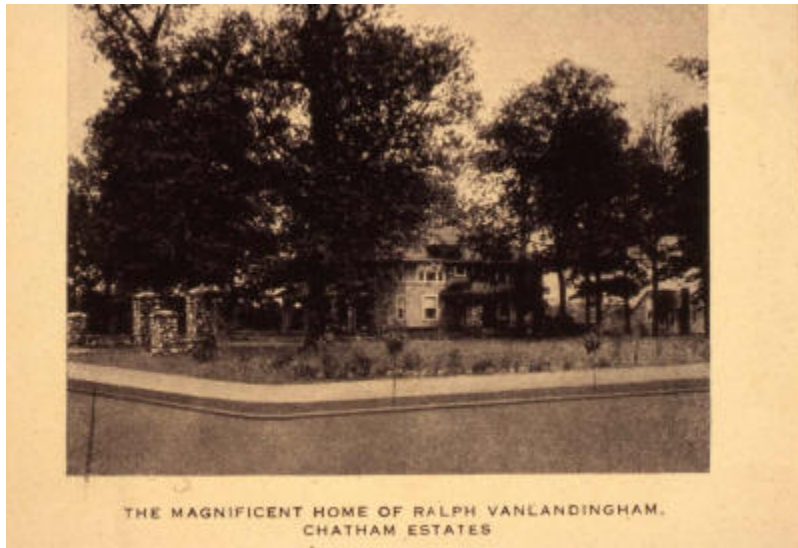
House located on Belvedere Avenue in Plaza-Midwood



1511 The Plaza, in Plaza-Midwood



Bridge Detail



Chatham Estates Brochure of VanLandingham House



Bishop Kilgo House, Located on The Plaza in Plaza-Midwood



Spanish Style Home on Thomas Avenue in Plaza-Midwood



1331 Pecan, in Plaza Midwood



1415 Pecan Avenue in Plaza-Midwood



1428 Pecan, in Plaza-Midwood



1212 Clement Avenue, in Plaza Midwood



1340 Pecan, in Plaza Midwood



1326 Pecan, in Plaza-Midwood



1443 Pecan Avenue, in Plaza-Midwood



1331 Pecan Avenue, in Plaza-Midwood



Pecan Streetscape



1443 Pecan Avenue, in Plaza-Midwood





Filling Station, located on Central Avenue in Plaza-Midwood



1400 Pecan Avenue, in Plaza-Midwood



1400 Pecan Avenue, in Plaza-Midwood



2245 Mecklenburg Avenue in Plaza-Midwood



The Bonfoey House, located at 1723 Mecklenburg Avenue, in Plaza-Midwood



2448 Mecklenburg Avenue



Kraig Richard's Gameroom, located on the corner of Pecan and Central Avenues in Plaza-Midwood



1521 & 1525 Thomas Avenue



1521 Thomas Avenue



1409-11 Thomas, in Plaza-Midwood



2816 Belvedere Avenue, in Plaza-Midwood



House on Belvedere Avenue in Plaza-Midwood



Phil's Dinette, located on Central Avenue in Plaza-Midwood



House on Central Avenue in the Plaza-Midwood neighborhood



1405 Haywood Avenue



Sunoco, located on Central Avenue in Plaza-Midwood



Streetscape of Belvedere Avenue



Geo Cramer Pond, located at 12733 Country Club Lane, in Plaza-Midwood



Plaza Theatre sign, located at 1610 Central Avenue



1216 Clement Avenue, in Plaza-Midwood



Spanish style house on Thomas Avenue



House on Clement Avenue



Sunoco, located on Central Avenue



1319 Thomas Avenue, located in Plaza-Midwood



Map depicting growth of Plaza-Midwood



1409 Thomas Avenue, in Plaza-Midwood



Streetscape of the Plaza



1130 Clement Avenue



House on Thomas Avenue, in Plaza-Midwood neighborhood



2817 Belvedere Avenue, located in the Plaza-Midwood neighborhood



1323 Thomas Avenue



House on Thomas Avenue in Plaza-Midwood



1126 Clement Avenue, Plaza-Midwood



Laxton House- WBT Radio Site, located at the corner of Belvedere and Mecklenburg Avenues in Plaza-Midwood



House located along The Plaza



House located on Clement Avenue in the Plaza-Midwood neighborhood



House located on Matheson Street, Plaza-Midwood



House on Mecklenburg Avenue, located in the Plaza-Midwood neighborhood