

Pineville village , North Carolina

Visual Survey Spring 2021

Historical Background

Located eleven miles south of Charlotte near Little Sugar Creek, Pineville has its roots in a small community established here in the early nineteenth century. The settlement was named Morrow's Turnout for one of the area's early white families. In

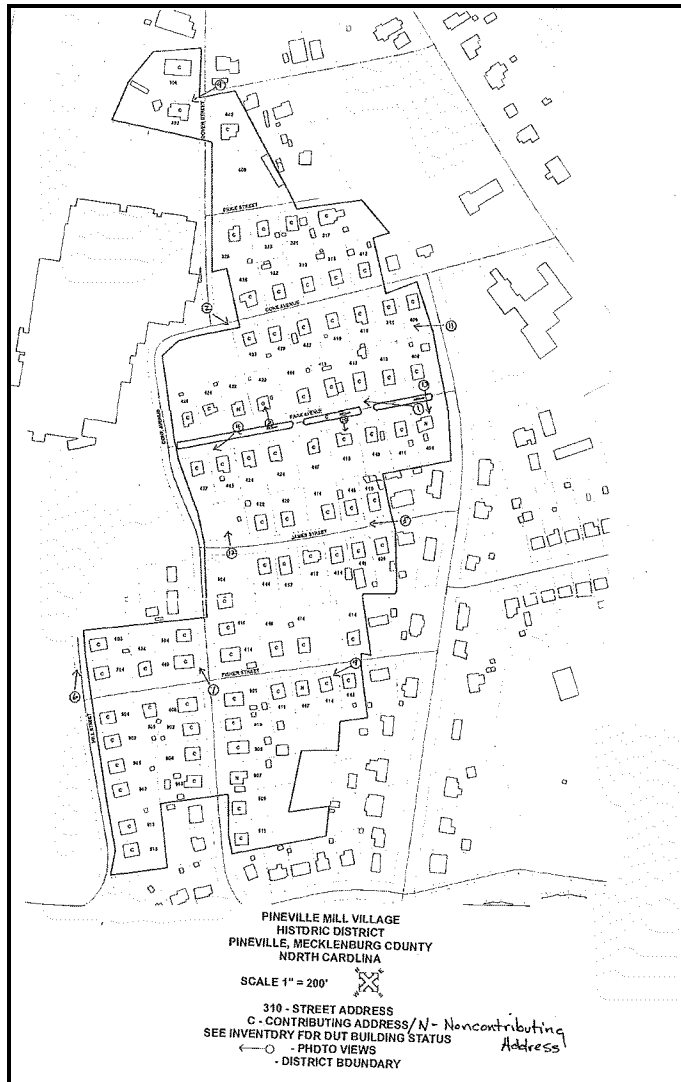
1869, the Charlotte,

Columbia, and Augusta Railroad--created from the merger of the Charlotte and South Carolina Railroad and the Columbia and Augusta Railroad--established a passenger and freight station at Morrow's Turnout. In 1873 the community was incorporated as Pineville, according to local lore named for a nearby stand of pine trees. In 1894, the railroad became part of the vast Southern Railway system that integrated Pineville, Mecklenburg County, and the Piedmont into a national network of rail lines. This new connectivity would ultimately link Pineville to far-flung markets, and draw industries—especially cotton mills—to the town and the region (Blythe and Brockman 1961: 259-262, 417-422; Charlotte Observer 21 May 1967).

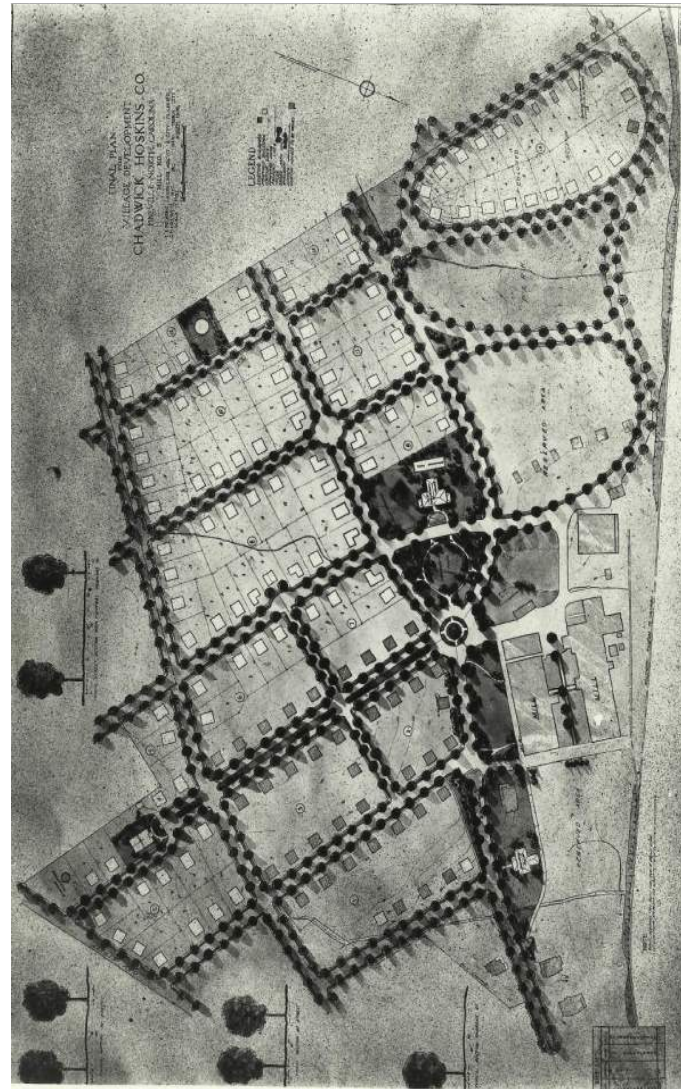
Pineville was part of a great network of small railroad towns that emerged throughout region after the Civil War. Between the Civil War and 1900, new rail lines spurred the growth of over 200 towns in North Carolina. The majority of these rail towns were in the Piedmont, which by the early twentieth century was becoming the center of the nation's textile industry. In Mecklenburg County, the towns of Pineville, Matthews, Huntersville, and Cornelius were founded along railroad lines in this period. (Tullos 1989: 135-140; Glass 1992: 57-58).

Source : <http://landmarkscommission.org/wp-content/uploads/2017/08/Park-Avenue-SR.pdf>

Pineville village , North Carolina



Historic District Map



Earle Sumner Draper, Final plan
for village development, Chadwick
- Hoskins Company March 1920,

Source: North Carolina Collection,
University of North Carolina.



Arial View of Cone Mills and Pineville Mill Village 1948

Source James Maynard, A.I.A. Charlotte North Carolina

Pineville village visit / October 25th-2020

I started by Driving on park ave, to be familiar with the area. Such a nice rain falling on Halloween ornaments and colorful leaves on the ground, with the background of that little houses. It looked like beautiful photography on the wall, from a rainy fall with empty streets, people spending inside their houses.

At first look, the similarity in Structure/ front porch, doors, and other architectural elements were obvious.

In other streets still, we can see the similarity but also differentiation, some of the streets with bigger homes may be newer or renewed some properties. That it needs investigation and re visit.

Another potential that attracted me was beautiful little stores, it makes the area more sustainable, and comfortable for residents to walk to their small retails. It brings safety to the area compare to having big shopping center and driving distance.

I consider it as a potential for the neighborhood and preserving the historical properties.



Intersection Dover st. and Main st. 25 October 2020



Intersection Dover st. and Main st. 25 October 2020



Intersection Dover st. and Main st. 25 October 2020

Note: in the quick tour I recognized, the house "402 Dover street "did not exist anymore!



The map displays the Mill Village Historic District in Parkville, Missouri. The district is bounded by a blue line and contains numerous mill houses, each labeled with a unique identifier (e.g., MK2944, MK2945, MK2946, MK2947, MK2948, MK2949, MK2950, MK2951, MK2952, MK2953, MK2954, MK2955, MK2956, MK2957, MK2958, MK2959, MK2961, MK2962, MK2963, MK2964, MK2965, MK2966, MK2967, MK2968, MK2972, MK2973, MK2974, MK2975, MK3068). The streets shown include Cone Ave., Park Ave., Lakeview Dr., and Price St. A purple dashed line indicates a proposed historic district boundary. A yellow icon with a list symbol is located near 429 Cone Ave. A note on the right side of the map states: "Note: 412 Cone Ave. is not in the area and 429 Cone Ave. is a complainant's property. 415 Cone Ave. is Henson's property and is about Lakeview Dr. designated as a historic district." The map also shows the "PINEVILLE MILL VILLAGE HISTORIC DISTRICT 2011" and "MK1252 PINEVILLE MILL VILLAGE HISTORIC DISTRICT 2011".

415 Cone Ave, Owner Wayne Henson interested on information about Landmark and their house if designated as historic property

415 Cone Ave.



412 Cone Ave.



412 Cone Ave.



412 Cone Ave.



409 Cone Ave.



411 Cone Ave.



416 Cone Ave.



419 Cone Ave.



428 Cone Ave.



423 Cone Ave.



433 Cone Ave.

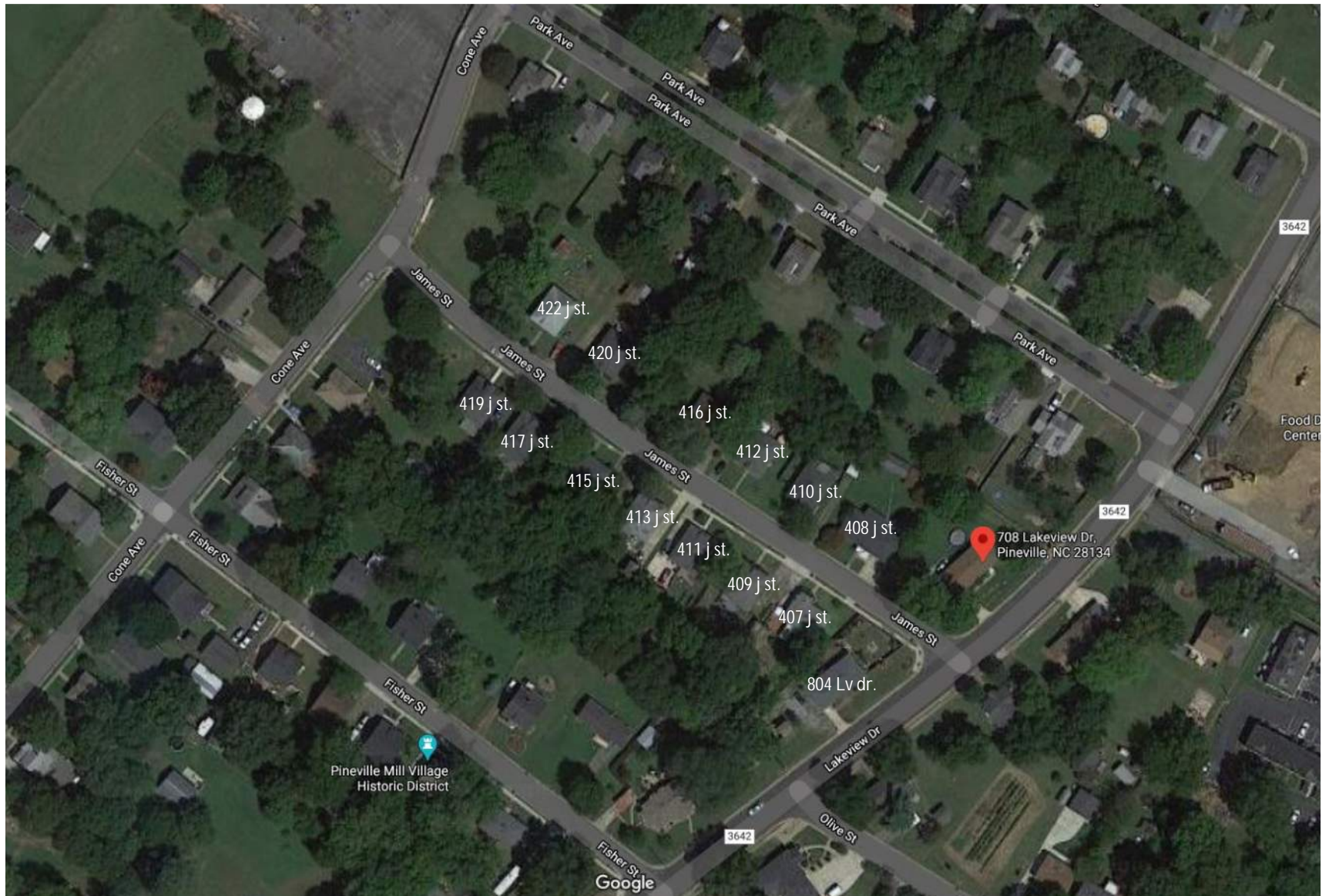
422 Cone Ave.



429 Cone Ave.



James Street.



James street

804 Lake view dr.



407 James st.



408 James st.



409 James st.



410 James st.



411 James st.

412 James st.



413 James st.

416 James st.



415 James st.



417 James st.



419 James st.



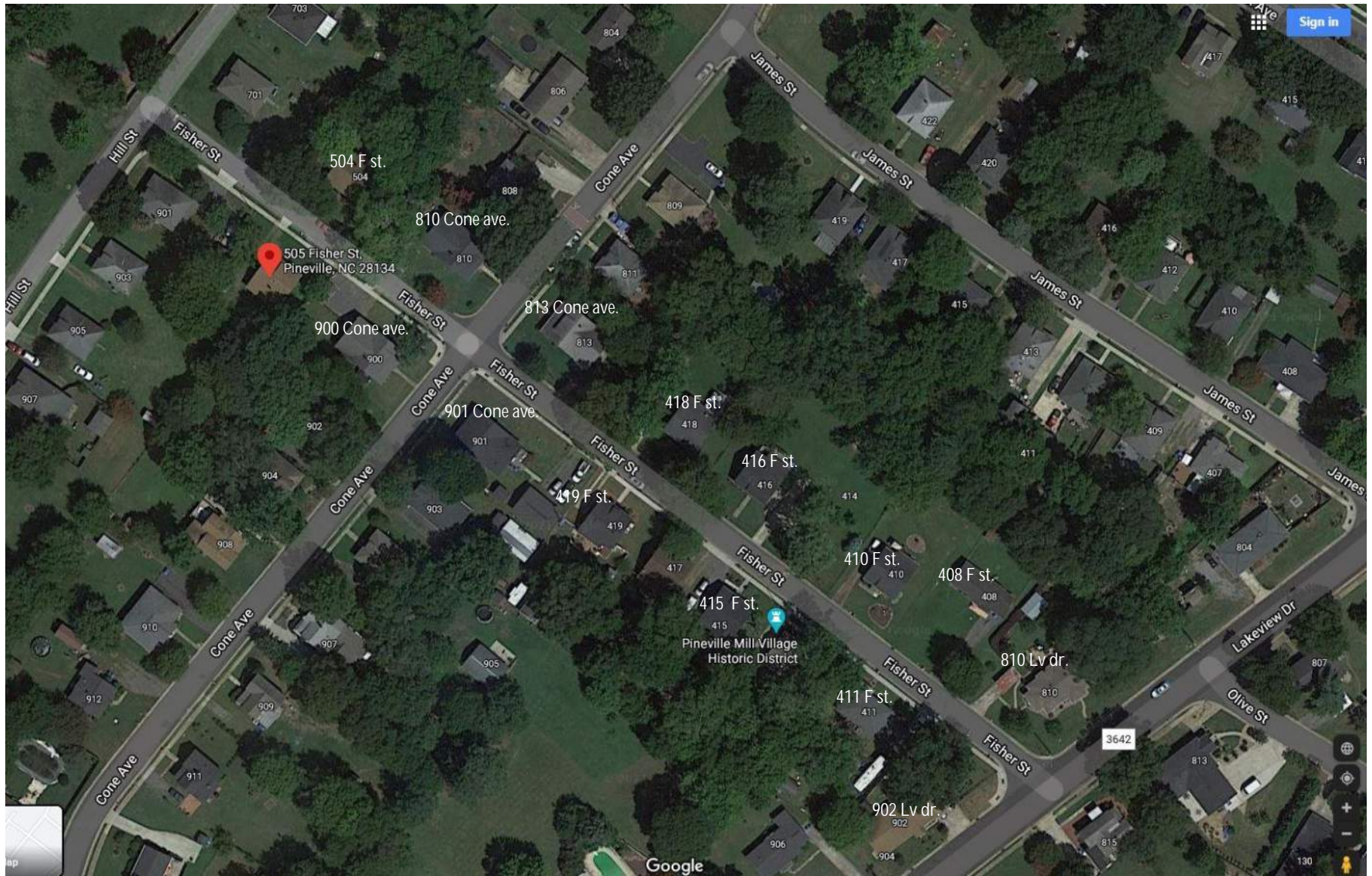
416 James st.



422 James st.



Fisher street Google map



505 Fisher st.



504 Fisher st.



810 Cone ave



900 Cone ave.



813 Cone ave.



901 Cone ave.



418 Fisher st.



419 Fisher st.



410 Fisher st.



415 Fisher st.



416 Fisher st.



417 Fisher st.



414 Fisher st./ not existing
building

413 Fisher st.



410 Fisher st.



408 Fisher st.



411 Fisher st.



810 Lakeview dr.



902 Lakeview dr.



Hill street Google map



703 Hill st.



701 Hill st.



901 Hill st.



903 Hill st.



905 Hill st.



907 Hill st.



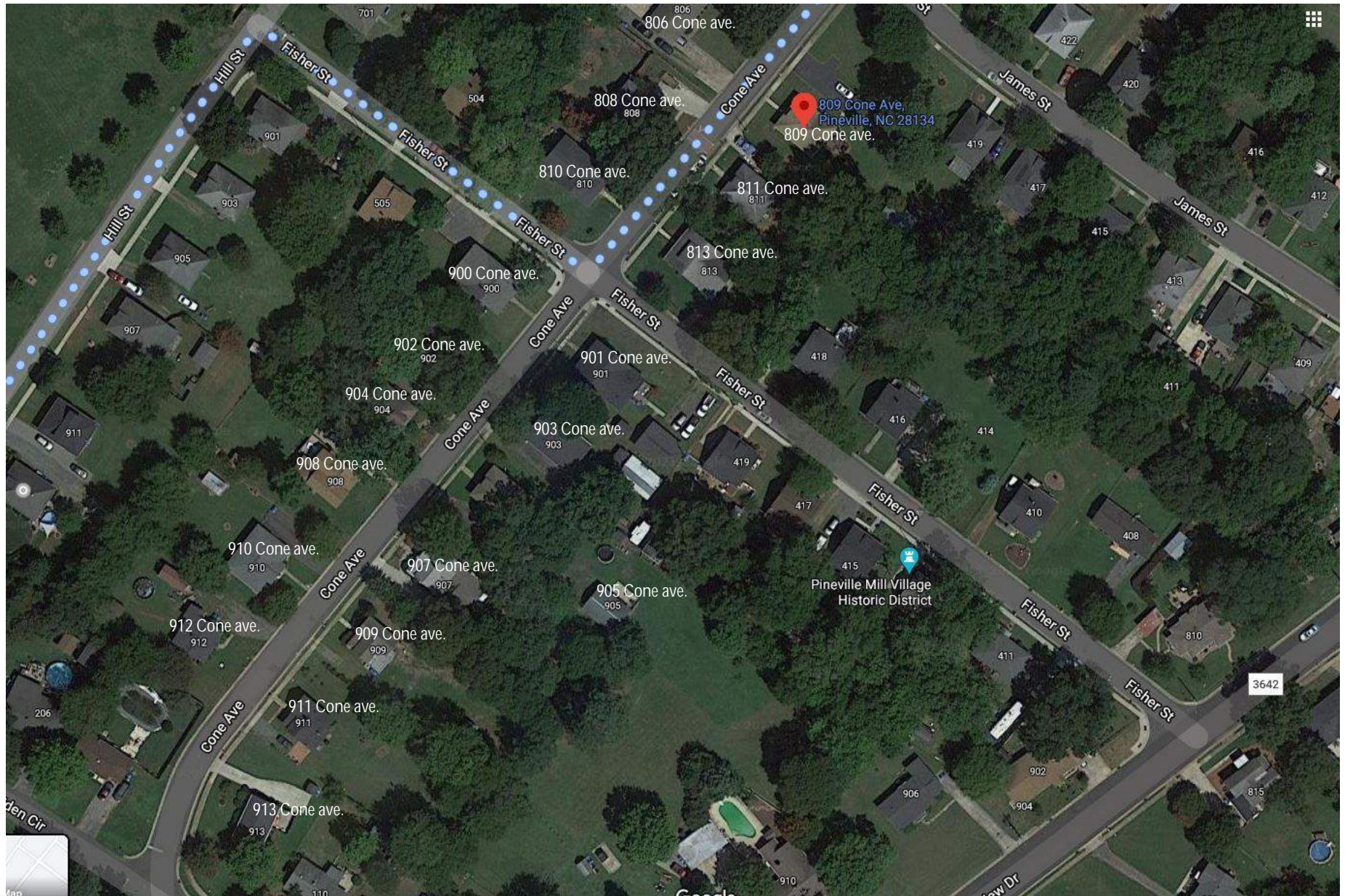
911 Hill st.



913 Hill st.



Cone ave- Part 2



806 Cone ave.



804 Cone ave



808 Cone ave



810 Cone ave



900 Cone ave



809 Cone ave



811 Cone ave



813 Cone ave



901 Cone ave



903 Cone ave



905 Cone ave



907 Cone ave



911 Cone ave



913 Cone ave



Eden Circle.

James street



104 Eden Cir.



106 Eden Cir.



108 Eden Cir.



106 Eden Cir.



206 Eden Cir.



208 Eden Cir.



210 Eden Cir.

