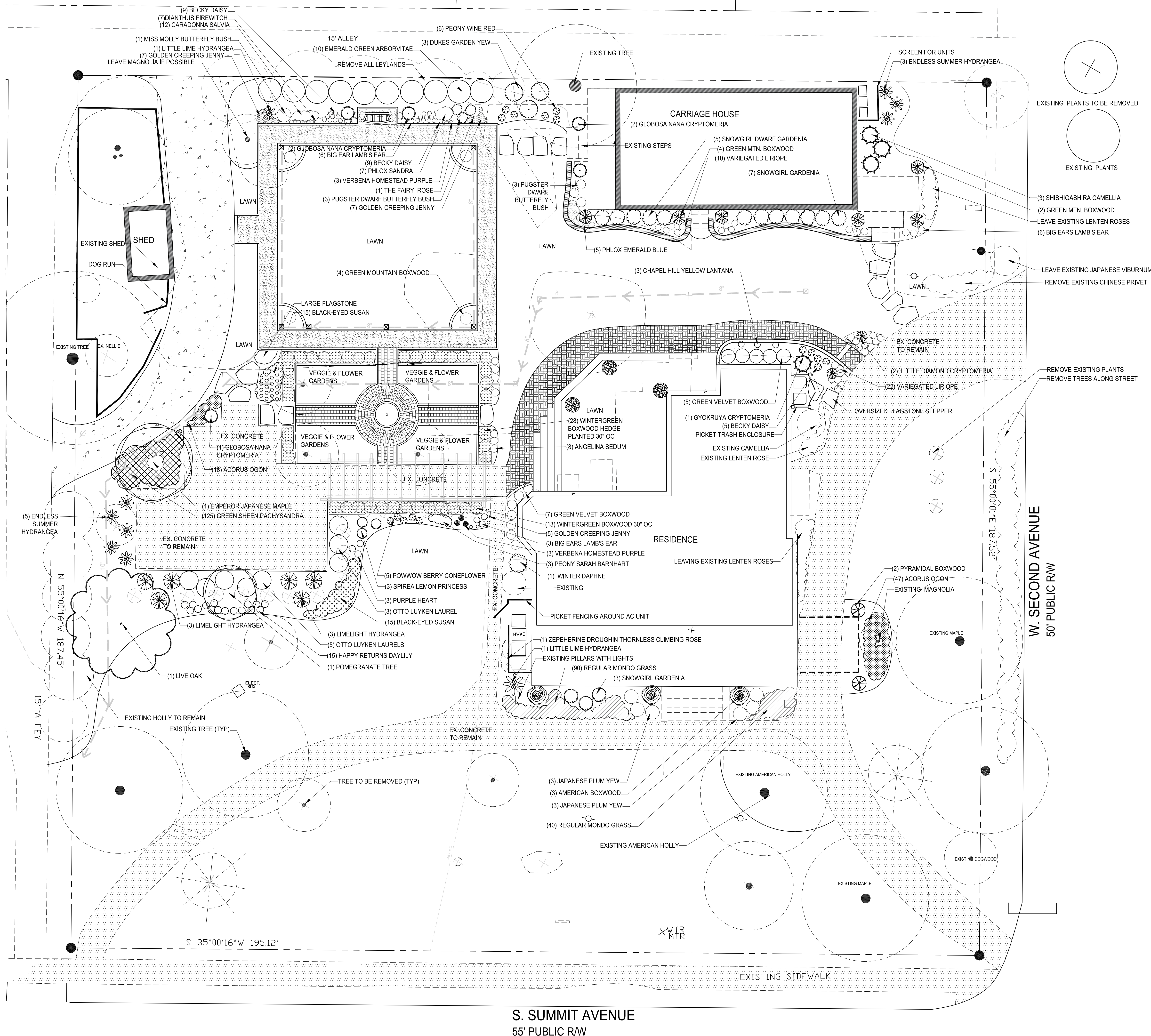


The Miller Residence



SHRUB BED SPECIFICATION:

- | | |
|---|--|
| 1) LAYOUT BEDS AND ERADICATE ANY EXISTING VEGETATION.
2) TILL ALL PROPOSED BEDS TO A DEPTH OF 8".
3) SPREAD A 3/4" LAYER OF PLANTING MIX ON TOP OF THE BED. TILL IN PLANTING MIX TO A DEPTH OF 6".
4) FINE GRADE BEDS TO DRAIN. REMOVE ANY ROCKS, CLODS, OR DEBRIS FROM THE BED THAT ARE GREATER THAN 1" IN DIAMETER.
5) ALL PLANTING BEDS SHALL HAVE A 4" V-CUT TRENCH, STEEL EDGING, OR BRICK SLOPED COURSE AT THE PERIMETER OF THE PLANTING BEDS AS SPECIFIED ON THE PLANTING PLAN.
6) SET PLANT MATERIAL 2-3" ABOVE THE FINISHED GRADE. BACKFILL AROUND PLANT ROOT BALL WITH AMENDED SOIL. NO FILLING SHALL BE DONE AROUND ACTUAL TRUNKS OR STEMS OF PLANT MATERIAL. FIRM DOWN BACKFILL TO ELIMINATE ALL AIR POCKETS. FORM 2" HIGH COLLAR AROUND OUTER PERIPHERY OF DRIP ZONE OF INDIVIDUAL PLANTS WITHIN PLANTING BEDS WHICH ARE NOT MULCHED.
7) THOROUGHLY WATER IN ALL PLANT MATERIAL IMMEDIATELY AFTER INSTALLATION.
8) MULCH ENTIRE BED AREA WITH A 2" LAYER OF DOUBLE-HAMMERED, SHREDDED HARDWOOD MULCH. | ANNUAL & PERENNIAL BED SPECIFICATION:
1) LAYOUT BEDS & ERADICATE ANY EXISTING VEGETATION.
2) TILL EXISTING SOIL TO A DEPTH OF 8" MINIMUM.
3) SPREAD A 4-6" LAYER OF PLANTING MIX ON TOP OF THE BED. TILL IN PLANTING MIX TO A DEPTH OF 6".
4) FINE GRADE BED TO DRAIN. REMOVE ANY ROCK, CLODS, OR DEBRIS FROM THE BED THAT ARE GREATER THAN 1" IN DIAMETER.
5) ALL PLANTING BEDS SHALL HAVE A 4" V-CUT TRENCH AT THE PERIMETER OF THE PLANTING BEDS AS SPECIFIED ON THE PLAN.
6) SET PLANT MATERIAL 2" ABOVE THE FINISHED GRADE. BACKFILL AROUND PLANT ROOT BALL WITH AMENDED SOIL. NO FILLING SHALL BE DONE AROUND ACTUAL TRUNK OR STEMS OF PLANT MATERIAL. FIRM BACKFILL TO ELIMINATE ALL AIR POCKETS.
7) THOROUGHLY WATER IN ALL PLANT MATERIAL IMMEDIATELY AFTER INSTALLATION.
8) MULCH ENTIRE BED AREA WITH A 2" LAYER OF DOUBLE-HAMMERED, SHREDDED HARDWOOD MULCH. |
|---|--|

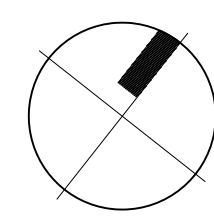
Plant List

QNTY	BOTANICAL NAME	COMMON NAME	COND.	SIZE	COMMENTS
Trees:					
10	Thuja occidentalis 'Emerald Green'	Emerald Green Arborvitae	B&B	6-7'	
1	Punica granatum	Pomegranate Tree		7-9'	
1	Acer palmatum 'Emperor I'	Emperor Japanese Maple	B&B	7-8'	
Shrubs:					
1	Euddelea x 'Miss Molly'	Miss Molly Butterfly Bush	3 gal.		
6	Euddelea x 'Pugster Blue'	Pugster Blue Butterfly Bush	3 gal.		
11	Euxus microphylla 'Green Velvet'	Green Velvet Japanese Boxwood	7 gal.		
41	Euxus microphylla japonica 'Green Beauty'	Green Beauty Japanese Boxwood	7 gal.		
3	Euxus sempervirens 'Arborescens'	American Boxwood	B&B	36x36"	
2	Euxus sempervirens 'Fastigiata'	Fastigiate Boxwood	B&B	4-5'	
15	Euxus x 'Green Mountain'	Green Mountain Boxwood	B&B	2-3'	
3	Camellia hiemalis 'Shishigashira'	Shishigashira Camellia	10 gal.		
4	Cephalotaxis harringtonia 'Duke Gardens'	Duke Gardens Plum Yew	7 gal.		
6	Cephalotaxis harringtonia 'Prostrata'	Japanese Plum Yew	3 gal.		
5	Cryptomeria japonica 'Globosa Nana'	Dwarf Globosa Cryptomeria	7 gal.		
1	Cryptomeria japonica 'Gyokuyua'	Gyokuyua Cryptomeria	10 gal.		
3	Cryptomeria japonica 'Little Diamond'	Little Diamond Cryptomeria	7 gal.		
2	Cryptomeria japonica 'Little Diamond'	Little Diamond Cryptomeria	7 gal.		
1	Daphne odora 'Albo-marginata'	Winter Daphne	7 gal.		
15	Gardenia 'Snow Girl' TM 'CP14ER789' PP# PPAF	Snow Girl Gardenia	3 gal.		
3	Hydrangea macrophylla 'Bailmer' PP# 15,298	Endless Summer Hydrangea	5 gal.		
3	Hydrangea paniculata 'Jane'	Little Lime Hydrangea	7 gal.		
2	Hydrangea paniculata 'Limelight' PP#12,874	Limelight Hydrangea Standard Treeform	15 gal.		
6	Hydrangea paniculata 'Limelight' PP#12,874	Limelight Hydrangea	3 gal.		
1	Prunus laurocerasus 'Otto Luyken'	Otto Luyken Laurel	BB	36 x 36"	
8	Rosa 'The Fairy'	The Fairy Rose	3 gal.		
1	Rosa 'Zepherine Droughin'	Thornless Climbing Pink Rose	3 gal.		
3	Spiraea japonica 'Lemon Princess'	Lemon Princess Spirea	5 gal.		
Groundcovers, Perennials, Bulbs:					
65	Acorus gramineus 'Gcon'	Golden Sweetflag	1 gal.		
7	Dianthus x 'Fire Witch'	Fire Witch Dianthus	1 gal.		
5	Echinacea 'PowWow Berry'	Pow Wow Berry Coneflower	1 gal.		
15	Hemerocallis 'Happy Returns'	Happy Returns Daylily	1 gal.		
3	Lantana 'Chape Hill Yellow'	Chapel Hill Yellow Perennial Lantana	1 gal.		
23	Leucanthemum x superbum 'Becky'	Becky Daisy	1 gal.		
32	Liriope muscari 'Variegata'	Variegated Monkey Grass	1 gal.		
19	Lysimachia nummularia 'Aurea'	Golden Creeping Jenny	1 gal.		
3	Paeonia lactiflora 'Sarah Bernhardt'	Sarah Bernhardt Paeonia (D RosePink)	1 gal.		
125	Pachysandra terminalis 'Green Sheen'	Green Sheen Pachysandra	4" pots		
7	Phlox paniculata 'Sandra'	Sandra Garden Phlox(hot pink)	1 gal.		
5	Phlox subulata 'Emerald Cushion Blue'	Emerald Cushion Blue Creeping Phlox	1 gal.		
30	Rudbeckia fulgida 'Goldsturm'	Black-Eyed Susan	1 gal.		
12	Salvia nemerosa 'Caradonna'	Caradonna Salvia	1 gal.		
8	Sedum repesre 'Angelina'	Angelina Sedum	1 gal.		
3	Setcreasea 'Purple Heart'	Purple Heart Setcreasea	1 gal.		
9	Stachys byzantina 'Helen Von Stein'	Lamb's Ear-Big Ears	1 gal.		
6	Verbena x 'Homestead Purple'	Homestead Purple Verbena	1 gal.		

Please contact landscape designer to approve any substitutions. Double check quantities on plant list with plan- this plant list is provided for convenience only.

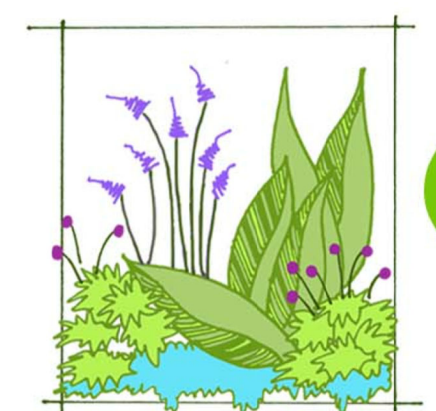
MASTER PLANTING PLAN

SHEET 01 OF 03



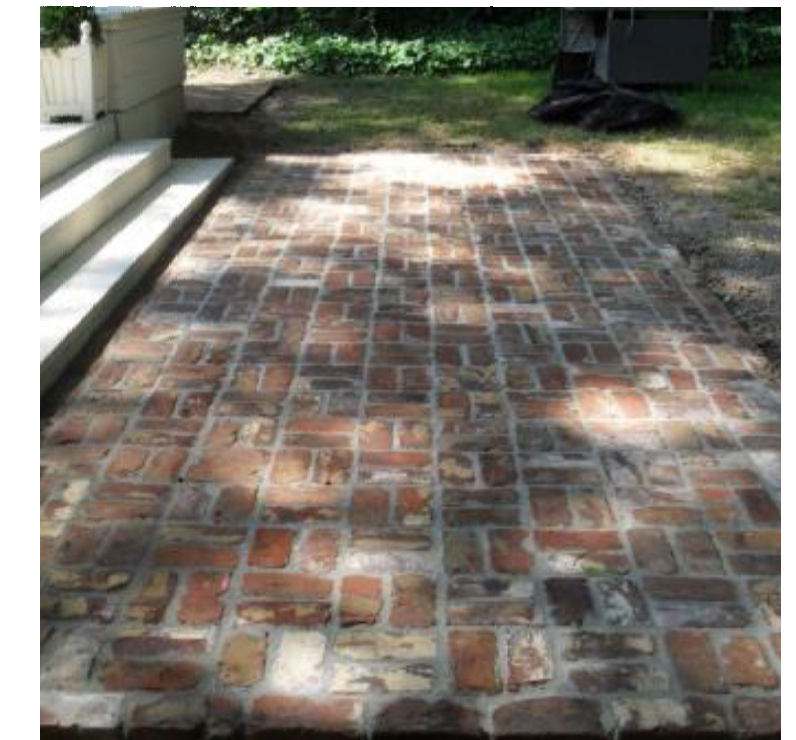
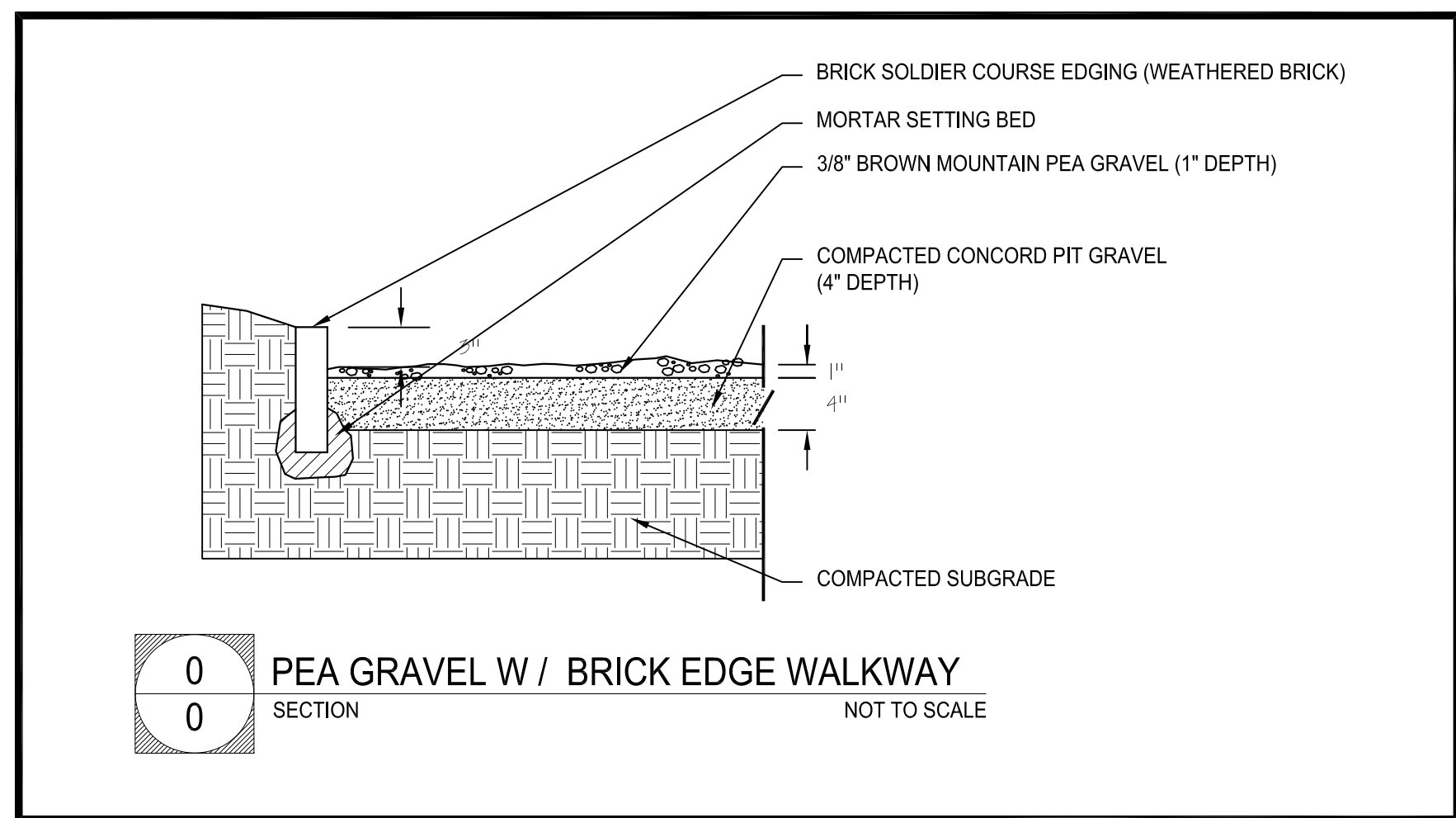
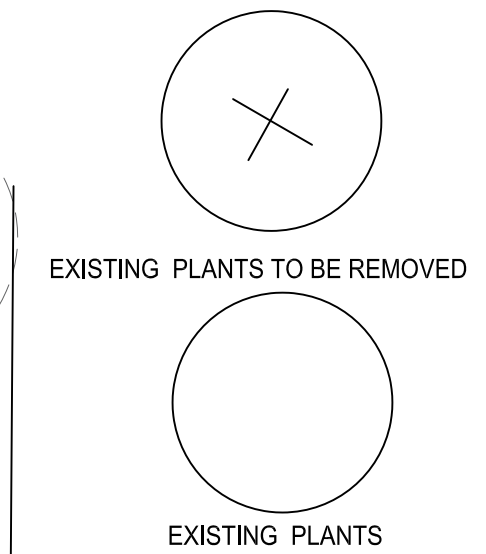
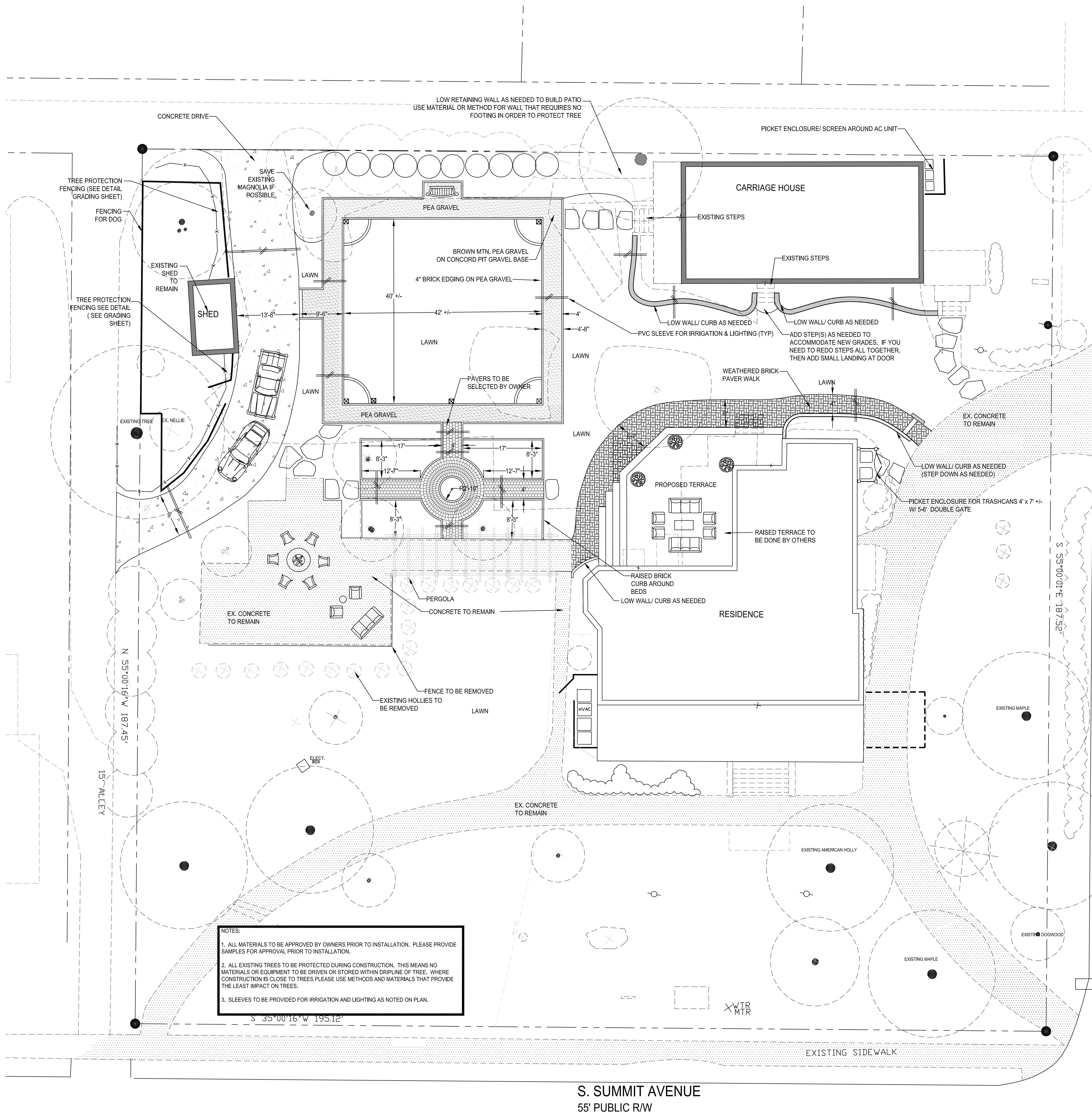
0' 10' 20'

SCALE: 1.0" = 10'-0"



Garden
design
916 forestbrook drive
gastonia, nc 28056 704.718.4785

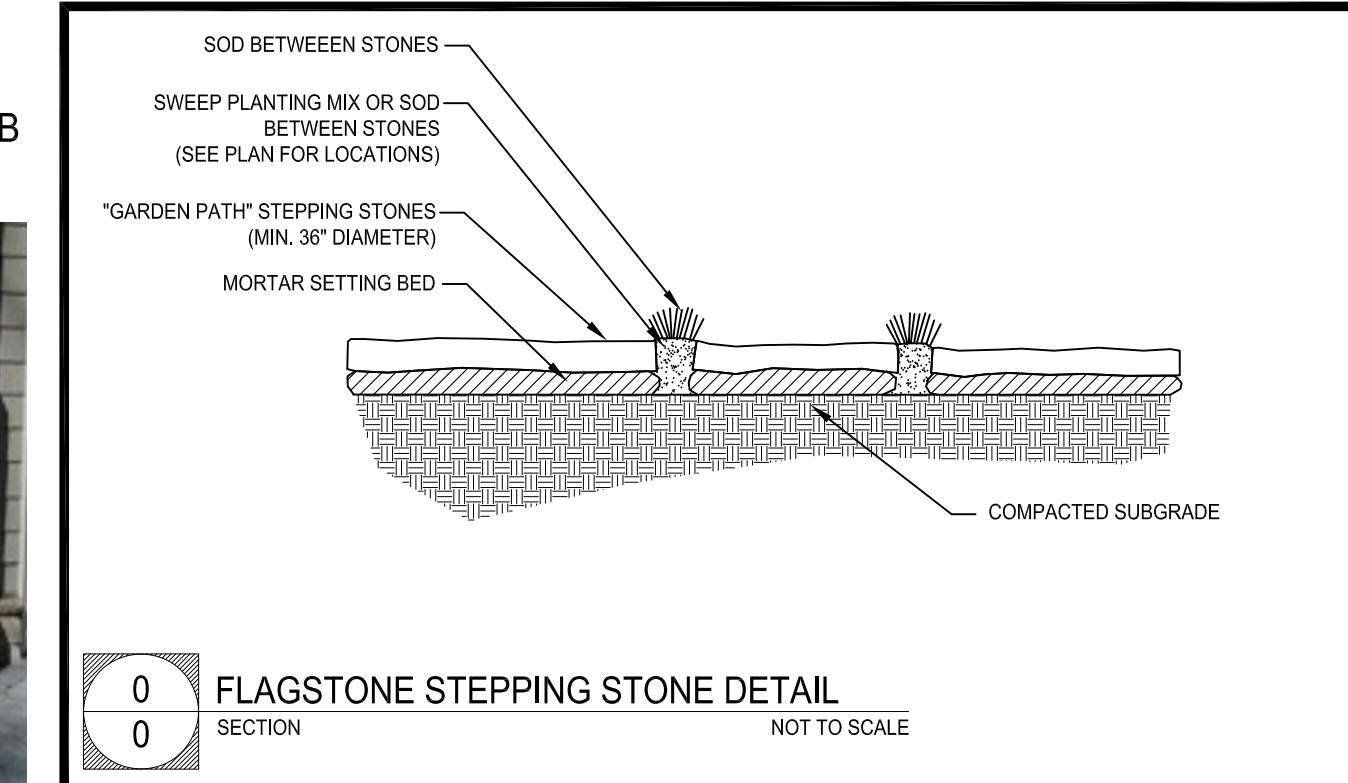
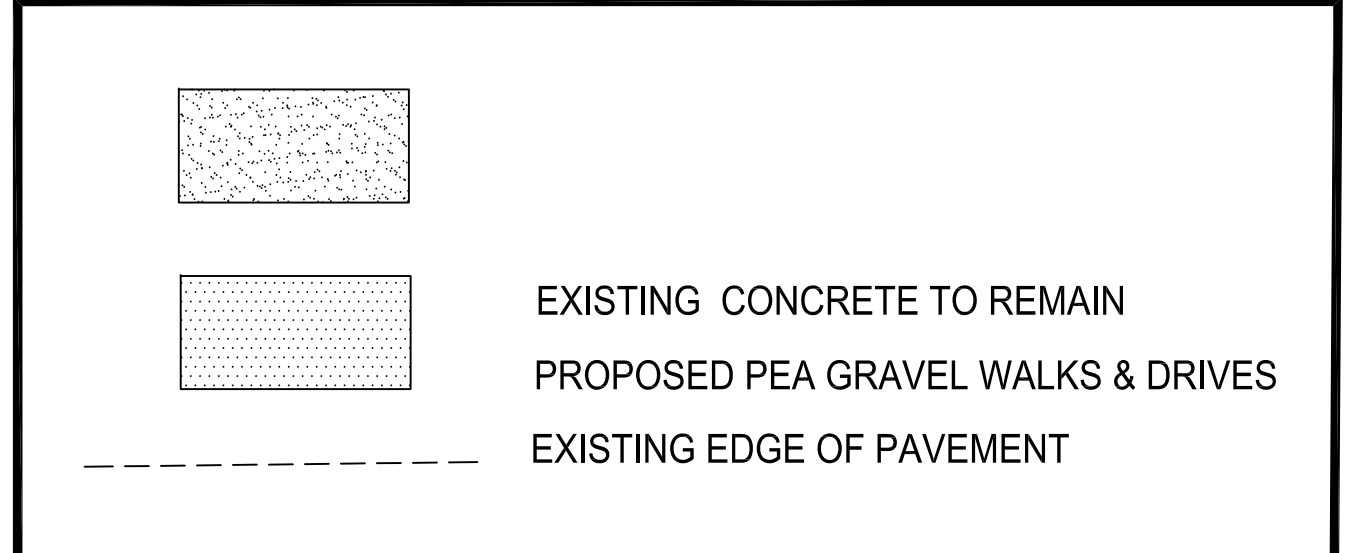
The Miller Residence



WEATHERED BRICK WALK ON CONCRETE SLAB (BASKETWEAVE PATTERN)



PICKET ENCLOSURE FOR AC UNITS & TRASH CANS



W. SECOND AVENUE
50' PUBLIC R/W



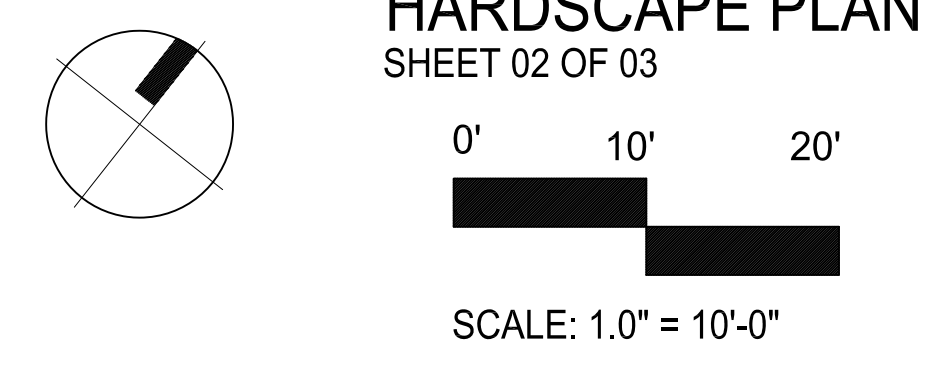
BLACK ALUMINUM FENCING FOR DOG LOT



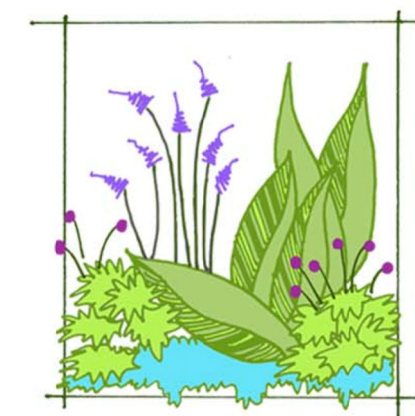
LOW WALL W/ ROWLOCK/ OR LOW CURB



BRICK EDGING/ PEA GRAVEL WALKWAY FOR LAWN SQUARE & VEGETABLE GARDEN



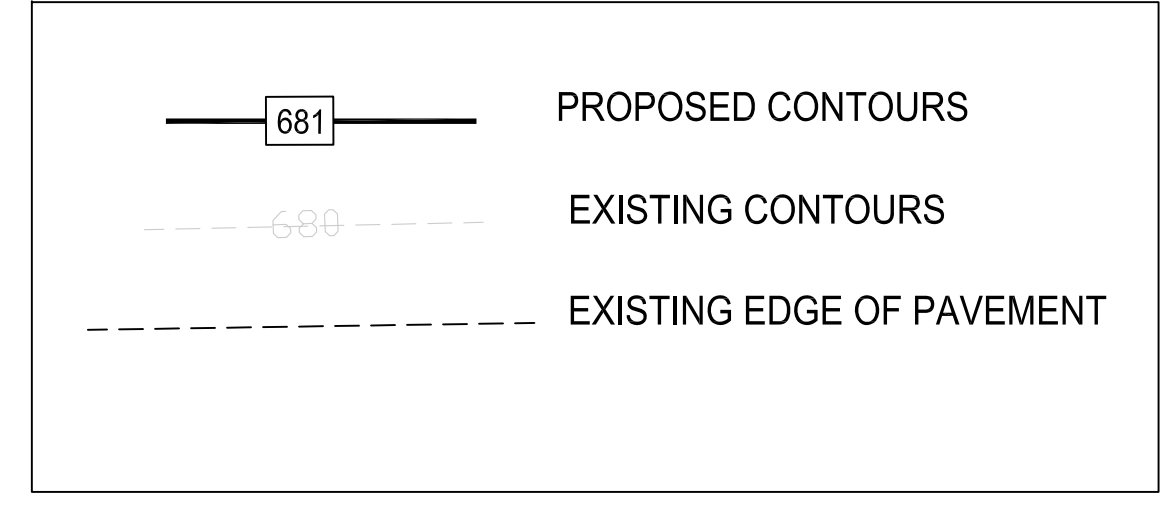
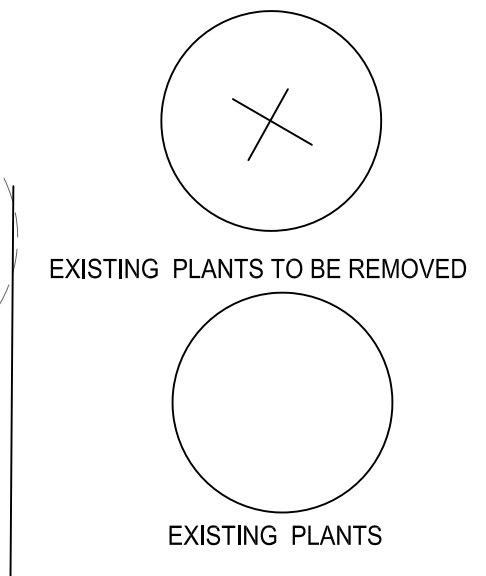
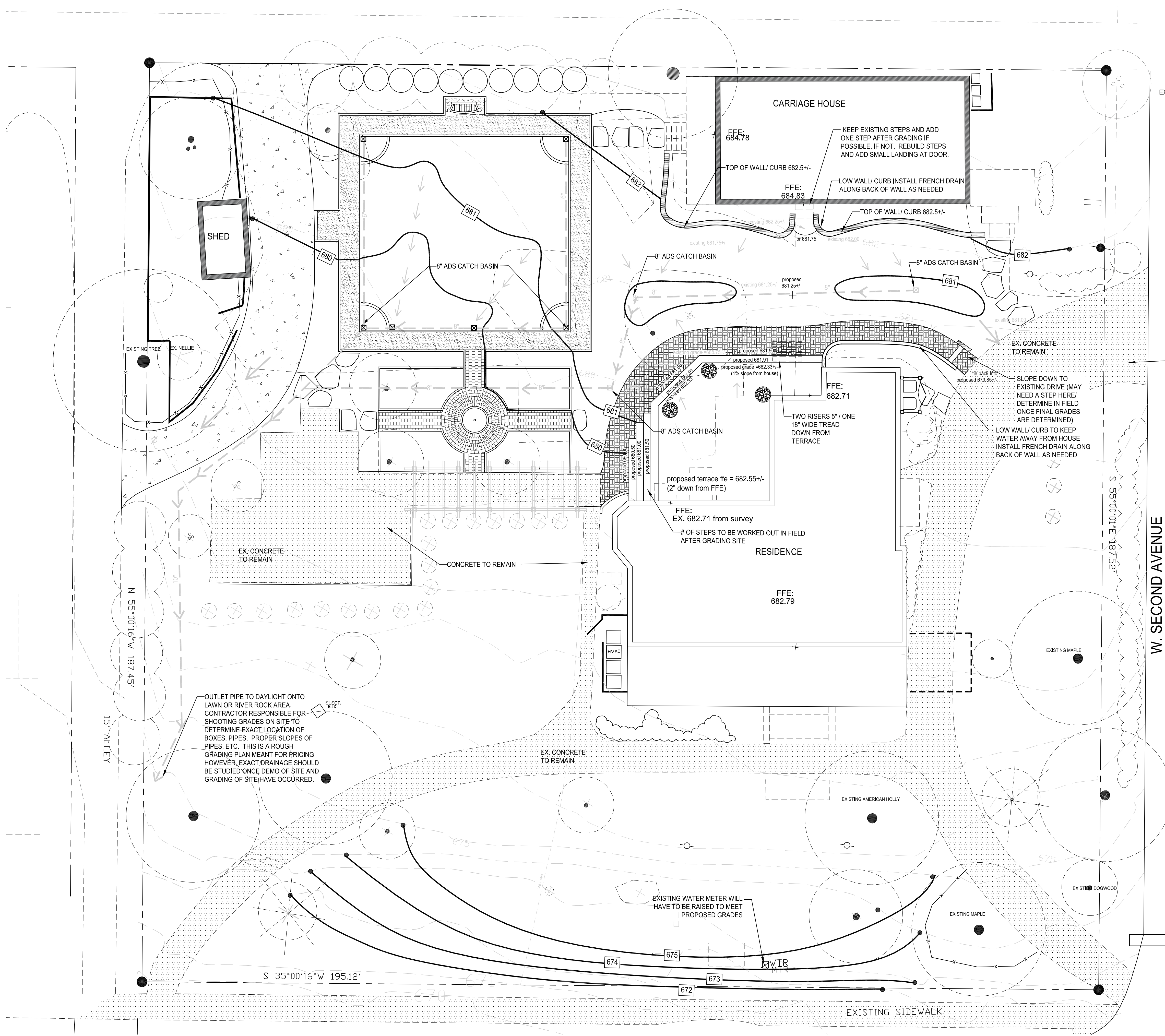
- NOTES:
1. ALL MATERIALS TO BE APPROVED BY OWNERS PRIOR TO INSTALLATION. PLEASE PROVIDE SAMPLES FOR APPROVAL PRIOR TO INSTALLATION.
 2. ALL EXISTING TREES TO BE PROTECTED DURING CONSTRUCTION. THIS MEANS NO MATERIALS OR EQUIPMENT TO BE DRIVEN OR STORED WITHIN DRIPLINE OF TREE. WHERE CONSTRUCTION IS CLOSE TO TREES PLEASE USE METHODS AND MATERIALS THAT PROVIDE THE LEAST IMPACT ON TREES.
 3. SLEEVES TO BE PROVIDED FOR IRRIGATION AND LIGHTING AS NOTED ON PLAN.



Garden design
916 forestbrook drive
gastonia, nc 28056 704.718.4785

S. SUMMIT AVENUE
55' PUBLIC R/W

The Miller Residence



- GENERAL NOTES:
- 1) ALL PIPE TO BE ADS N-12 PIPE OR PVC.
 - 2) ALL PIPE TO HAVE MINIMUM SLOPE OF 1%.
 - 3) ALL PIPE TO BE INSTALLED ON 6" BED OF WASHED GRAVEL.
 - 4) FLEXIBLE CORRUGATED PIPE WILL NOT BE ACCEPTED.
 - 5) GENERAL CONTRACTOR IS RESPONSIBLE FOR COORDINATING INSTALLATION OF DRAINAGE PIPES AND ASSOCIATED PIPE SLEEVES PRIOR TO CONSTRUCTION OF FOUNDATIONS, WALL FOOTINGS, ETC.
 - 6) GENERAL CONTRACTOR IS RESPONSIBLE FOR COORDINATING INSTALLATION OF ELECTRICAL/GAS LINES AND ASSOCIATED PIPE SLEEVES/CONDUIT PRIOR TO CONSTRUCTION OF FOUNDATIONS, WALL FOOTINGS, ETC.
 - 7) GENERAL CONTRACTOR IS RESPONSIBLE FOR LOCATING ALL DOWNSPOUTS IN THE FIELD AND TYING EACH INTO PROPOSED DRAINAGE SYSTEM. (NOTE: NOT ALL DOWN SPOUTS MAY BE NOTED ON PLANS).
 - 8) DRAIN ALL CATCH BASINS AND DRAIN INLETS TO OUTLET TO DAYLIGHT.
 - 9) EXISTING PLANT MATERIAL TO BE PRESERVED UNLESS SHOWN ON PLANTING PLAN TO BE REMOVED.
 - 10) ALL CATCH BASINS TO BE AS SPECIFIED (SEE CATCH BASIN SCHEDULE).
 - 11) ALL CATCH BASINS TO BE NDS #900 (9" x 9" CATCH BASIN) WITH NDS GRATE #980 (9" SQUARE BLACK GRATE OR GREEN GRATE IF IN LAWN).

SEE APPROVED TREE PRESERVATION PLAN FOR REQUIRED RADIUS OF TREE BARRIER

PLAN VIEW OF ROOT ZONE

FOR PRUNING SEE INTERNATIONAL SOCIETY OF ARBORICULTURE SPECS.

TREE LIMB REMOVAL

NOTES:

1. REMOVE ALL BARRIERS UPON COMPLETION OF PROJECT.
2. LANDSCAPING PLANS SHALL SHOW THE LOCATIONS OF ALL TREE PROTECTION FENCES.
3. REFER TO CITY OF CHARLOTTE LANDSCAPE CONSTRUCTION STANDARDS SECTION 01000 FOR GENERAL SPECIFICATION REGARDING TREE PROTECTION.

ONE FOOT FOR EACH INCH OF TRUNK DIAMETER OR 1/2 HEIGHT OF TREE WHICHEVER IS GREATER

6" MINIMUM WIDTH OF MULCH

6" BARK MULCH, PLACE BARK MULCH AT AREAS NOT PROTECTED BY BARRIER.

APPROVED DATE: 02/2007

MECKLENBURG COUNTY LAND DEVELOPMENT STANDARDS

TREE PROTECTION

SHEET NO.	REV.
40.02	

ROUGH GRADING PLAN
SHEET 03 OF 03

SCALE: 1.0" = 10'-0"