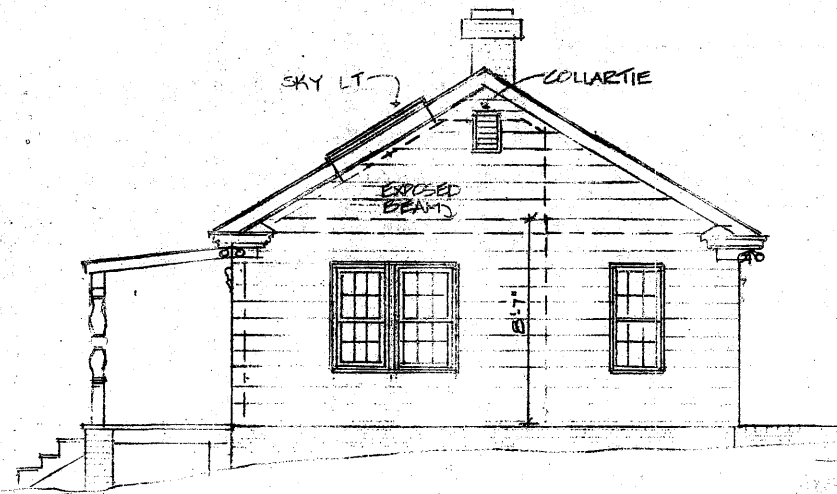
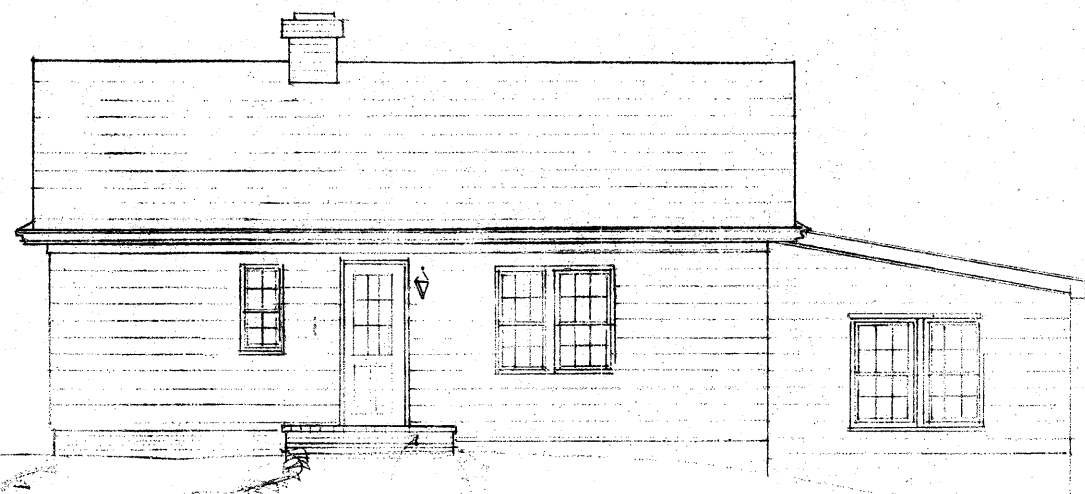


FRONT ELEVATION
1/4" = 1'-0"



FRONT SIDE ELEVATION
1/4" = 1'-0"

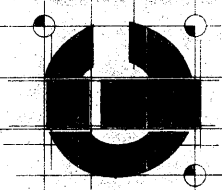


REAR ELEVATION
1/4" = 1'-0"

* EXISTING DOORS & WINDOWS TO REMAIN

PROJECT RESIDENTIAL
 2401 SHARON WALK (2727)
 CHARLOTTE, NC

JEANINE C. DEVANEY ASID
 ARCHITECT
 CHARLOTTE ENVIRONMENTS, INC.
 (704) 554-1023



DESIGNED BY JCD	DATE 12/17	SCALE 1/4" = 1'-0"
--------------------	---------------	-----------------------

REVISION 1/19/19 V1/19

CHANGES TO STUDIOS
 All dimensions to be verified by general contractor and sub-contractors prior to construction, fabrication, and installation.

SHEET
 9
 OF
 PROJECT 12/17/19