

# McNinch Estate

and Cottages







### **About Terranova**

Since 2011, The Terranova Group has been creating and revitalizing neighborhoods through residential development and construction. Lifestyle driven; Terranova communities embrace breathing room. Offering innovative floor plans, quality interior and exterior finishes, and inviting streetscapes that encourage a community focused atmosphere.

The Terranova Group carefully crafts homes to fit the lifestyles of a variety of individuals. From active adult living to urban revitalization for young professionals, Terranova builds brick by brick with the buyer in mind.

### **About Frank R. McNinch House**

Thoughtful architecture, quality construction and its unmatched location are the unique driving forces behind the quaint enclave residences of McNinch House.

Designed under the vigilant eye of Preserve Mecklenburg, the intimate but grand development will blend the revitalization and preservation of the McNinch House with eight estate homesites. The McNinch House will be surrounded by elegant landscaping placing in a preservation easement that will assure its preservation in perpetuity.

Located just a short drive from the bustling city of Charlotte, the McNinch House will complement its one-of-a-kind historical splendor of the surrounding neighborhood crafting modern touches that provide a new look on the colonial traditional exterior elements and eminence interior specifications while preserving the history of the 100 year old home.

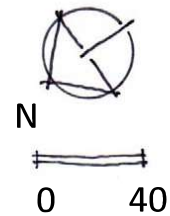




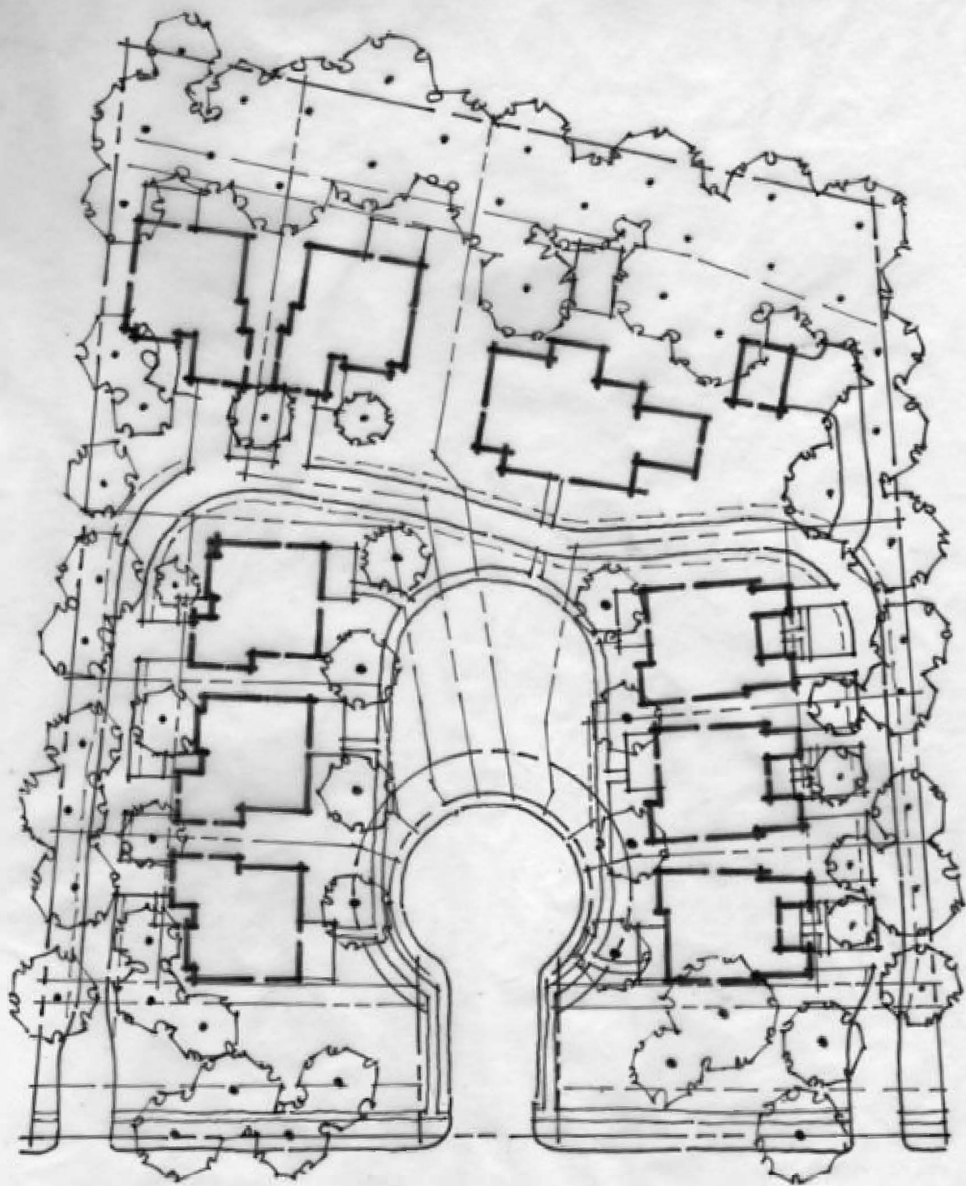
# **MCNINCH ESTATE & COTTAGES**

## **PRELIMINARY PLAN**

9 October 2020









## Development Cottages – Schematic Exterior Elevation

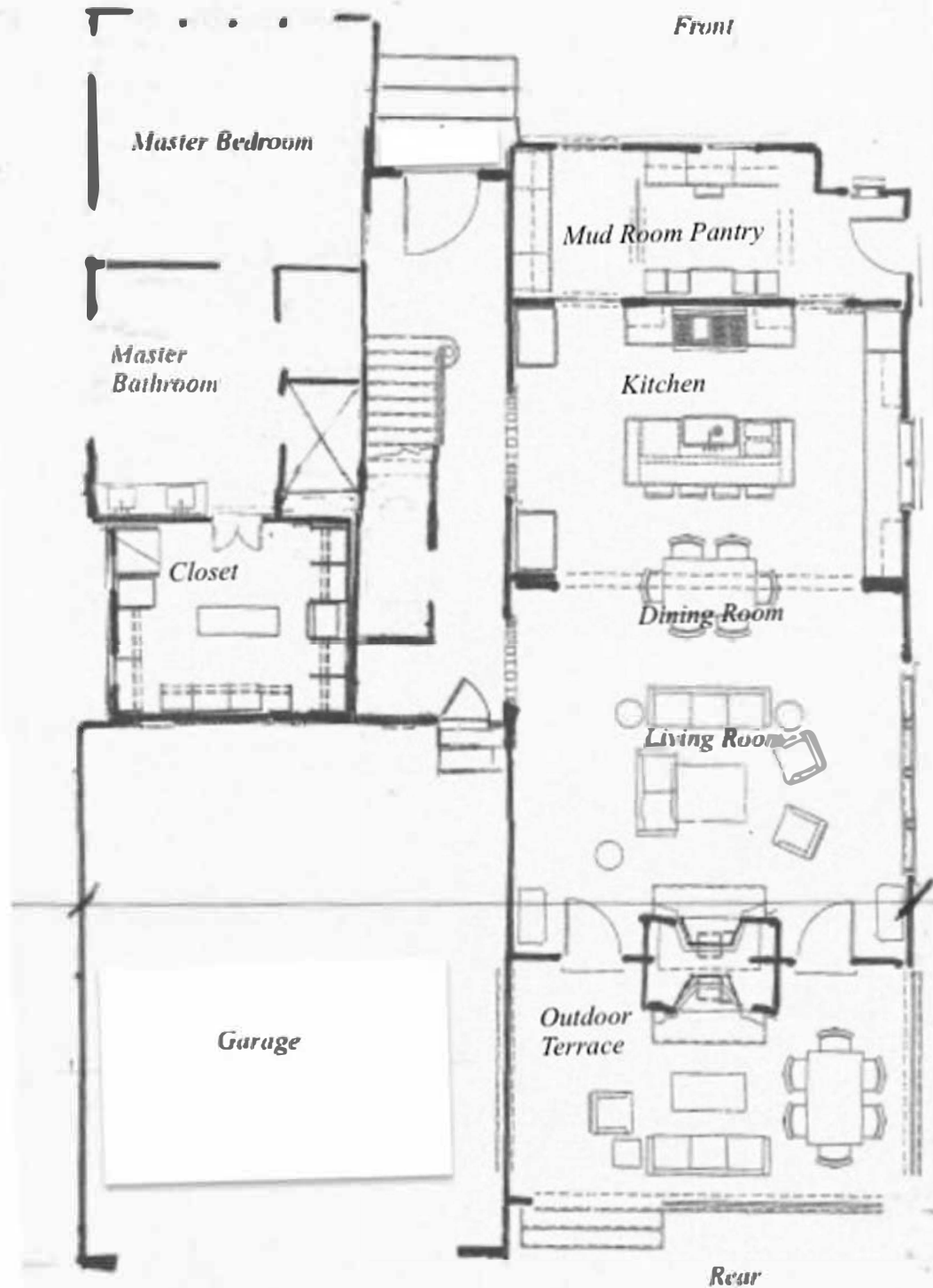
*The McNinch Estate to feature eight newly constructed luxury cottages*



*\*\* The photo depicts the general architectural style and finish but does not relate directly to the elevation and floorplan.*



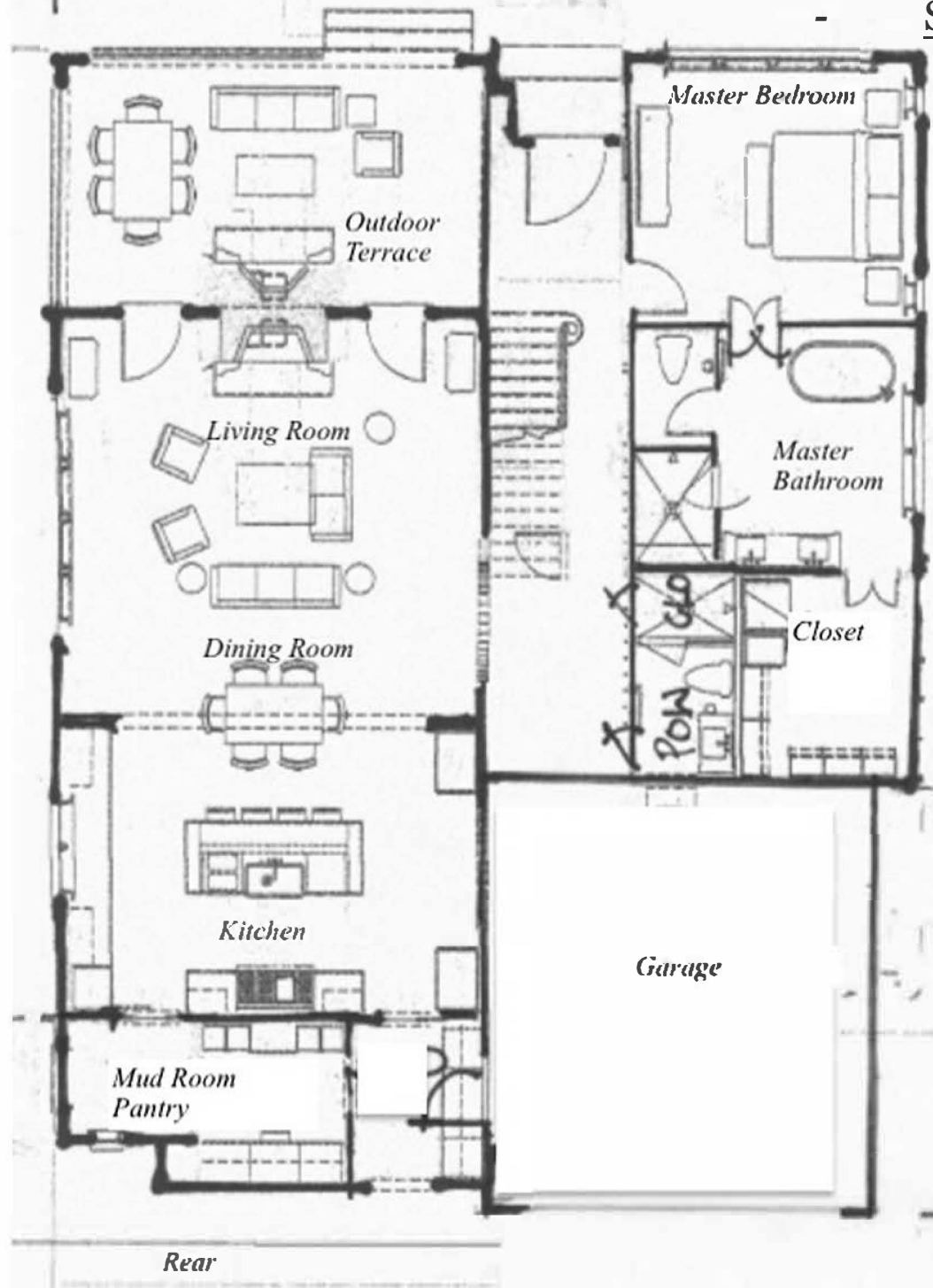
The McNinch Estate  
Sharon Lane Residences  
Plan-A





Front

The McNinch Estate  
Sharon Lane Residences  
Plan B



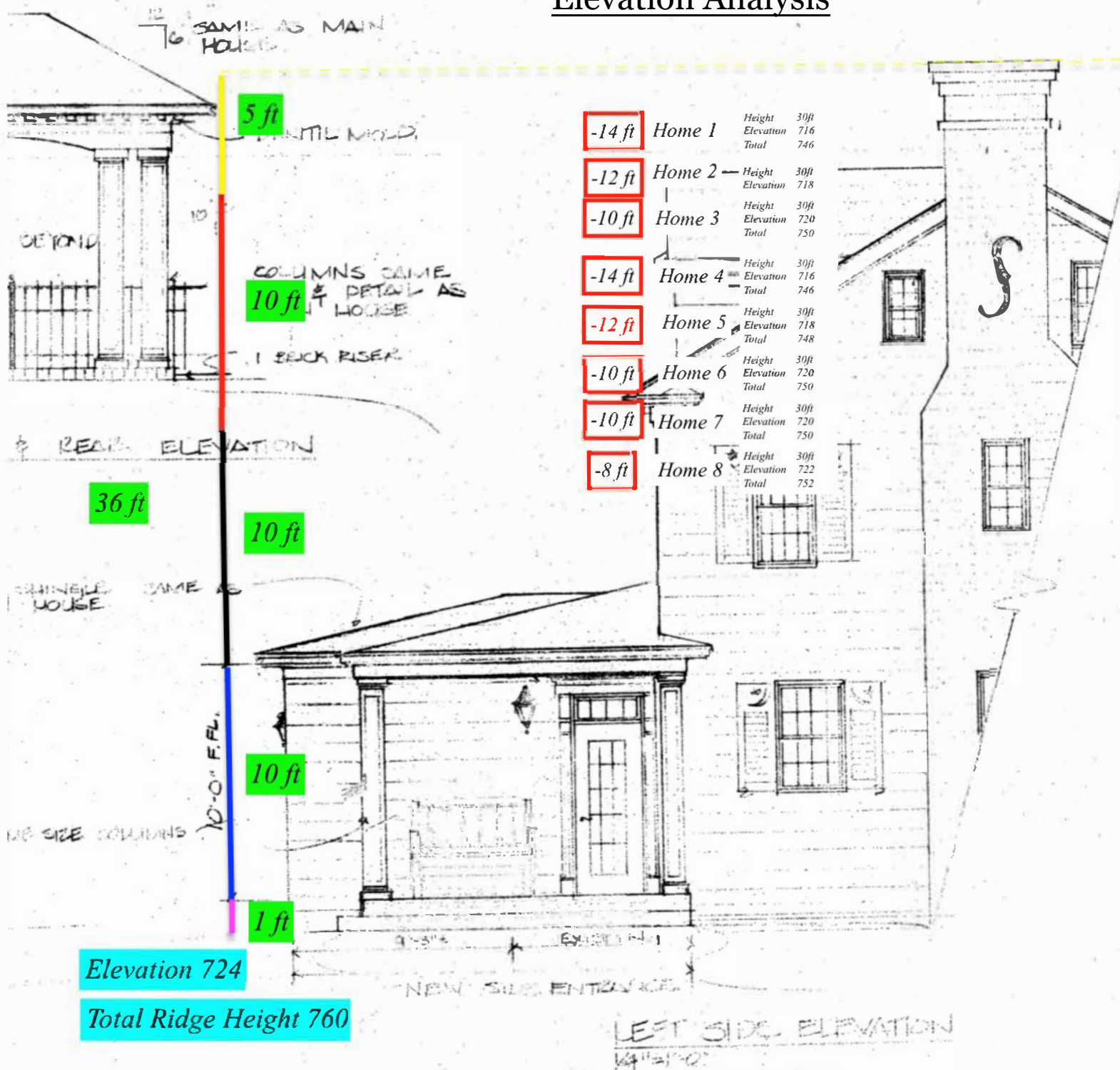


McNinch Estate - Sharon Lane Residences  
Plan A - Front Elevation





## Elevation Analysis



**JEANINE C. DeVANEY**  
ASIDE  
CHARLOTTE IN-VIRONMENTS, INC.  
(704) 554-1023



DESIGNED BY 20	DATE 12/77	SCALE 1/4" = 1'-0"
-------------------	---------------	-----------------------

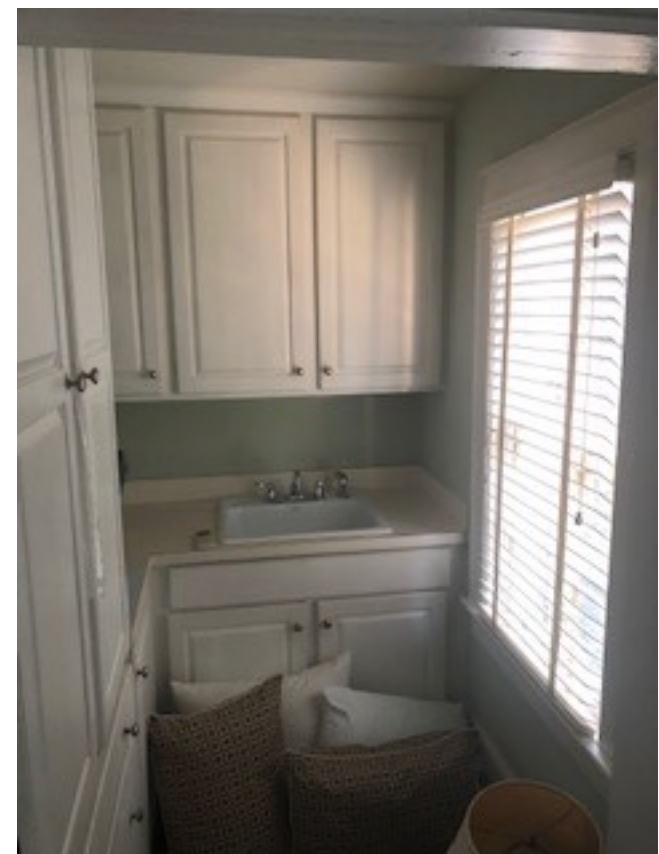
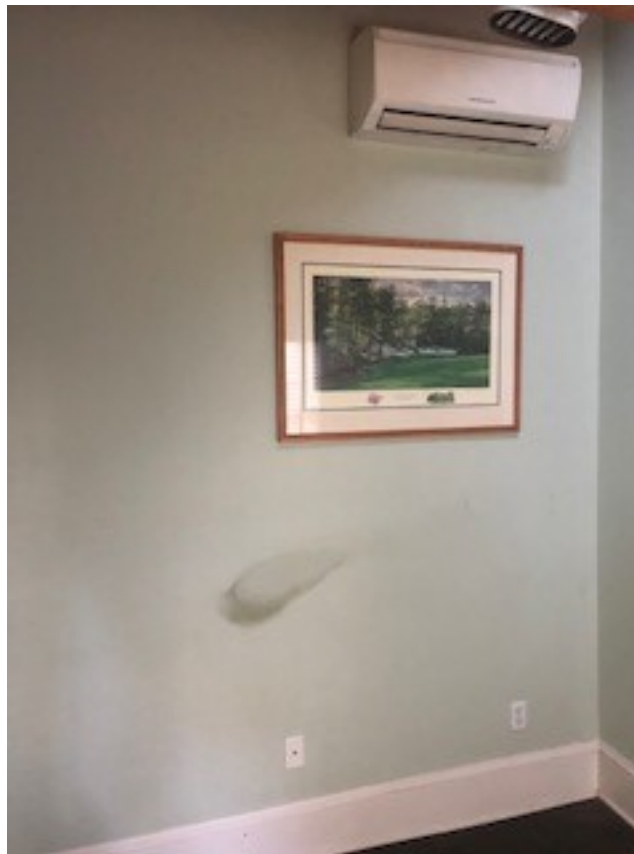
84411  
84411

All dimensions to be verified by general contractor and sub-contractors prior to construction, fabrication, and installation.



## Proposed Garage Demolition

As supportive evidence to the conceptual approval for the demolition of the existing garage, please see photos below of the current condition of the existing garage. It is our view the existing garage does not contribute to the historical significance of the McNinch House



*\*\*Interior images*





*\*\*Exterior Images*





*\*\*Exterior Images*