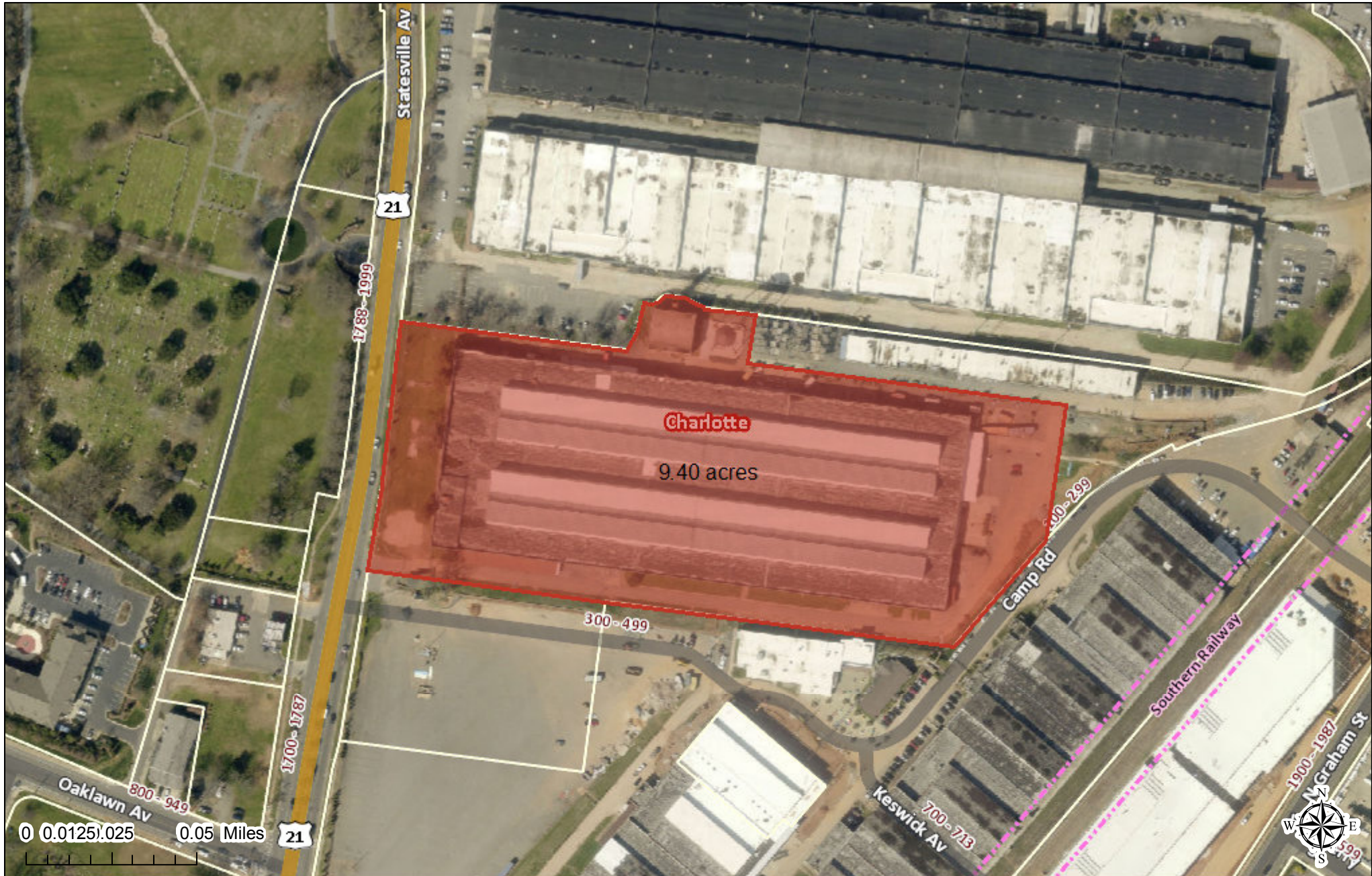


# Polaris 3G Map – Mecklenburg County, North Carolina

## EXHIBIT A

Date Printed: 8/20/2019 11:07:13 AM



This map or report is prepared for the inventory of real property within Mecklenburg County and is compiled from recorded deeds, plats, tax maps, surveys, planimetric maps, and other public records and data. Users of this map or report are hereby notified that the aforementioned public primary information sources should be consulted for verification. Mecklenburg County and its mapping contractors assume no legal responsibility for the information contained herein.





North Carolina Department of Natural and Cultural Resources  
State Historic Preservation Office

Ramona M. Bartos, Administrator

Governor Roy Cooper  
Secretary Susi H. Hamilton

Office of Archives and History  
Deputy Secretary Kevin Cherry

January 10, 2020

Stewart Gray  
Charlotte-Mecklenburg Historic Landmarks Commission  
2100 Randolph Rd.  
Charlotte, NC 28207-1522

RE: Proposed Designation of **Ford Motor Company Assembly Plant, Charlotte, Mecklenburg County.**

Dear Mr. Gray:

Thank you for submitting the report for **Ford Motor Company Assembly Plant, Charlotte, Mecklenburg County.** We have reviewed the information in the report and offer the following comments in accordance with North Carolina General Statute 160A-400.6.

According to the report, the Ford Motor Company Assembly Plant is a surviving example of the growth of industry in Charlotte in the early twentieth century, demonstrates the Ford Motor Company's expansion through the country, and is a surviving example of Albert Kahn's extensive work. The building is significant for its association with Albert Kahn and its association with industry in Charlotte. The proposed boundary encompasses 9.4 acres of land and includes the Assembly Plant building and the Boiler House.

We commend the commission for submitting a report that satisfies all the requirements outlined in the HPO's Guidelines and believe the data contained therein provides the local governing board with sufficient information to determine whether Ford Motor Company Assembly Plant possesses the requisite special local significance and integrity for local historic landmark designation.

Landmark designation means the community recognizes properties within the historic district are worthy of preservation because of their special significance to the local community. Any substantial changes in design, materials, and appearance to these properties is subject to the design review procedures of the preservation commission.

Thank you for the opportunity to comment on the report. Please note, our comments are advisory only and therefore, non-binding. Once the governing board has received a recommendation from the Charlotte-Mecklenburg Historic Landmarks Commission, it should proceed in the same manner as would otherwise be required for an amendment to the zoning ordinance. Once the decision has been made, please return a completed copy of the enclosed form to our office.

This letter serves as our comments on the proposed designation of Ford Motor Company Assembly Plant, Charlotte, Mecklenburg County. Please contact me at 919-814-6583 should you have any questions about our comments.

Sincerely,



Ramona M. Bartos, Deputy  
State Historic Preservation Officer

CC: Commission Chair

Enclosure