



CARMEL PARK HOUSE (1150)

4910 Carmel Park Drive

Ca. 1950 house

May be the last modernist house
left in Carmel Park neighborhood

Currently for sale as a potential
teardown

CARMEL PARK HOUSE (1150)



From zillow.com



CHARLES LYMAN AND JEAN WEBER BATES HOUSE (1085)

9331 Providence Road
(Arboretum)
Ca. 1960 glass house
Designed by Charles Bates
Inspired by Phillip Johnson's iconic
1949 glass house



DONALD AND BARBARA SHAPRAY HOUSE (1212)

4428 Whitby Lane (Cotswold)
Ca. 1970 octagonal house
Shapray, a stock broker, designed the house. He later founded Panorama Homebuilders to construct houses such as this. Another is down at Raintree just off Pineville-Matthews Road. Several were built in the western portion of the state.



REV. HARVEY ODELL AND CLARA GRAHAM HOUSE (1135)

4346 La Brea Drive (Hyde Park
Estates)

Ca. 1966 house
From a plan book



WILLIAM B. AND JOHNNIE BULLOCK HOUSE (1062)

4612 Meridian Drive (Hyde Park
Estates)

Ca. 1969 house

Designed by Harvey Gantt



KIRKLAND APARTMENTS (1041)

2126 East 7th Street (Elizabeth)
Ca. 1954 apartments
Owned by C. W. Kirkland, a
plastering contractor



EAST INDEPENDENCE PLAZA (1057)

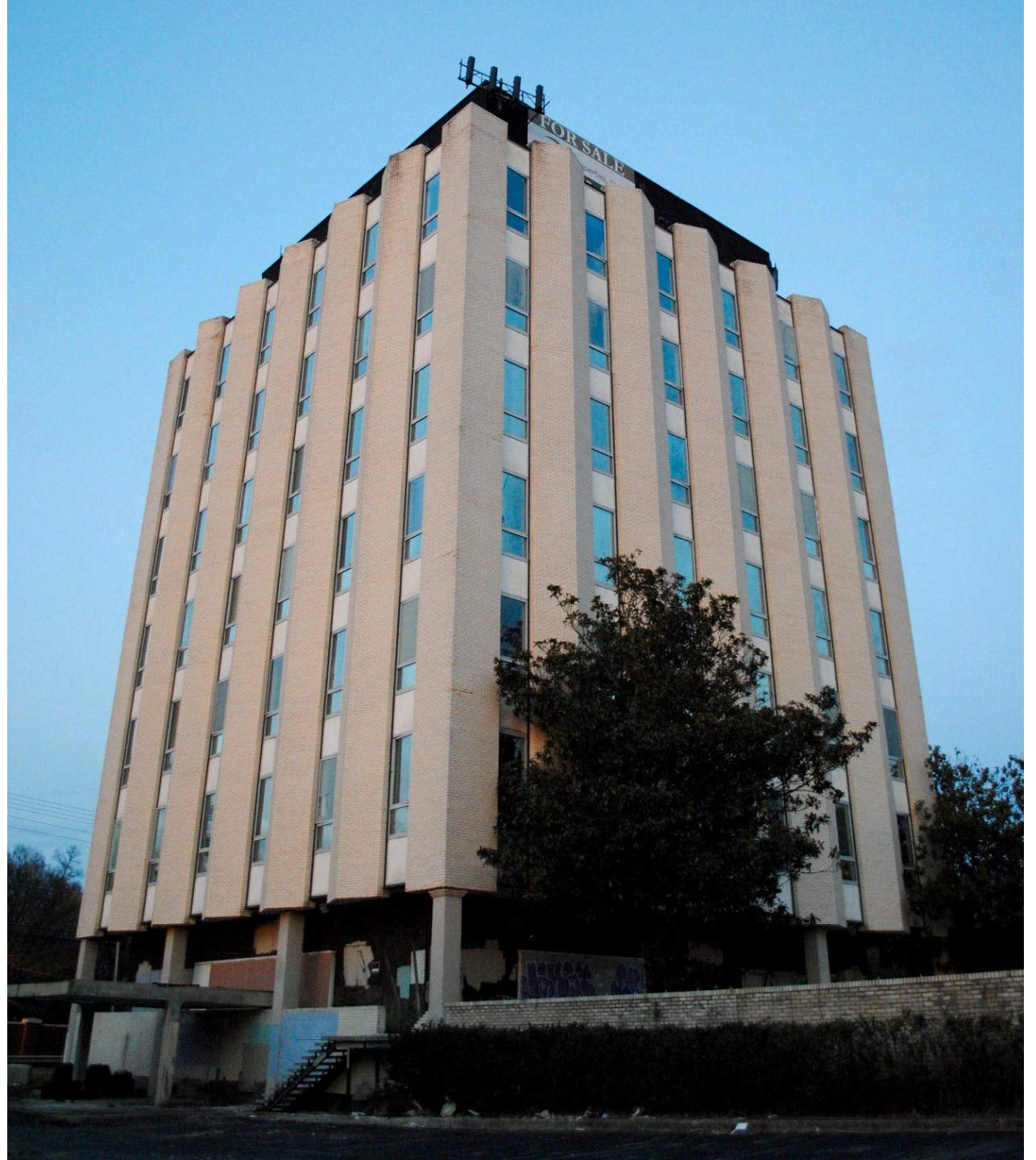
700 East Stonewall Street
Ca. 1972 7-story office building
Designed by A. G. Odell & Associates
At the time of completion, it was the
largest office building in the Southeast
built by a group of minority investors
(led by Julius Chambers, Kenneth
Chambers, and Raleigh Bynum).

ERVIN BUILDING (1255)

4057 East Independence Boulevard

Ca. 1962 8-story office building

Designed by Ferebee and Walters





CAPRI THEATER (1251)

3500 East Independence
Boulevard
Ca. 1964 movie theater
Designed by Charles H. Wheatley



H&S LUMBER COMPANY (1679)

520 West Summit Avenue (South
End/Wilmore)

Ca. 1948 commercial building

Designed by Charles W.
Connelly



REDEEMER LUTHERAN CHURCH (1581)

2422 Ashley Road
Ca. 1956 church
Designed by M. McDowell Brackett
Today is home to Greater
Fellowship Missionary Baptist
Church



J. T. WILLIAMS MIDDLE SCHOOL GYMNASIUM (1245)

2400 Carmine Street (Statesville Avenue)

Ca. 1962 gymnasium

Designed by Biberstein, Bowles,
Meacham & Reed



HOME FINANCE BUILDING (1151)

1102 South Tryon Street
Ca. 1958 commercial building
Designed by J. N. Pease Associates
Called a “small-scale model” of the
Home Finance Group, Inc. building
1957 three-story addition at 119 W.
Eighth



COUNTY OFFICE BUILDING (1091)

700 East 4th Street
Ca. 1961 institutional building
Designed by Charles H. Wheatley
of Sloan & Wheatley
1962 AIA North Carolina Honor
Award



CHARLOTTE TRAIN STATION (1890)

1914 North Tryon Street
Ca. 1962 institutional building
Designed by Friedrich Schmitt of
Walter Hook Associates