

Ramah Creek Conservation Area

Legend

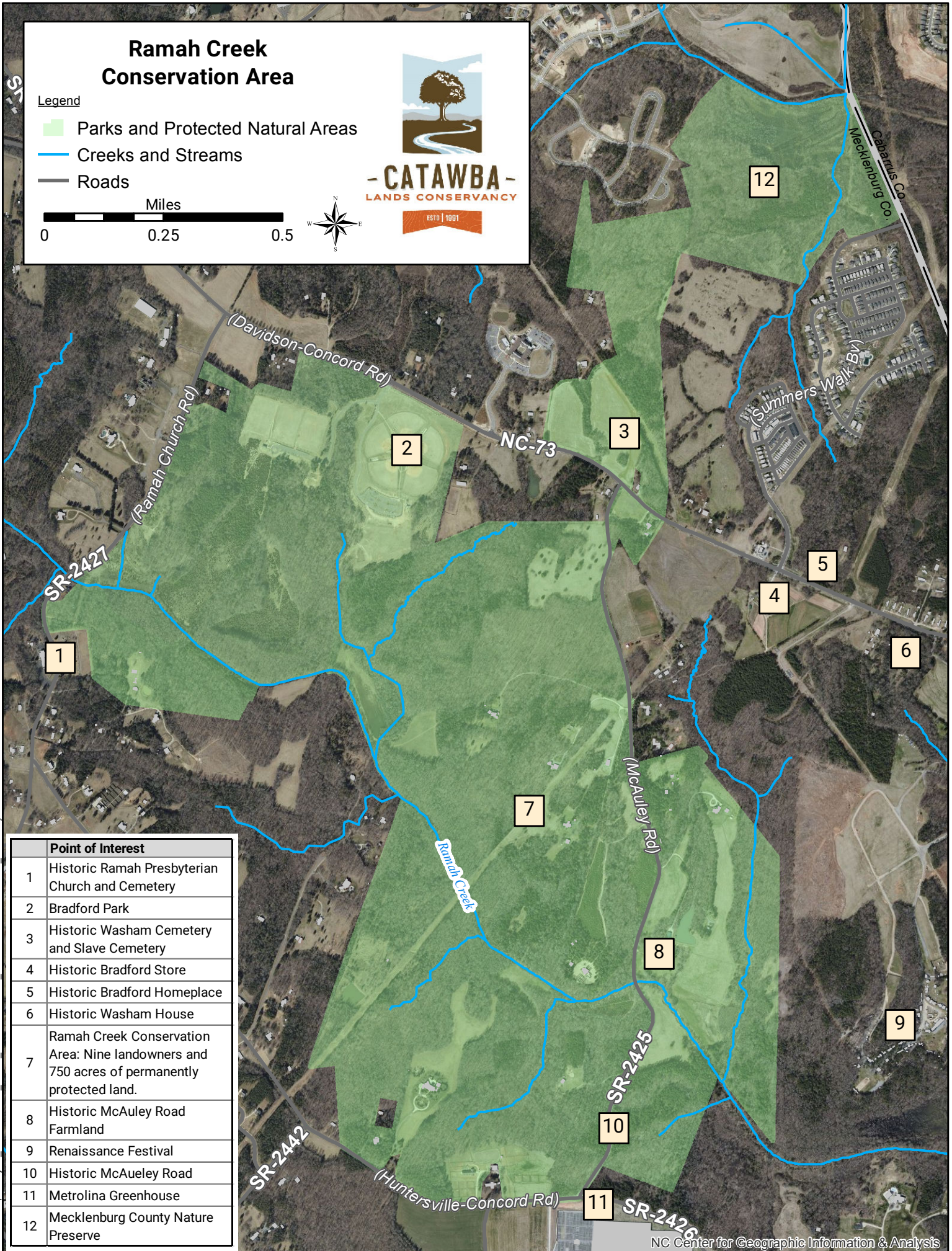
- Parks and Protected Natural Areas
- Creeks and Streams
- Roads

Miles
0 0.25 0.5



CATAWBA
LANDS CONSERVANCY

ESTD 1991



| Point of Interest | |
|-------------------|---------------------------------------------------------------------------------------------|
| 1 | Historic Ramah Presbyterian Church and Cemetery |
| 2 | Bradford Park |
| 3 | Historic Washam Cemetery and Slave Cemetery |
| 4 | Historic Bradford Store |
| 5 | Historic Bradford Homeplace |
| 6 | Historic Washam House |
| 7 | Ramah Creek Conservation Area: Nine landowners and 750 acres of permanently protected land. |
| 8 | Historic McAuley Road Farmland |
| 9 | Renaissance Festival |
| 10 | Historic McAueley Road |
| 11 | Metrolina Greenhouse |
| 12 | Mecklenburg County Nature Preserve |

Path: M:\Maps\Project_Areas\Ramah_Creek_Watershed\2013_RamahConservationPlan_ScenicByPass.mxd