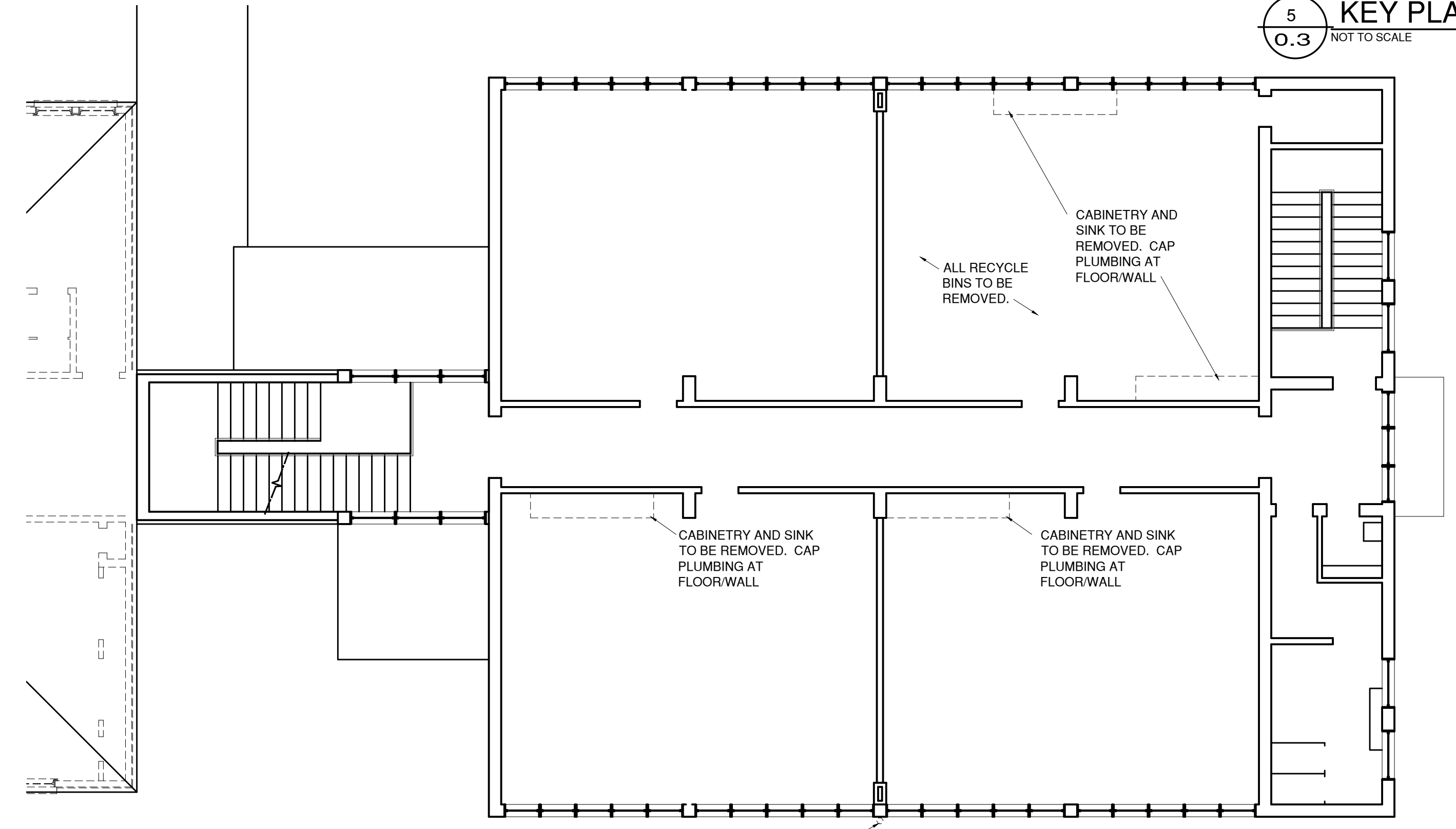


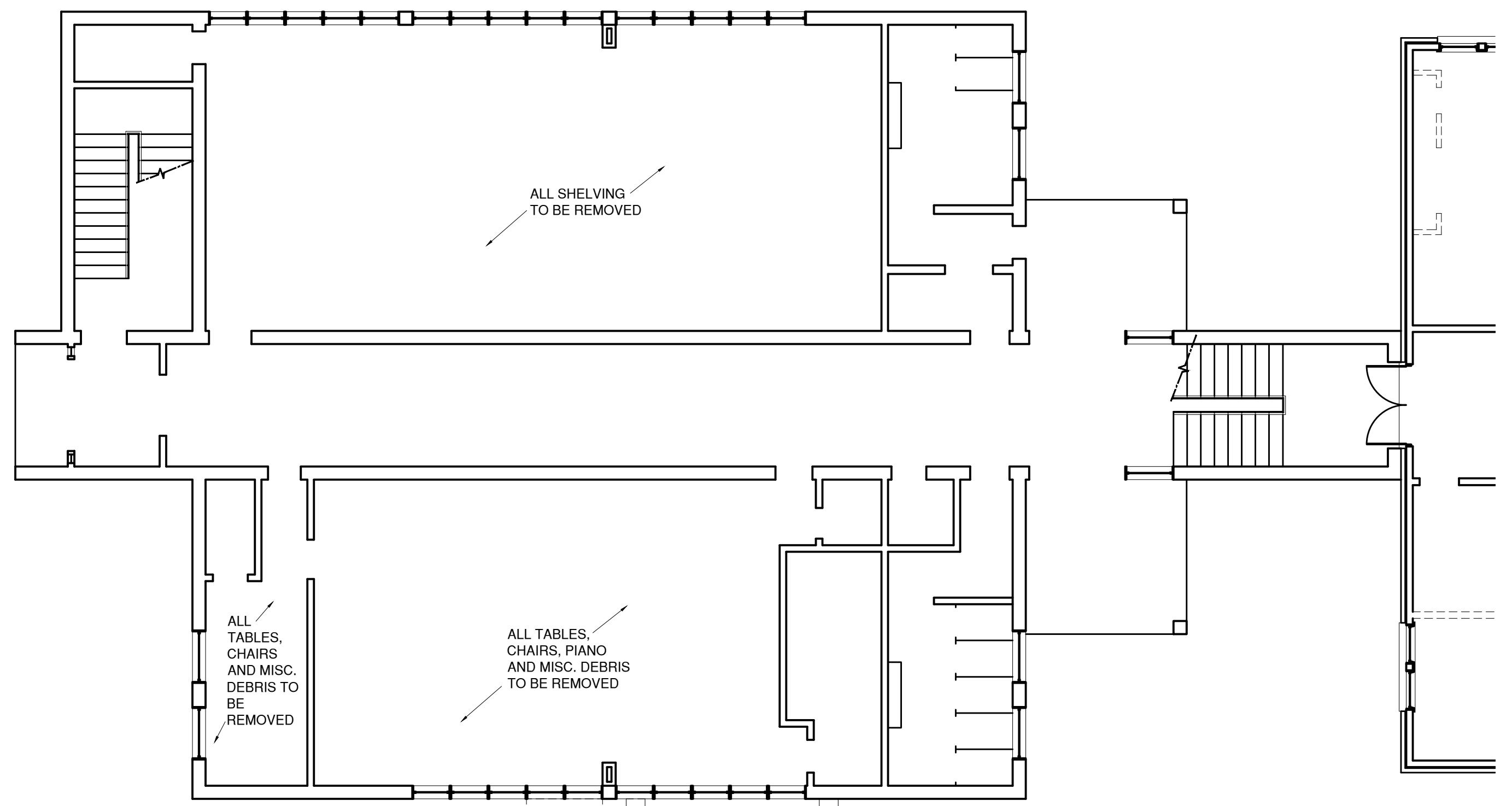
3 SECOND FLOOR PLAN (BUILDING "B")  
A0.3 1/8" = 1'-0"

NOTES:  
1. ALL FURNITURE, BUILDING MATERIALS, MISC. SUPPLIES, DEBRIS AND TRASH ARE TO BE REMOVED FROM THE BUILDING AND DISPOSED OF ACCORDING TO STATE AND LOCAL REGULATIONS.



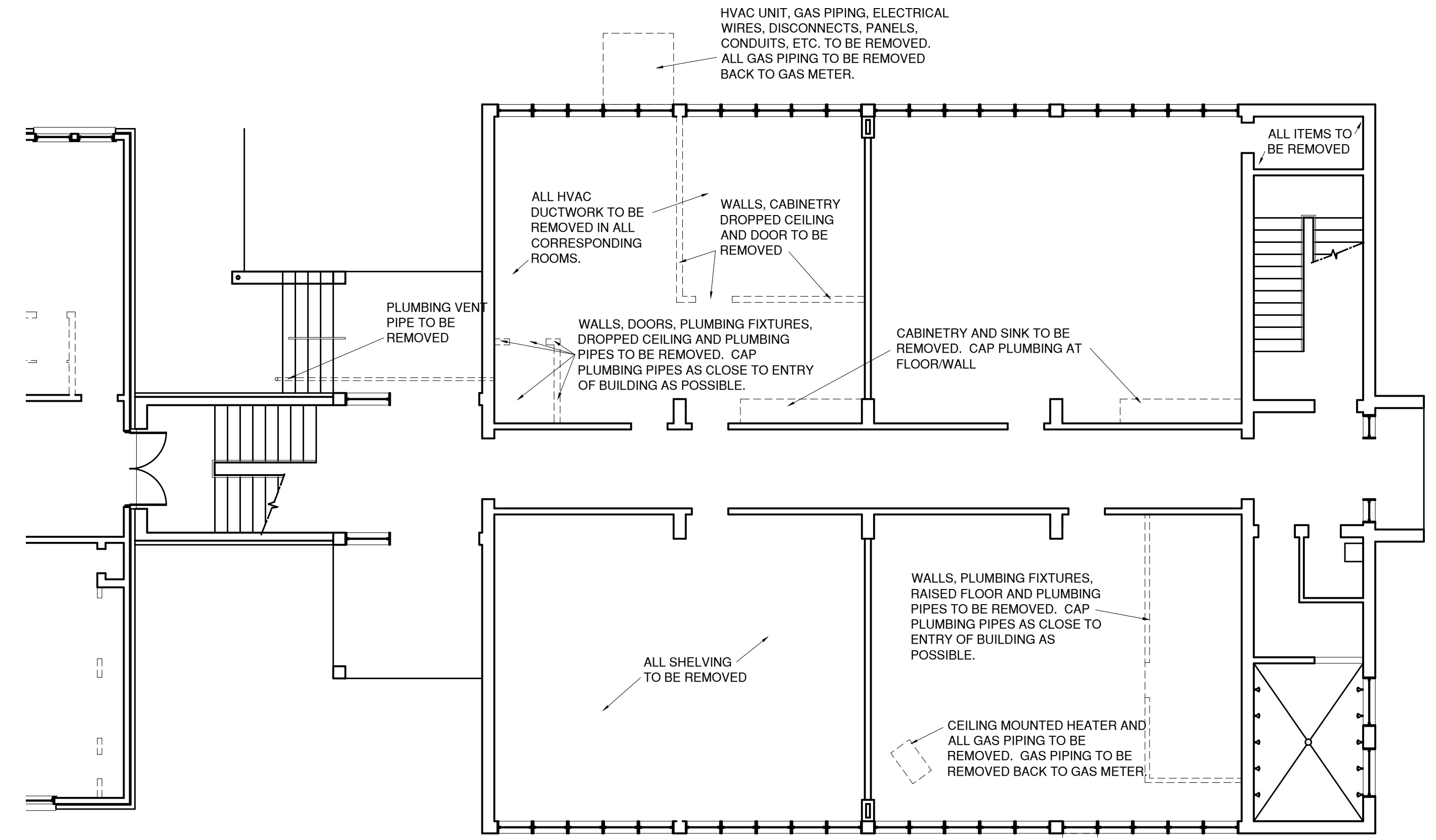
4 SECOND FLOOR PLAN (BUILDING "C")  
A0.3 1/8" = 1'-0"

NOTES:  
1. ALL FURNITURE, BUILDING MATERIALS, MISC. SUPPLIES, DEBRIS AND TRASH ARE TO BE REMOVED FROM THE BUILDING AND DISPOSED OF ACCORDING TO STATE AND LOCAL REGULATIONS.



1 FIRST FLOOR PLAN (BUILDING "B")  
A0.3 1/8" = 1'-0"

NOTES:  
1. ALL FURNITURE, BUILDING MATERIALS, MISC. SUPPLIES, DEBRIS AND TRASH ARE TO BE REMOVED FROM THE BUILDING AND DISPOSED OF ACCORDING TO STATE AND LOCAL REGULATIONS.



2 FIRST FLOOR PLAN (BUILDING "C")  
A0.3 1/8" = 1'-0"

NOTES:  
1. ALL FURNITURE, BUILDING MATERIALS, MISC. SUPPLIES, DEBRIS AND TRASH ARE TO BE REMOVED FROM THE BUILDING AND DISPOSED OF ACCORDING TO STATE AND LOCAL REGULATIONS.