

# HISTORIC ROSEDALE PLANTATION



## OPEN AIR PAVILION



Description of Work Proposed:

We are proposing a new open air pavilion for the Historic Rosedale Plantation property. The purpose of this wood structure is to increase the economic sustainability of this historic gem by providing a place for the residents of Charlotte and the surrounding area to hold both public and private events.

The proposed location for the Pavilion is 137.9' from the house behind a wall of evergreens and plantings with a finish floor elevation of 731.50 which is approximately 4.5 feet lower than the grounds around the Plantation House. This proposed location allows limited visibility from the Plantation House and virtually no visibility from N. Tryon or Hilo Dr. and preserves the historic qualities of the site such as the Archaeological Ruins of the original Plantation Outbuildings, trees and plants that are over 100 years old, and requires minimal young tree removal.

Our intent is to exploit the natural qualities of the materials we are proposing while playing homage to the recently constructed Blacksmith building and maintaining the integrity of the Historic Rosedale House.

Although the Pavilion will be virtually unnoticed when you enter and tour the property (unless you look for it) it will certainly be pleasing to the eye as well as an asset to our community.

We invite each of you to tour.

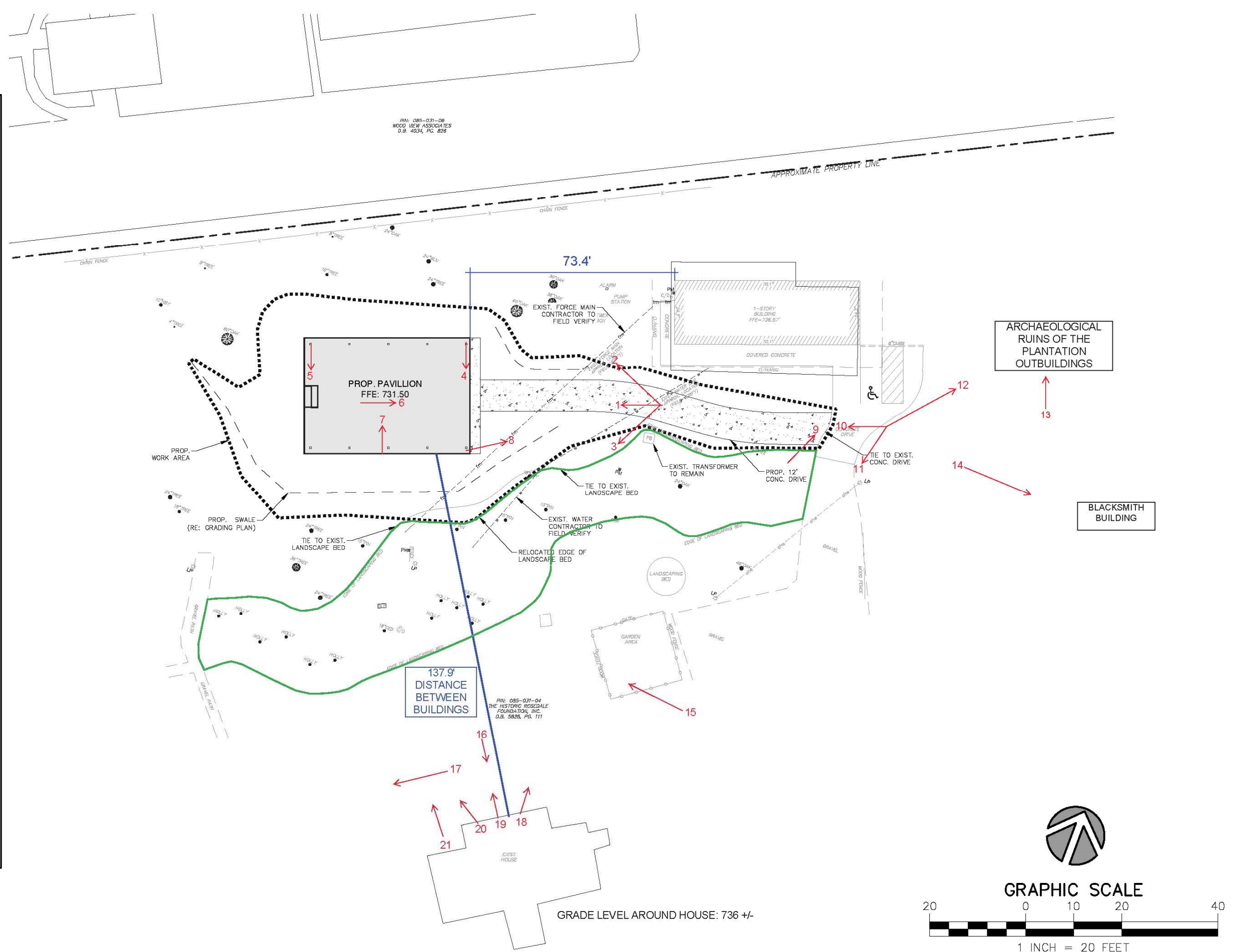






IMAGE 9: VIEW TOWARDS ARCHAEOLOGICAL  
RUINS



IMAGE 8: VIEW FROM PAVILION SITE LOOKING  
TOWARDS THEROSEDAL HOUSE



IMAGE 7: VIEW FROM PAVILION SITE LOOKING  
TOWARDS THE EDGE AT NODA APTS



IMAGE 6: VIEW FROM PAVILION SITE LOOKING  
TOWARDS OFFICE BUILDING



IMAGE 5: VIEW FROM PAVILION SITE LOOKING  
TOWARDS THE ROSEDALE HOUSE



IMAGE 4: VIEW FROM PAVILION SITE LOOKING  
TOWARDS THE ROSEDALE HOUSE



IMAGE 3: VIEW TOWARDS THE ROSEDALE HOUSE



IMAGE 2: VIEW TOWARDS THE EDGE AT NODA



IMAGE 1: PAVILION SITE

## TOUR OF THE PROPERTY





IMAGE 17: VIEW FROM HOUSE TOWARDS GARDEN



IMAGE 16: ROSEDALE HOUSE



IMAGE 15: VIEW TOWARD SITE FROM FENCED GARDEN



IMAGE 14: ROSEDALE BLACKSMITH BUILDING



IMAGE 12: VIEW TOWARDS ARCHAEOLOGICAL RUINS



IMAGE 11: VIEW TOWARDS ROSEDALE HOUSE

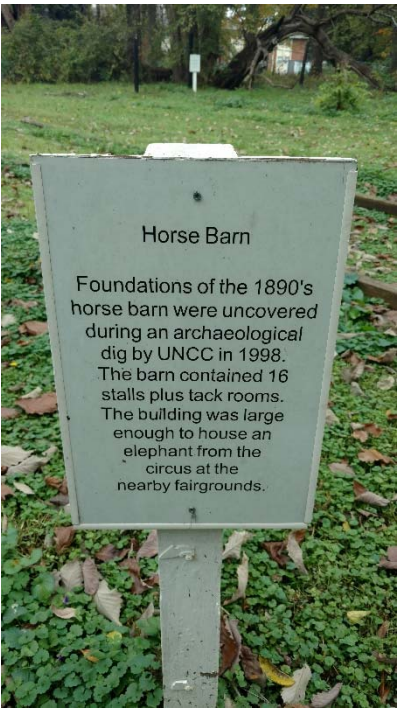


IMAGE 13: ARCHAEOLOGICAL RUINS



IMAGE 10: VIEW TOWARDS PAVILION SITE

# TOUR OF THE PROPERTY





IMAGE 21: VIEW FROM GRADE LOOKING  
TOWARD PAVILION SITE



IMAGE 20: VIEW FROM SECOND FLOOR  
LOOKING TOWARD PAVILION SITE



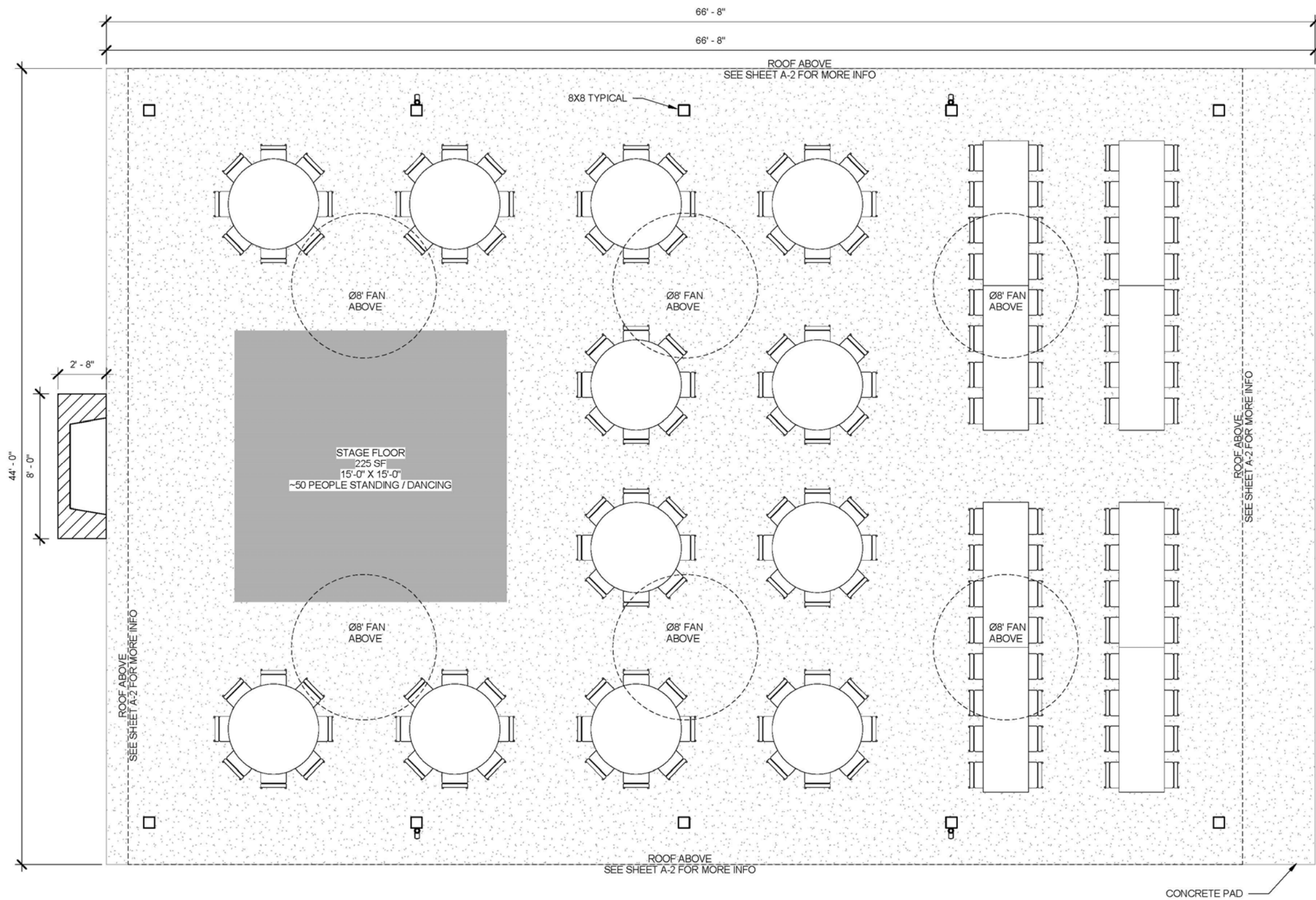
IMAGE 19: VIEW FROM SECOND FLOOR  
LOOKING TOWARDS PAVILION SITE



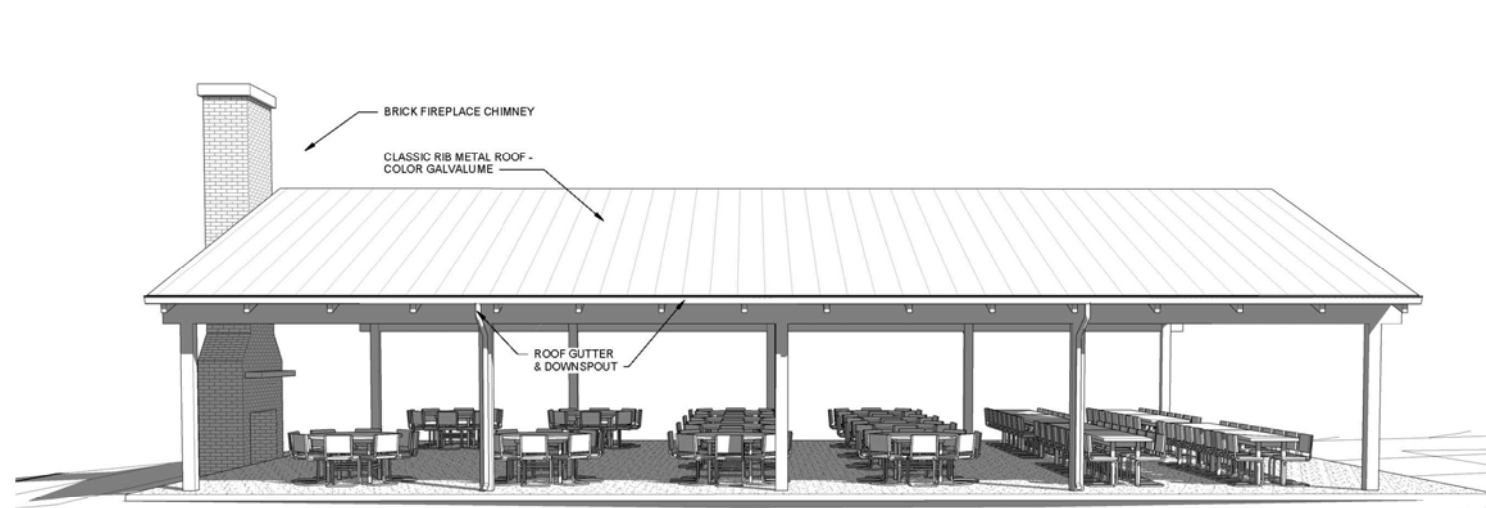
IMAGE 18: VIEW FROM SECOND FLOOR  
LOOKING TOWARDS OFFICE

## VIEWS FROM THE HOUSE

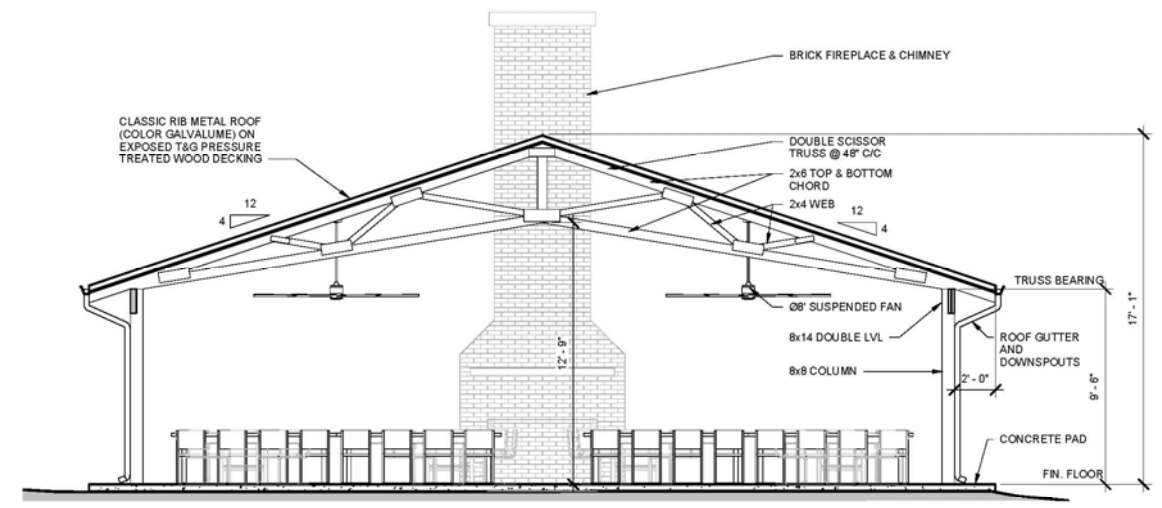




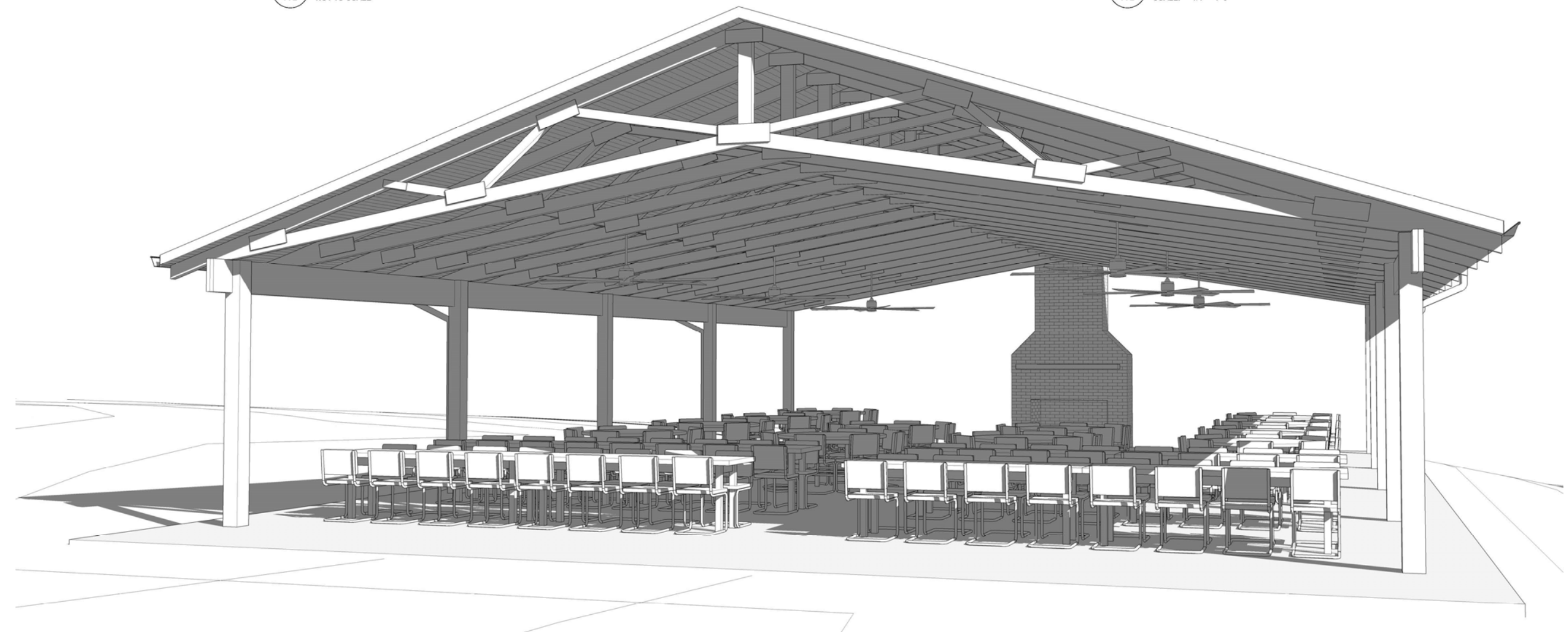
**1 FLOOR PLAN & PROPOSED SEATING PLAN**  
A-1 SCALE: 1/4" = 1'-0"



3 3D VIEW - SIDE ELEVATION  
A-2 NOT TO SCALE



2 CROSS SECTION  
A-2 SCALE: 1/4" = 1'-0"



1 3D VIEW - FRONT ELEVATION  
A-2 NOT TO SCALE