

Dr. Dan Lincoln Morrill
B.A. History Wake Forest University
Ph.D. History Emory University
Professor Emeritus Of History UNCC
Consulting Director Charlotte Mecklenburg
Historic Landmarks Commission
Preservation Consultant

REQUIREMENTS OF HISTORIC LANDMARKS N.C.G.S. 160A-400

- a. Special Significance In Terms Of Its History, Architecture, And/Or Cultural Importance.
- b. Integrity Of Design, Setting, Workmanship, Materials, Feeling, And/Or Association.

Charles R. McLaughlin House (c. 1907), 501 West John Street

a. Special Significance In Terms Of Its History, Architecture, And/Or Cultural Importance. The Charlotte-Mecklenburg Historic Landmarks Commission judges that the Charles R. McLaughlin House possesses special significance in terms of the Town of Matthews. The Commission bases its judgment on the following considerations:

- 1) The Charles R. McLaughlin House was the home of Charles R. McLaughlin from c. 1907 until 1952. McLaughlin was the Mayor of Matthews from 1929 until 1941, a period of significant growth in Matthews. McLaughlin was also a prominent businessman in Matthews and its environs.
- 2) The exterior of the Charles R. McLaughlin House retains a high degree of physical integrity.
- 3) The Charles R. McLaughlin House is one of three extant Victorian style homes in Matthews, and the only Victorian style residence in Matthews that is not a Charlotte-Mecklenburg Historic Landmark.

b. Integrity Of Design, Setting, Workmanship, Materials, Feeling, And/Or Association. The Charlotte-Mecklenburg Historic Landmarks Commission judges that the physical description of the Charles R. McLaughlin House included in this report demonstrates that the Charles R. McLaughlin House meets this criterion.

Evolution Of Matthews Architecture

Traditional Farmhouse Style



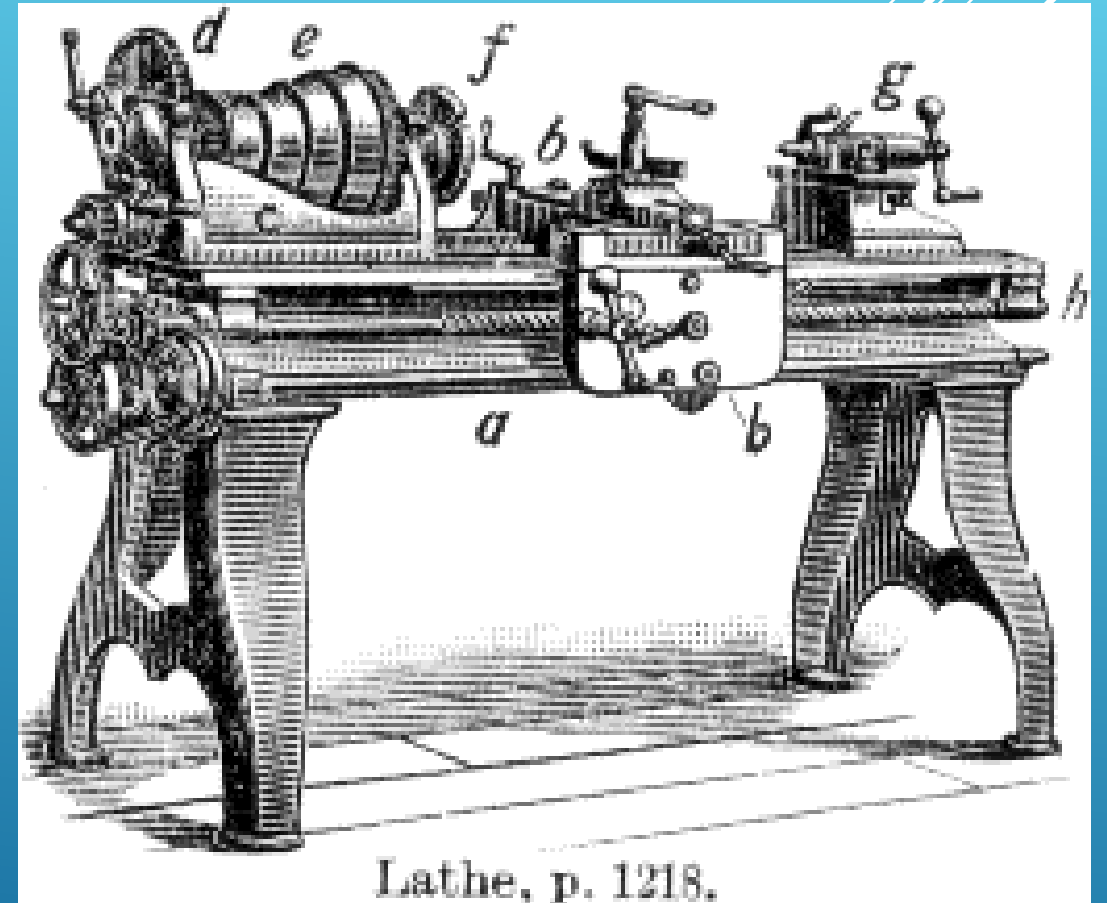
Grier-Furr House (c. 1885), 500 West John Street



Carolina Central Railroad (1874)



Scroll Saw



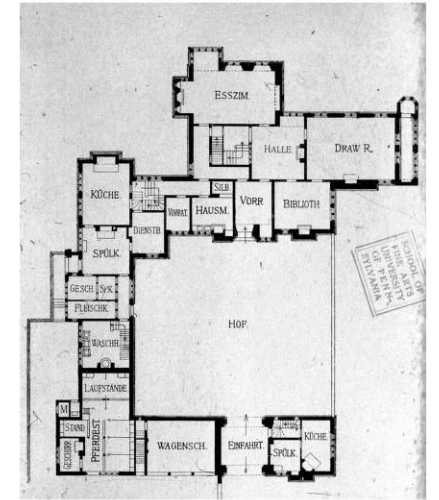
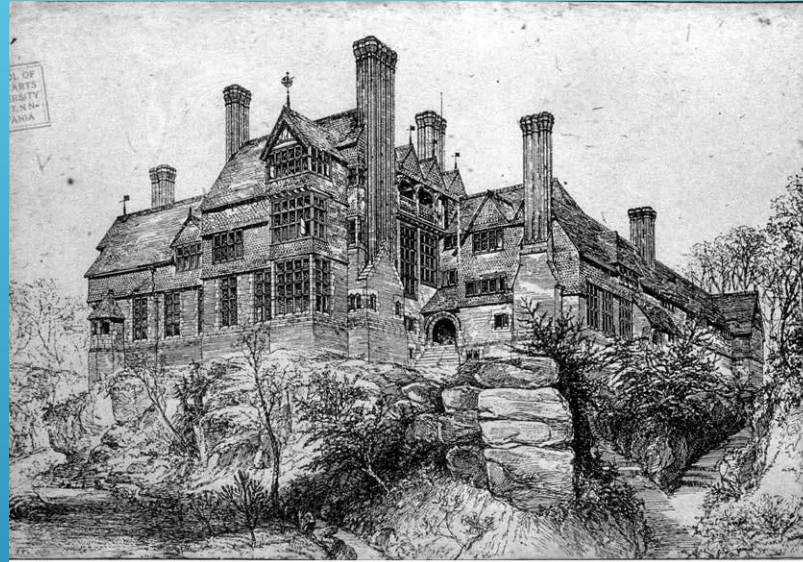
Lathe, p. 1218.

Mechanical Lathe

Queen Anne Style



Richard Norman Shaw (1831-1912)



Queen Anne Style



Guiding Principles:
Elaborate Ornamentation
Complexity Of Form

Queen Anne Style



Reid House (1890), 134 West John Street

Folk Victorian Style



Funderburk-Plaxco House (c. 1880), 316 East Matthews Street

Folk Victorian Style



McLaughlin-Bost House (c. 1891), 415 West John Street

Folk Victorian Style



Barnum and Sarah Sustare House (c. 1900), 13700 Idlewild Road

Folk Victorian Style



Charles R. McLaughlin House (c. 1907), 501 West John St.

Folk Victorian Style



Charles R. McLaughlin House (c. 1907), 501 West John St.

Folk Victorian Style



Charles R. McLaughlin House (c. 1907), 501 West John St.

Folk Victorian Style



Charles R. McLaughlin House (c. 1907), 501 West John St.

Folk Victorian Style



Charles R. McLaughlin House (c. 1907), 501 West John St.

Folk Victorian Style



Charles R. McLaughlin House (c. 1907), 501 West John St.

Folk Victorian Style



Charles R. McLaughlin House (c. 1907), 501 West John St.

Charles Rhyon McLaughlin (1868-1952)



Charles R. McLaughlin House (c. 1907), 501 West John St.

Charles Rhyon McLaughlin (1868-1952)



Charles R. McLaughlin House (c. 1907), 501 West John St.



Mayor of Matthews 1929-1941

Charles Rhyon McLaughlin (1868-1952)



Builder L. H. Yandle, Mayor McLaughlin, Postmaster General Smith
W. Purdum, Rep. A. L. Bulwinkle, Post Office Dedication May 1939

Charles R. McLaughlin House (c. 1907), 501 West John St.

Charles R. McLaughlin House (c. 1907), 501 West John Street

a. Special Significance In Terms Of Its History, Architecture, And/Or Cultural Importance. The Charlotte-Mecklenburg Historic Landmarks Commission judges that the Charles R. McLaughlin House possesses special significance in terms of the Town of Matthews. The Commission bases its judgment on the following considerations:

- 1) The Charles R. McLaughlin House was the home of Charles R. McLaughlin from c. 1907 until 1952. McLaughlin was the Mayor of Matthews from 1929 until 1941, a period of significant growth in Matthews. McLaughlin was also a prominent businessman in Matthews and its environs.
- 2) The exterior of the Charles R. McLaughlin House retains a high degree of physical integrity.
- 3) The Charles R. McLaughlin House is one of three extant Victorian style homes in Matthews, and the only Victorian style residence in Matthews that is not a Charlotte-Mecklenburg Historic Landmark.

b. Integrity Of Design, Setting, Workmanship, Materials, Feeling, And/Or Association. The Charlotte-Mecklenburg Historic Landmarks Commission judges that the physical description of the Charles R. McLaughlin House included in this report demonstrates that the Charles R. McLaughlin House meets this criterion.

REQUIREMENTS OF HISTORIC LANDMARKS N.C.G.S. 160A-400

- a. Special Significance In Terms Of Its History, Architecture, And/Or Cultural Importance.
- b. Integrity Of Design, Setting, Workmanship, Materials, Feeling, And/Or Association.

a. Special Significance In Terms Of Its History, Architecture, And/Or Cultural Importance . The Charlotte-Mecklenburg Historic Landmarks Commission judges that the Barnum A. Sustare House possesses special significance in terms of the Town of Matthews. The Commission bases its judgment on the following considerations:

- 1) The Barnum A. Sustare House is among the most sophisticated and imposing examples of Craftsman style architecture in Matthews, North Carolina.
- 2) The Barnum A. Sustare House retains a high degree of physical integrity.
- 3) The Barnum A. Sustare House has special significance as an artifact that documents the evolution of a prosperous farm family from rural to small town life in Mecklenburg County in the late nineteenth and early twentieth centuries.

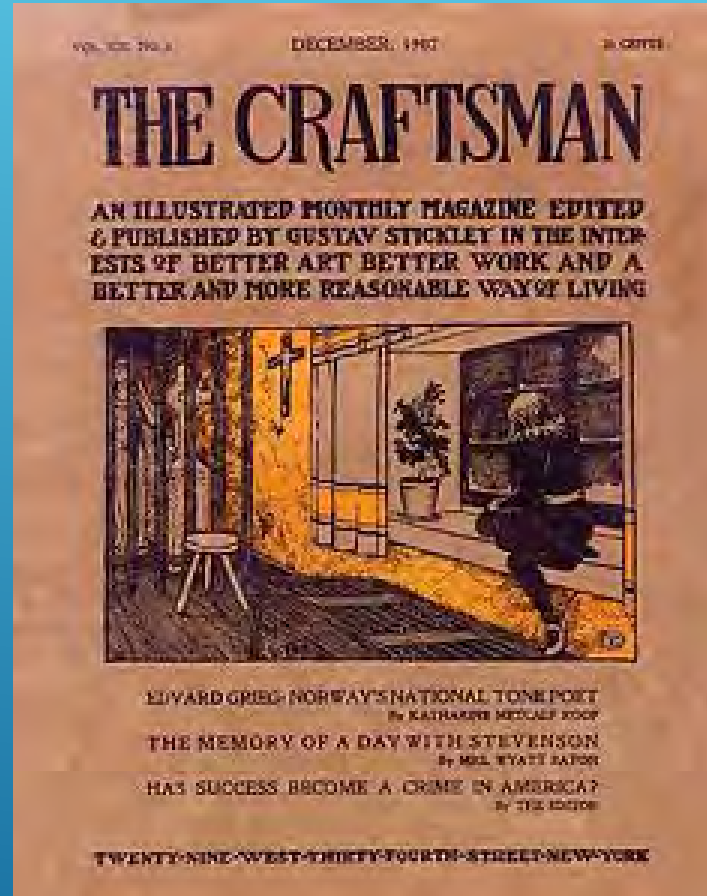
b. Integrity Of Design, Setting, Workmanship, Materials, Feeling, And/Or Association. The Charlotte-Mecklenburg Historic Landmarks Commission judges that the physical description of the Barnum A. Sustare House included in this report demonstrates that the Barnum A. Sustare House meets this criterion.

Barnum A. Sustare House (1919), 110 West Matthews Street.

American Arts and Crafts Movement



Gustav Stickley (1858-1942)



The Craftsman (1901-1916)



Guiding Principles:
Unadornment
Simplicity
Reject Industrialization &
Celebrate Handicrafts

Barnum A. Sustare House (1919), 110 West Matthews Street.

Craftsman Bungalows: Easy To Build. Well Suited For Hot Climates.



Gustav Stickley (1858-1942)



Barnum A. Sustare House (1919), 110 West Matthews Street.

Craftsman Bungalows: Easy To Build. Well Suited For Hot Climates.



Gustav Stickley (1858-1942)



Barnum A. Sustare House (1919), 110 West Matthews Street.

Craftsman Bungalows



Barnum A. Sustare House (1919), 110 West Matthews Street.

Craftsman Bungalows



Barnum A. Sustare House (1919), 110 West Matthews Street.

Craftsman Bungalows



Barnum A. Sustare House (1919), 110 West Matthews Street.

Craftsman Bungalows



Barnum A. Sustare House (1919), 110 West Matthews Street.

Craftsman Bungalows



Barnum A. Sustare House (1919), 110 West Matthews Street.

Craftsman Bungalows



Barnum A. Sustare House (1919), 110 West Matthews Street.

Craftsman Bungalows



Barnum A. Sustare House (1919), 110 West Matthews Street.

Craftsman Bungalows



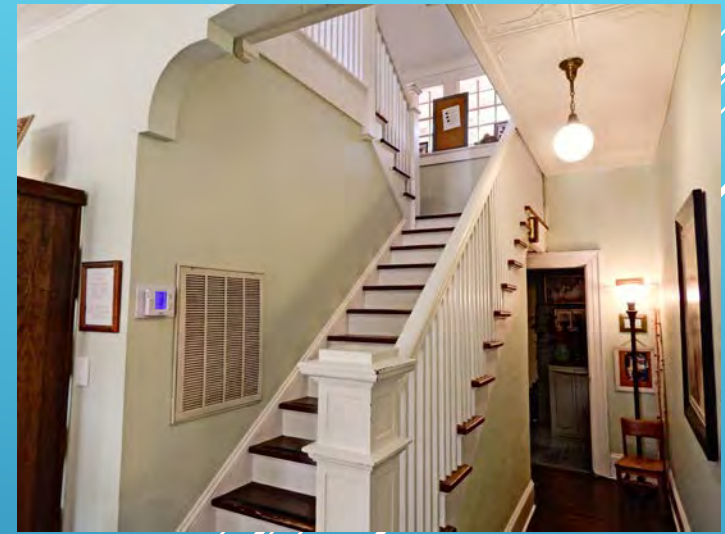
Barnum A. Sustare House (1919), 110 West Matthews Street.

Craftsman Bungalows



Barnum A. Sustare House (1919), 110 West Matthews Street.

Craftsman Bungalows



Barnum A. Sustare House (1919), 110 West Matthews Street.

Craftsman Bungalows



Barnum A. Sustare House (1919), 110 West Matthews Street.

Craftsman Bungalows



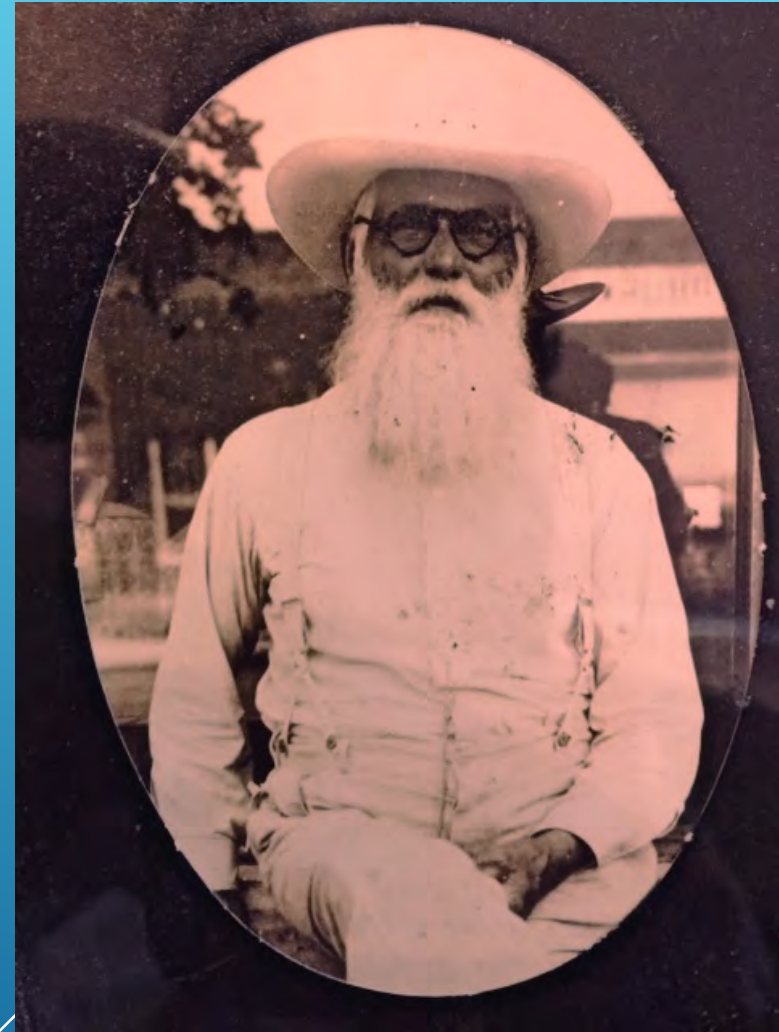
Barnum A. Sustare House (1919), 110 West Matthews Street.

Hollie Elizabeth Sustare (1837-1902)



Barnum A. Sustare House (1919), 110 West Matthews Street.

Barnum Adam Sustare (1862-1951)



Barnum A. Sustare House (1919), 110 West Matthews Street.

James Ervin Sustare Left & Barnum Adam Sustare Right (1921)

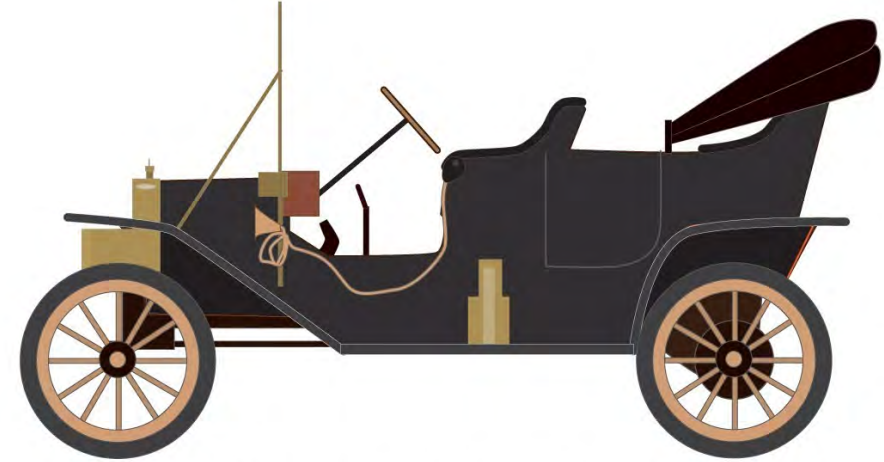


Barnum A. Sustare House (1919), 110 West Matthews Street.

Completion Of Paved Road From Charlotte To Matthews (1921)



Monroe Rd. Gas Station



FORD MODEL T

1908

Barnum A. Sustare House (1919), 110 West Matthews Street.

Sustare Public Pool And Recreation Park (1922)



Barnum A. Sustare House (1919), 110 West Matthews Street.

Sustare Public Pool And Recreation Park (1922)



SUSTARE'S POOL
IS NOW OPEN

Sustare's Pool, now in its 39th season, is one of the finest in North Carolina.

Come out and spend a day with us . . . You can swim, sun bathe, picnic . . . we are a family place. . . .

Open weekdays: 10 a.m. to 6 p.m.
Sundays: 1 p.m. to 6 p.m.
Adults: 51 cents; children: 26 cents.
(Available evenings for special groups by reservation.)

Easy to reach from Charlotte: Drive out Independence Boulevard to Matthews sign (6 miles from City Limit), turn right and there you are.

FOR INFORMATION, PHONE VI 7-4633
SUSTARE'S POOL, MATTHEWS, N. C.



Barnum A. Sustare House (1919), 110 West Matthews Street.

Sustare Public Pool And Recreation Park (1922)



Sustare-Kuester Fete (1928)

Barnum A. Sustare House (1919), 110 West Matthews Street.

Sustare Public Pool And Recreation Park (1922)



L-R Faison Kuester, James Sustare, Barnum Sustare, Clarence Kuester

Barnum A. Sustare House (1919), 110 West Matthews Street.

Sustare Public Pool And Recreation Park (1922)



Bonnie Sustare (1908-1999)



Augusta Sustare (1905-2004)

Barnum A. Sustare House (1919), 110 West Matthews Street.

a. Special Significance In Terms Of Its History, Architecture, And/Or Cultural Importance . The Charlotte-Mecklenburg Historic Landmarks Commission judges that the Barnum A. Sustare House possesses special significance in terms of the Town of Matthews. The Commission bases its judgment on the following considerations:

- 1) The Barnum A. Sustare House is among the most sophisticated and imposing examples of Craftsman style architecture in Matthews, North Carolina.
- 2) The Barnum A. Sustare House retains a high degree of physical integrity.
- 3) The Barnum A. Sustare House has special significance as an artifact that documents the evolution of a prosperous farm family from rural to small town life in Mecklenburg County in the late nineteenth and early twentieth centuries.

b. Integrity Of Design, Setting, Workmanship, Materials, Feeling, And/Or Association. The Charlotte-Mecklenburg Historic Landmarks Commission judges that the physical description of the Barnum A. Sustare House included in this report demonstrates that the Barnum A. Sustare House meets this criterion.

Barnum A. Sustare House (1919), 110 West Matthews Street.