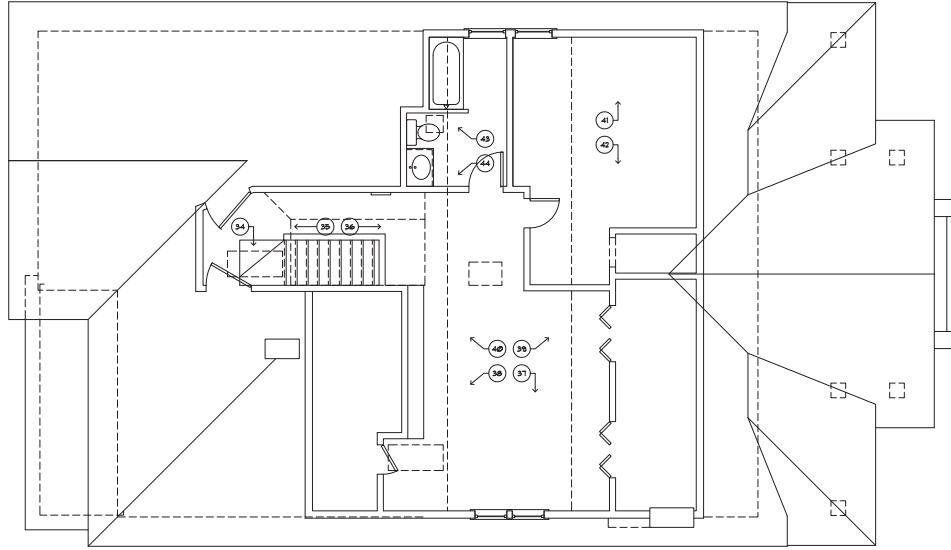


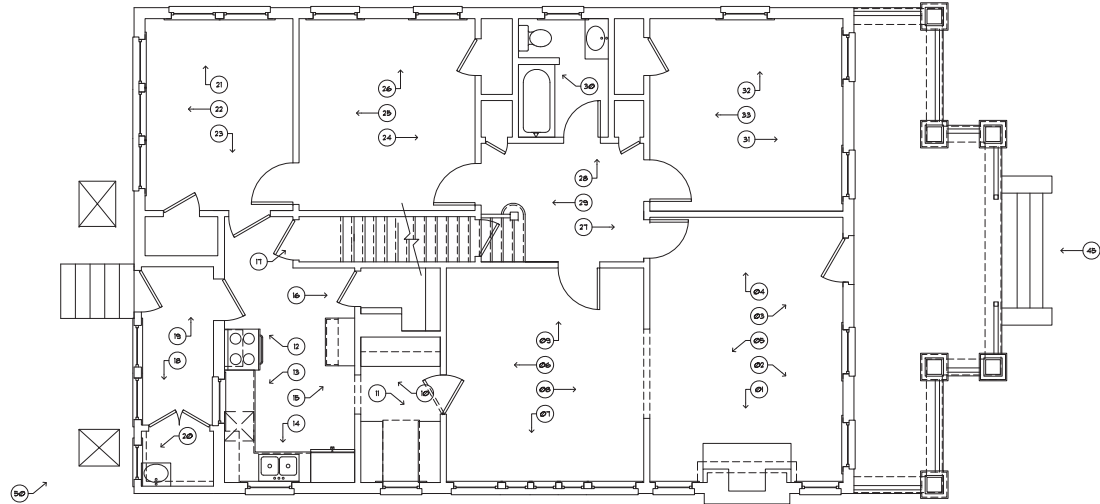
DATES:

Existing
16 May 2011
Schematic
3 August 2011
Program Design
11 December 2011
Final Design
21 December 2011
9 January 2012
Historic District / Landmark
Program Design
Final Pricing
Revisions



1 EXISTING UPPER LEVEL PHOTO KEY
SCALE: 1/4"=1'-0"

31



1 EXISTING MAIN LEVEL PHOTO KEY
SCALE: 1/4"=1'-0"





A white cabinet with an open shelf at the top containing several cookbooks. Below the shelf is a stainless steel microwave oven.

A white door with a glass insert. The glass insert is divided into four panes. The door has a brass doorknob and a black handle.

A stainless steel oven with a gas cooktop. A silver kettle is on the cooktop. The oven has a digital display and control panel.

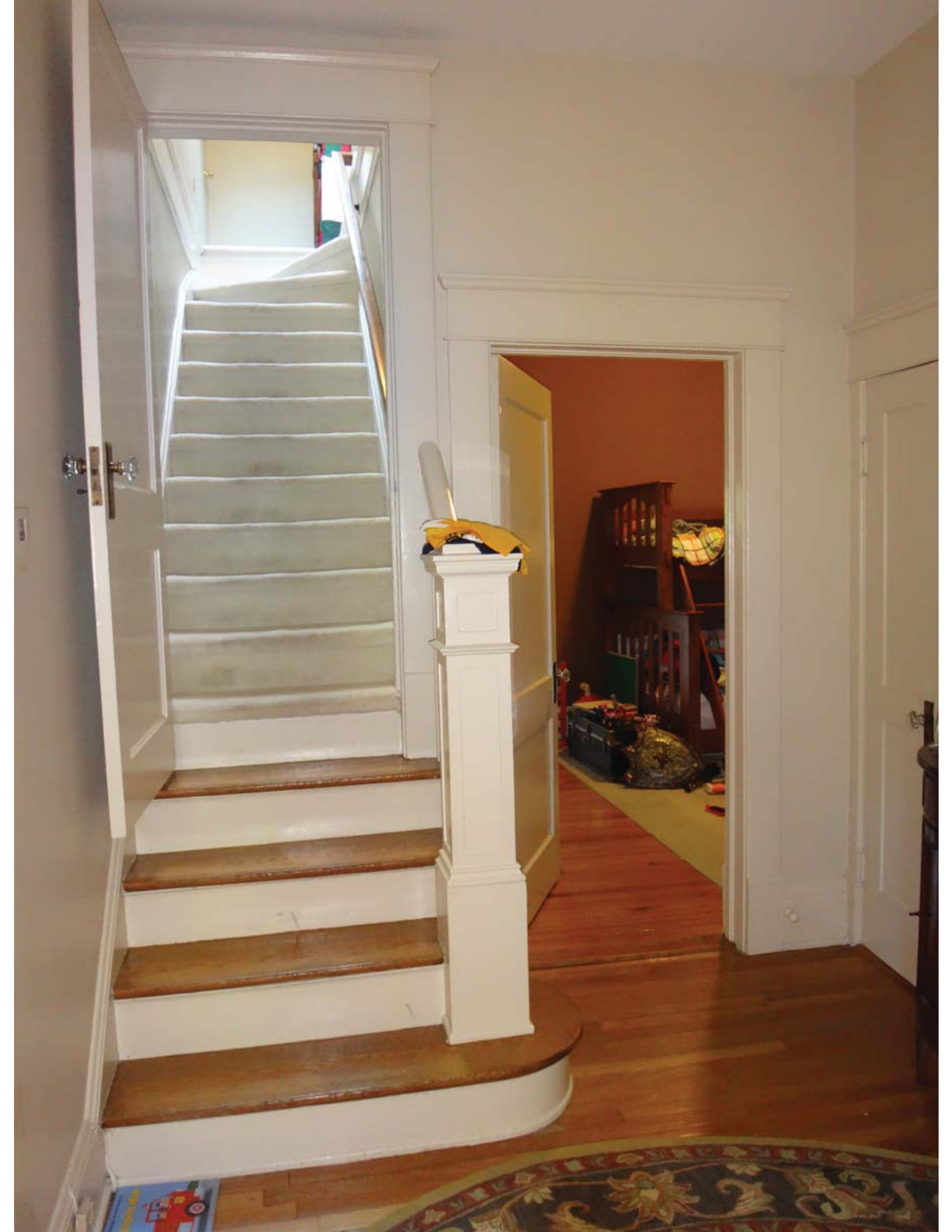
A dark countertop with various kitchen items, including jars, a coffee maker, and a box of instant noodle soup. Below the countertop are white cabinets and drawers.

Two white, dome-shaped pendant lights hanging from the ceiling.

A window with a white frame and multiple panes, looking out onto a green landscape.

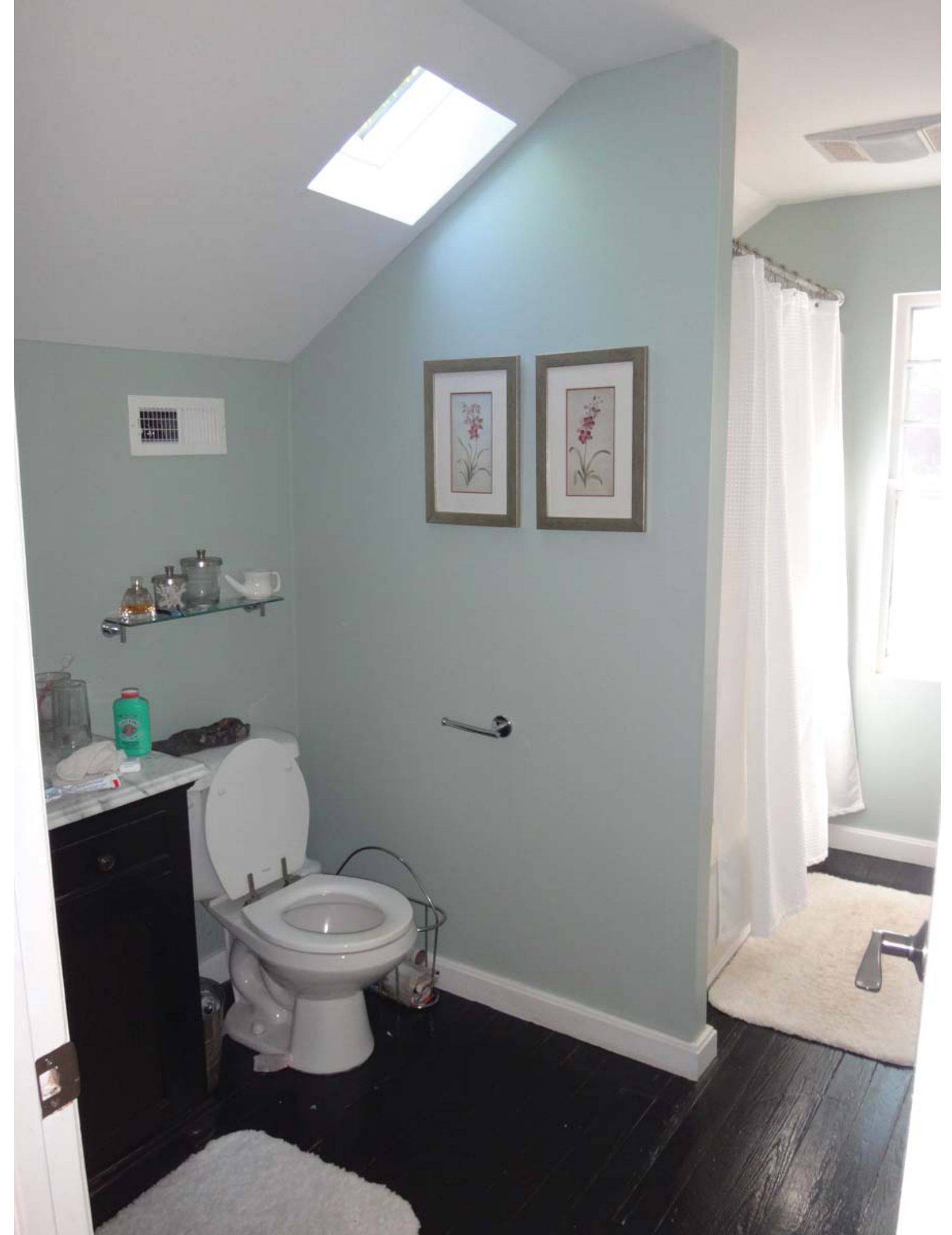
A patterned rug on the floor, partially visible in the bottom left corner.













1708







