

303 DELBURG STREET

DAVIDSON, NC

303 DELBURG STREET

DAVIDSON, NC

INDEX OF DRAWINGS

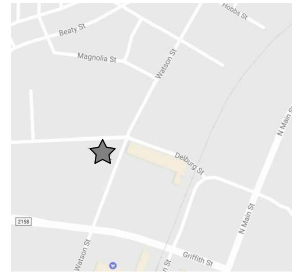
- C-100 COVER
- SP-100 SITE PLAN
- A-101 GARAGE PLANS
- A-201 GARAGE ELEVATIONS

PROJECT SQUARE FOOTAGE

EXISTING (TO OUTSIDE FACE OF STUD)		F.A.R. (TO OUTSIDE FACE OF STUD)	
MAIN LEVEL HEATED	936 SQ. FTG.	ALLOWABLE F.A.R.	2,520 SQ. FTG.
FRONT PORCH	185 SQ. FTG.	MAIN LEVEL	1,805 SQ. FTG.
TOTAL	1,121 SQ. FTG.		

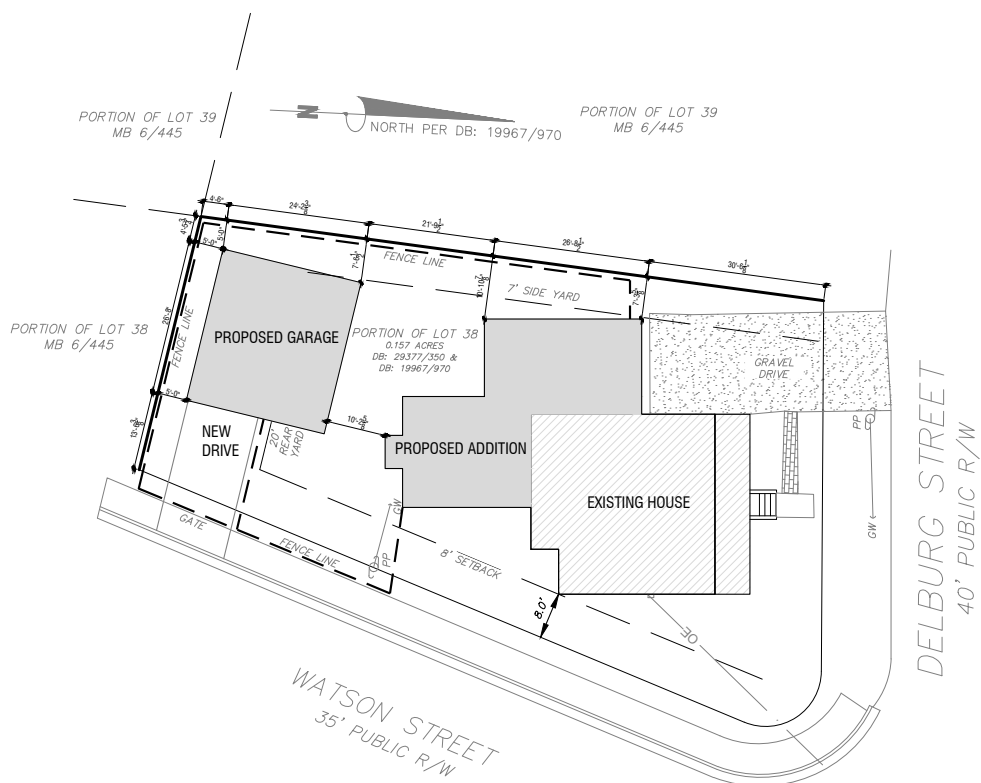
NEW (TO OUTSIDE FACE OF STUD)		GARAGE FOOTPRINT (TO OUTSIDE FACE OF STUD)	
MAIN LEVEL HEATED	1,787 SQ. FTG.	ALLOWABLE FOOTPRINT FOR ACCESSORY STRUCTURE	650 SQ. FTG.
FRONT PORCH	185 SQ. FTG.	FOOTPRINT SHOWN	649 SQ. FTG.
TOTAL	1,972 SQ. FTG.		

VICINITY MAP



COVER

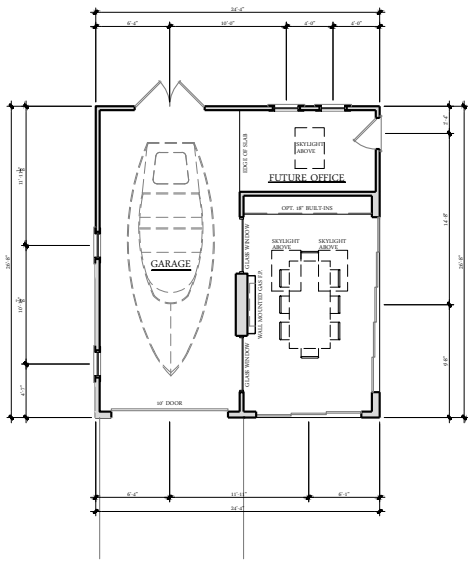
C-100



303 DELBURG STREET
 DAVIDSON, NC

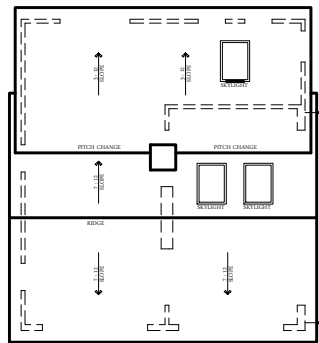
SITE PLAN

SP-100



NEW FLOOR PLAN

11/14/17



NEW ROOF PLAN

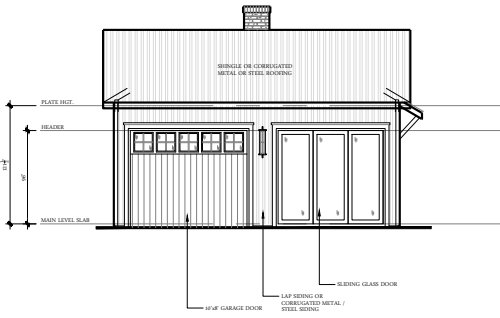
11/14/17

303 DELBURG STREET

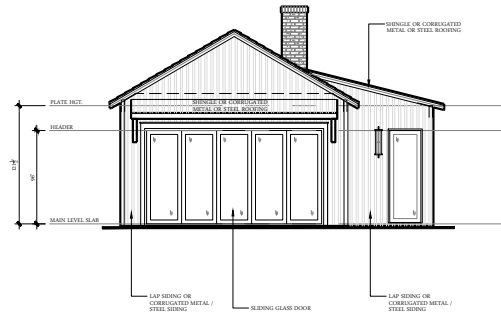
DAVIDSON, NC

GARAGE
 PLANS

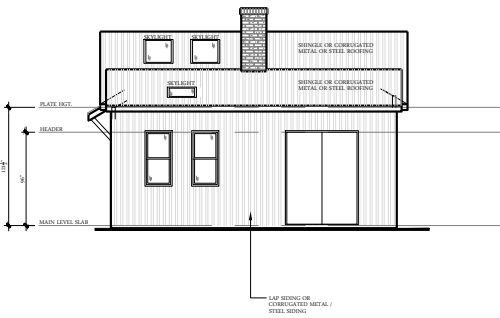
A-101



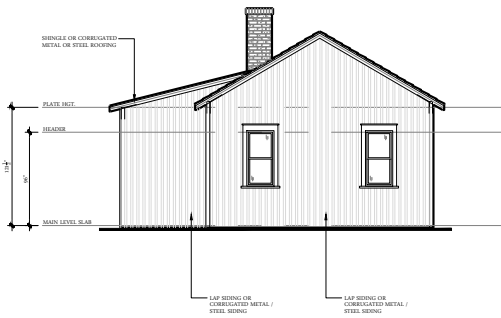
1 GARAGE LEFT ELEVATION (WATSON STREET) 1/4"=1'-0"



2 NEW FRONT ELEVATION (FACING HOUSE) 1/4"=1'-0"



3 NEW RIGHT ELEVATION 1/4"=1'-0"



4 NEW REAR ELEVATION 1/4"=1'-0"

303 DELBURG STREET

DAVIDSON, NC

GARAGE ELEVATIONS
A-201