

# THE JOHNSTON BUILDING



212 South Tryon Street

## CONSTRUCTION DOCUMENTS

PROJECT NUMBER: 4085-002

PROJECT DATE: August 7th, 2017

### VOLUME 1

CIVIL      LANDSCAPE MECHANICAL      STRUCTURAL PLUMBING      ARCHITECTURAL ELECTRICAL



ODELL

212 S. Tryon Street  
Suite 980  
Charlotte, NC 28281  
(T) 704-414-1000 (F) 704-414-1111  
www.odell.com

CHARLOTTE, NC      RICHMOND, VA  
CONSULTANT

CONSTRUCTION DOCUMENTS

© 2017 ODELL Associates, Inc., All Rights Reserved

THE JOHNSTON BUILDING

212 South Tryon Street

DILWEG

#### PROCESS APPROVALS

##### SCHEMATIC DESIGN

SIGNATURE: \_\_\_\_\_

DATE: \_\_\_\_\_

##### DESIGN DEVELOPMENT

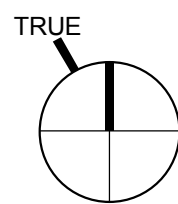
SIGNATURE: \_\_\_\_\_

DATE: \_\_\_\_\_

##### CONTRACT DOCUMENTS

SIGNATURE: \_\_\_\_\_

DATE: \_\_\_\_\_



REVISION	DATE	DESCRIPTION
ADDENDA OR MODIFICATION		
CD	xx/xx/2017	CONSTRUCTION DOCUMENTS
DD	xx/xx/2017	DESIGN DEVELOPMENT
SD	xx/xx/2017	SCHEMATIC DESIGN
ISSUE	DATE	DESCRIPTION

##### FULL SET ISSUES

PROJECT NO: 4085-002

P.I.C.

P MGR.

P ARCH.

DESIGN BY

JOB CAPTAIN

DRAWN BY

CHECKED BY

M. Montgomery

Author

Checker

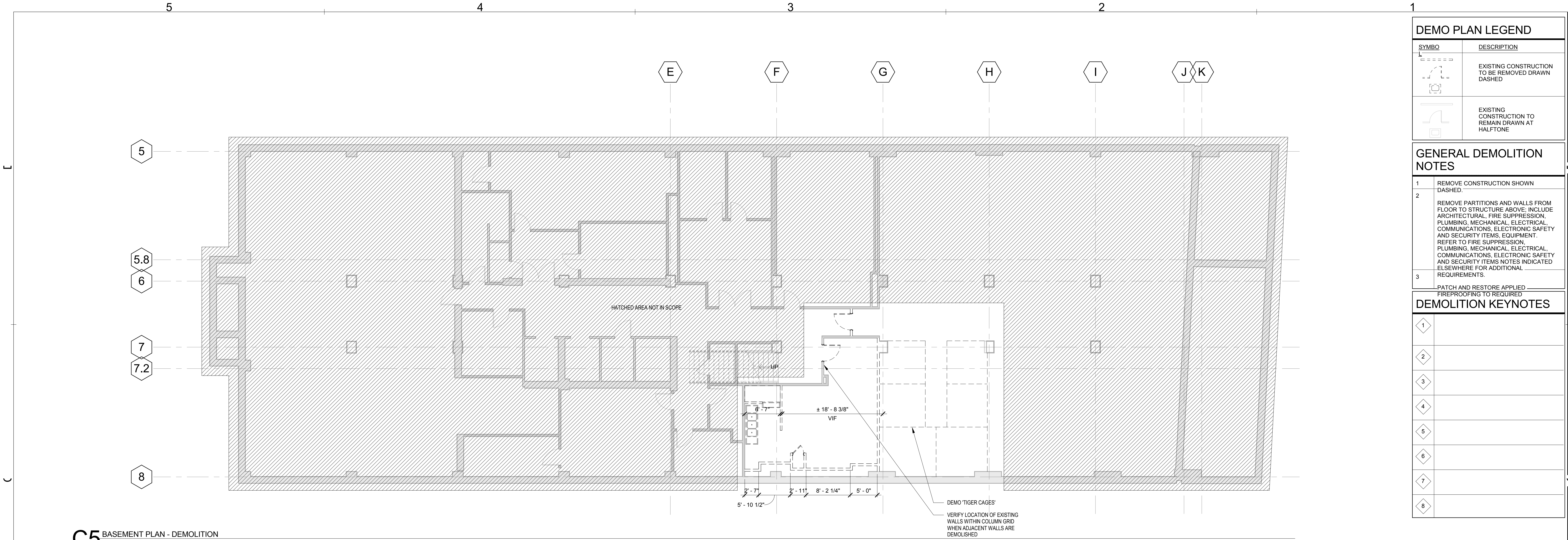
SHEET TITLE

COVER

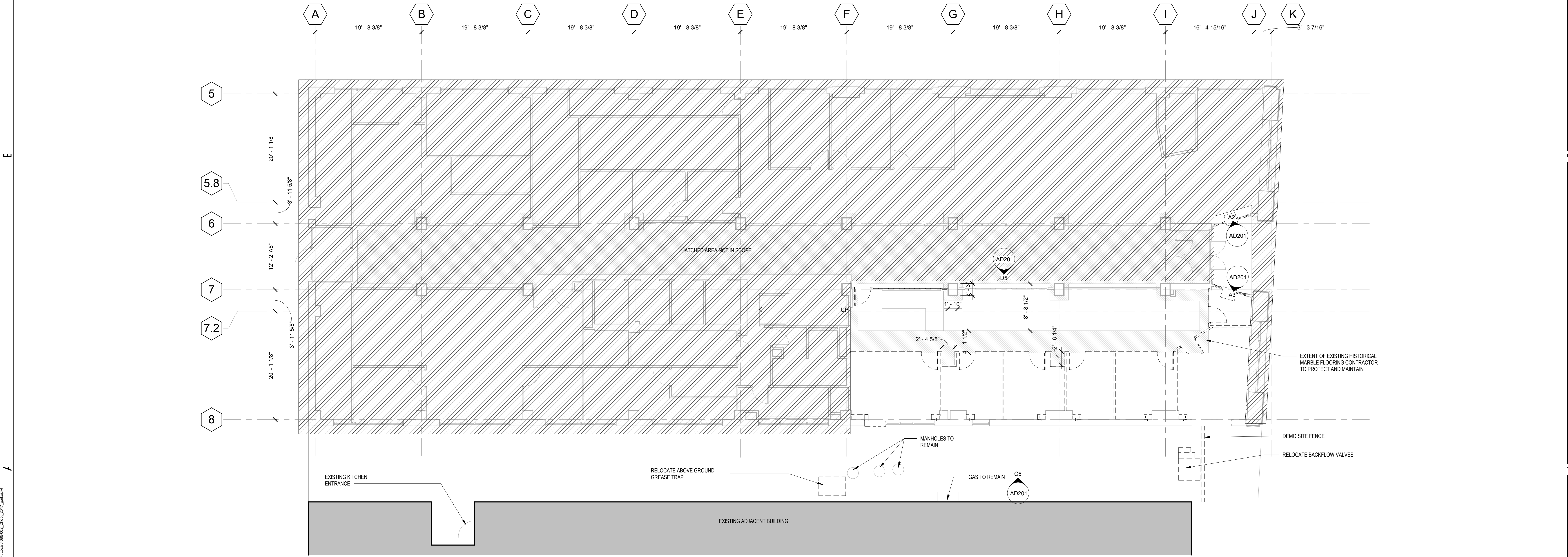
SHEET IDENTIFIER

G-000





C5 BASEMENT PLAN - DEMOLITION  
1/8" = 1'-0"



A5 FIRST FLOOR PLAN - DEMOLITION  
1/8" = 1'-0"

DEMO PLAN LEGEND	
SYMBOL	DESCRIPTION
	EXISTING CONSTRUCTION TO BE REMOVED DRAWN DASHED
	EXISTING CONSTRUCTION TO REMAIN DRAWN AT HALFTONE
GENERAL DEMOLITION NOTES	
1	REMOVE CONSTRUCTION SHOWN DASHED.
2	REMOVE PARTITIONS AND WALLS FROM FLOOR TO STRUCTURE ABOVE. INCLUDE ARCHITECTURAL, FIRE SUPPRESSION, PLUMBING, MECHANICAL, ELECTRICAL, COMMUNICATIONS, ELECTRONIC SAFETY AND SECURITY ITEMS, EQUIPMENT. REFER TO FIRE SUPPRESSION, PLUMBING, MECHANICAL, ELECTRICAL, COMMUNICATIONS, ELECTRONIC SAFETY AND SECURITY ITEMS NOTES INDICATED ELSEWHERE FOR ADDITIONAL REQUIREMENTS.
3	PATCH AND RESTORE APPLIED
DEMOLITION KEYNOTES	
1	
2	
3	
4	
5	
6	
7	
8	

ODELL

212 S. Tryon Street  
Suite 980  
Charlotte, NC 28281  
(T) 704-414-1000 (F) 704-414-1111  
www.odell.com

CHARLOTTE, NC  
CONSULTANT

RICHMOND, VA

CONSTRUCTION DOCUMENTS

PLACE CODE

SIGNAL SEAL

© 2017 ODELL Associates, Inc., All Rights Reserved

THE JOHNSTON BUILDING

212 South Tryon Street

DILWEG

TRUE

REVISION	DATE	DESCRIPTION
ADDENDA OR MODIFICATION		
CD	xx/xx/2017	CONSTRUCTION DOCUMENTS
DD	xx/xx/2017	DESIGN DEVELOPMENT
SD	xx/xx/2017	SCHEMATIC DESIGN
ISSUE	DATE	DESCRIPTION

FULL SET ISSUES

PROJECT NO: 4085-002

P.I.C.

P MGR.

P ARCH. M. Montgomery

DESIGN BY

JOB CAPTAIN

DRAWN BY Author

CHECKED BY Checker

SHEET TITLE

DEMOLITION PLAN

SHEET IDENTIFIER

AD100

8/2/2017 5:13:22 PM C:\Users\johndell\OneDrive\Documents\2017\Johnston\17

5 4 3 2 1

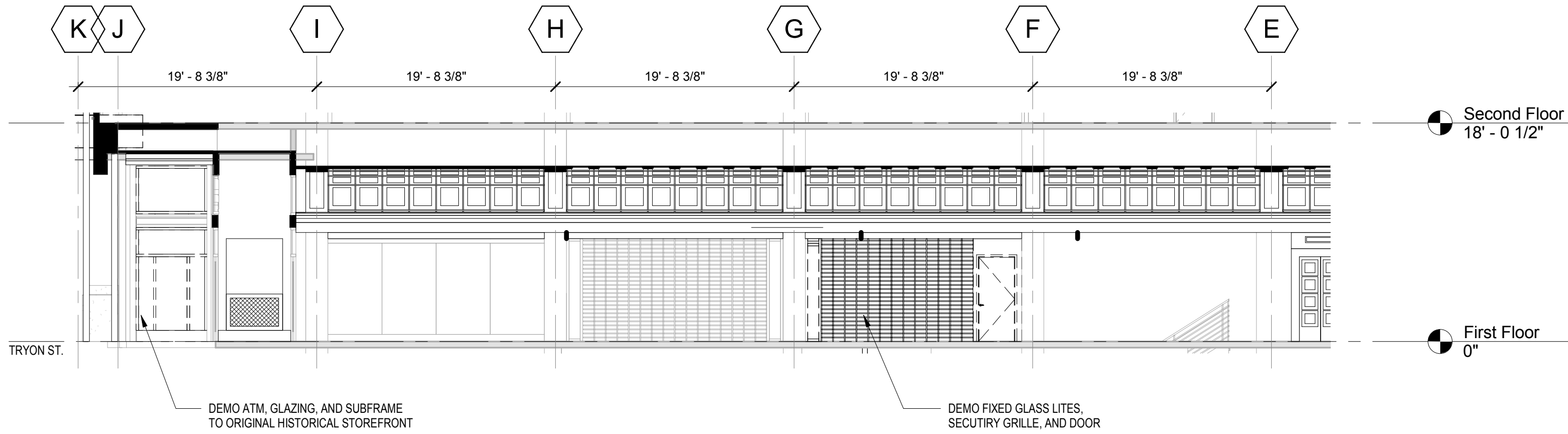
L

C

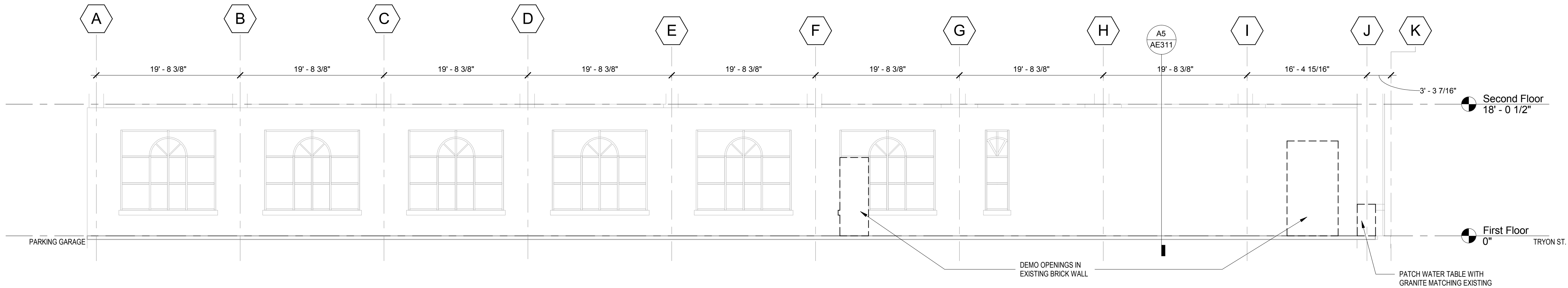
E

f

8/2/2017 5:13:25 PM C:\new\10466002\_Cons\3112\_dmlg.rvt



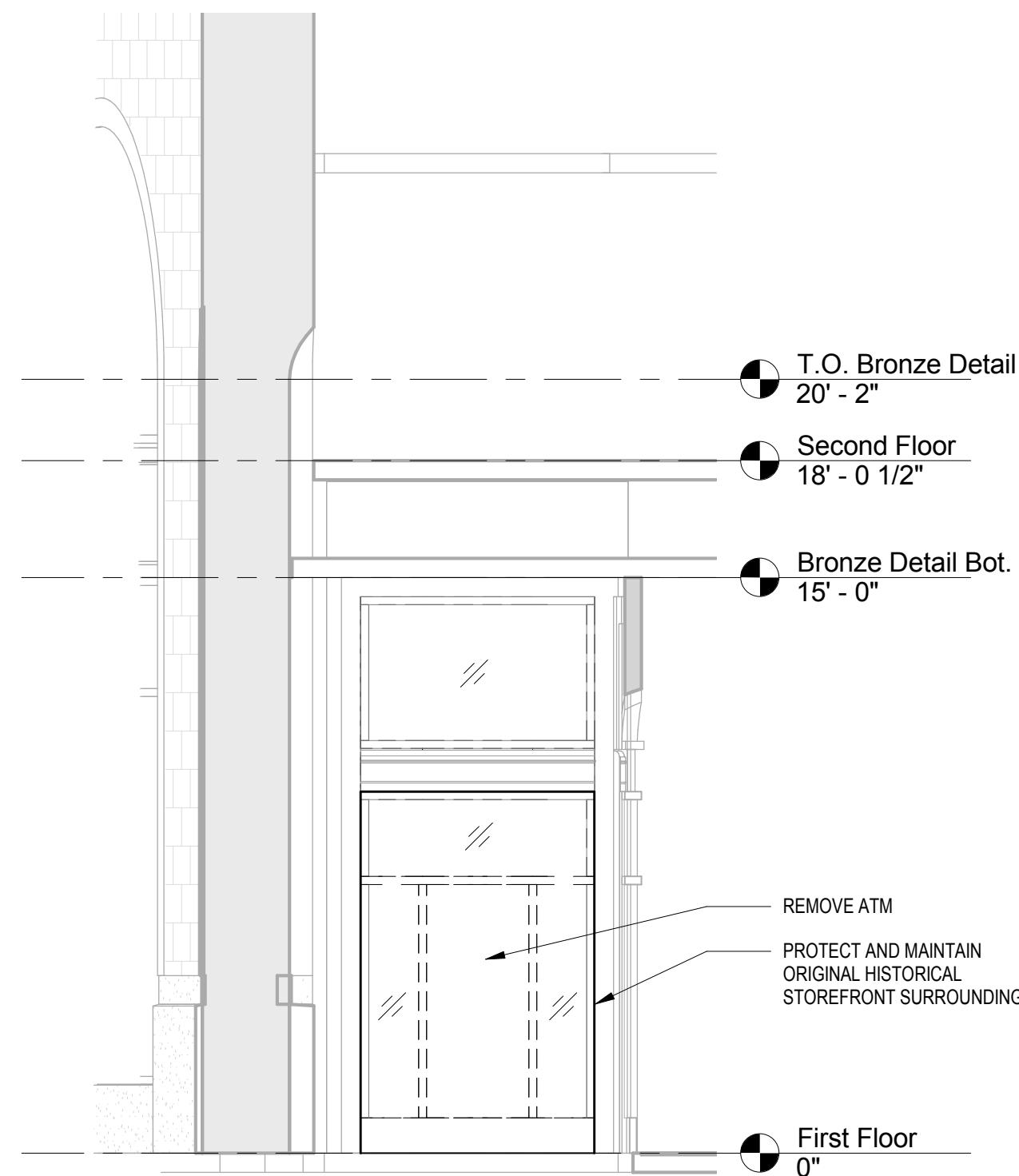
D5 NORTH LOBBY INTERIOR ELEVATION - DEMOLITION  
1/8" = 1'-0"



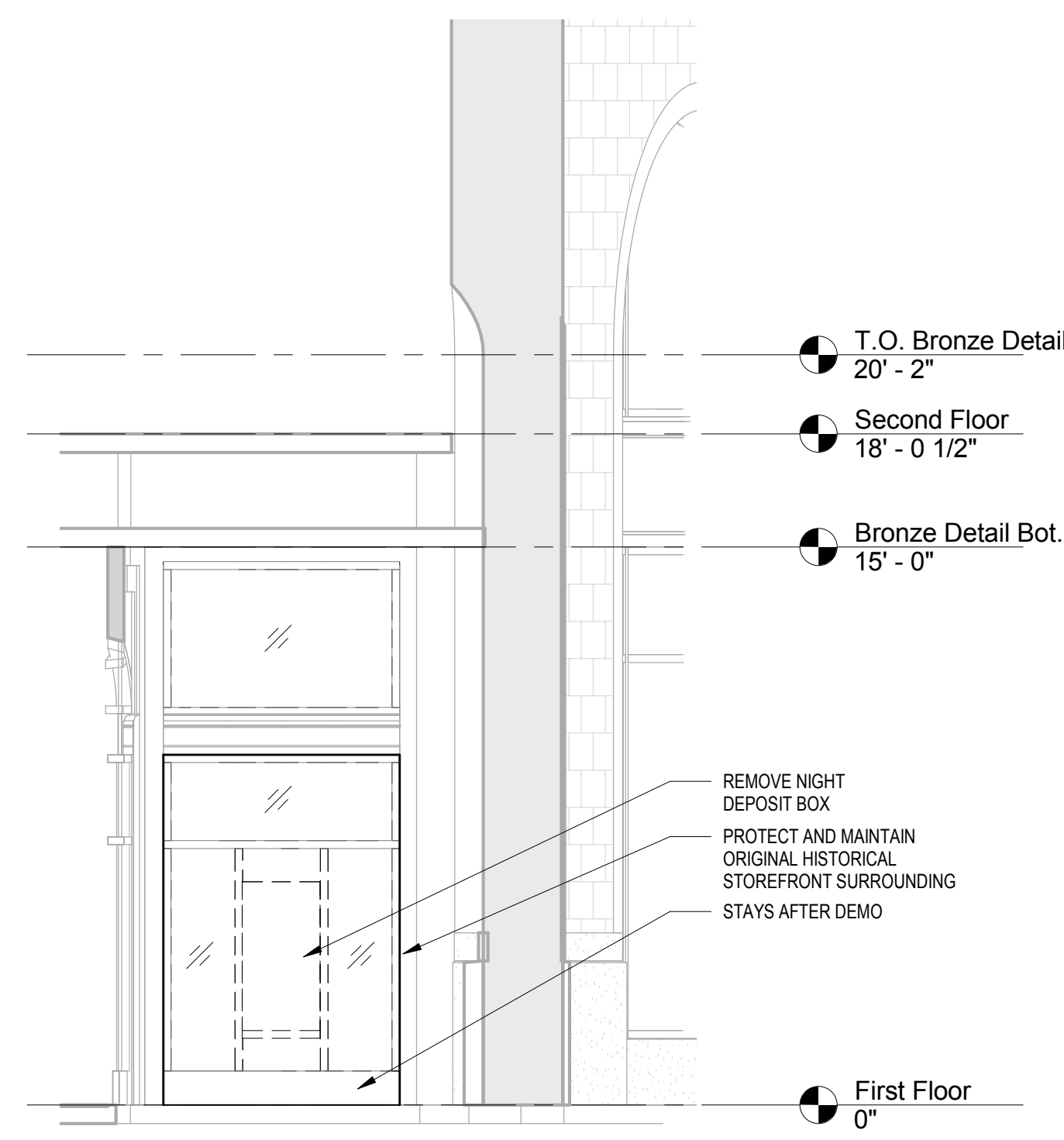
C5 SOUTH EXTERIOR ELEVATION - DEMOLITION  
1/8" = 1'-0"



A5 EAST EXTERIOR ELEVATION - DEMOLITION  
1/8" = 1'-0"



A3 NORTH ENTRY WINDOW ELEVATION - DEMOLITION  
1/4" = 1'-0"



A2 SOUTH ENTRY WINDOW ELEVATION - DEMOLITION  
1/4" = 1'-0"

DEMO PLAN LEGEND	
SYMBOL	DESCRIPTION
	EXISTING CONSTRUCTION TO BE REMOVED DRAWN DASHED
	EXISTING CONSTRUCTION TO REMAIN DRAWN AT HALFTONE
GENERAL DEMOLITION NOTES	
1	REMOVE CONSTRUCTION SHOWN DASHED.
2	REMOVE PARTITIONS AND WALLS FROM FLOOR TO STRUCTURE ABOVE. INCLUDE ARCHITECTURAL, FIRE SUPPRESSION, PLUMBING, MECHANICAL, ELECTRICAL, COMMUNICATIONS, ELECTRONIC SAFETY AND SECURITY ITEMS, EQUIPMENT. REFER TO FIRE SUPPRESSION, PLUMBING, MECHANICAL, ELECTRICAL, COMMUNICATIONS, ELECTRONIC SAFETY AND SECURITY ITEMS NOTES INDICATED ELSEWHERE FOR ADDITIONAL REQUIREMENTS.
3	PATCH AND RESTORE APPLIED FIREPROOFING TO REQUIRED
DEMOLITION KEYNOTES	
1	
2	
3	
4	
5	
6	
7	
8	

ODELL

212 S. Tryon Street  
Suite 980  
Charlotte, NC 28281  
(T) 704-414-1000 (F) 704-414-1111  
www.odell.com

CHARLOTTE, NC CONSULTANT RICHMOND, VA

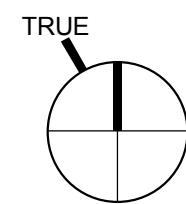
CONSTRUCTION DOCUMENTS

© 2017 ODELL Associates, Inc., All Rights Reserved

THE JOHNSTON BUILDING

212 South Tryon Street

DILWEG



REVISION	DATE	DESCRIPTION
ADDENDA OR MODIFICATION		
CD	xx/xx/2017	CONSTRUCTION DOCUMENTS
DD	xx/xx/2017	DESIGN DEVELOPMENT
SD	xx/xx/2017	SCHEMATIC DESIGN
ISSUE	DATE	DESCRIPTION

FULL SET ISSUES

PROJECT NO: 4085-002

P.I.C.

P MGR.

P ARCH. M. Montgomery

DESIGN BY

JOB CAPTAIN

DRAWN BY Author

CHECKED BY Checker

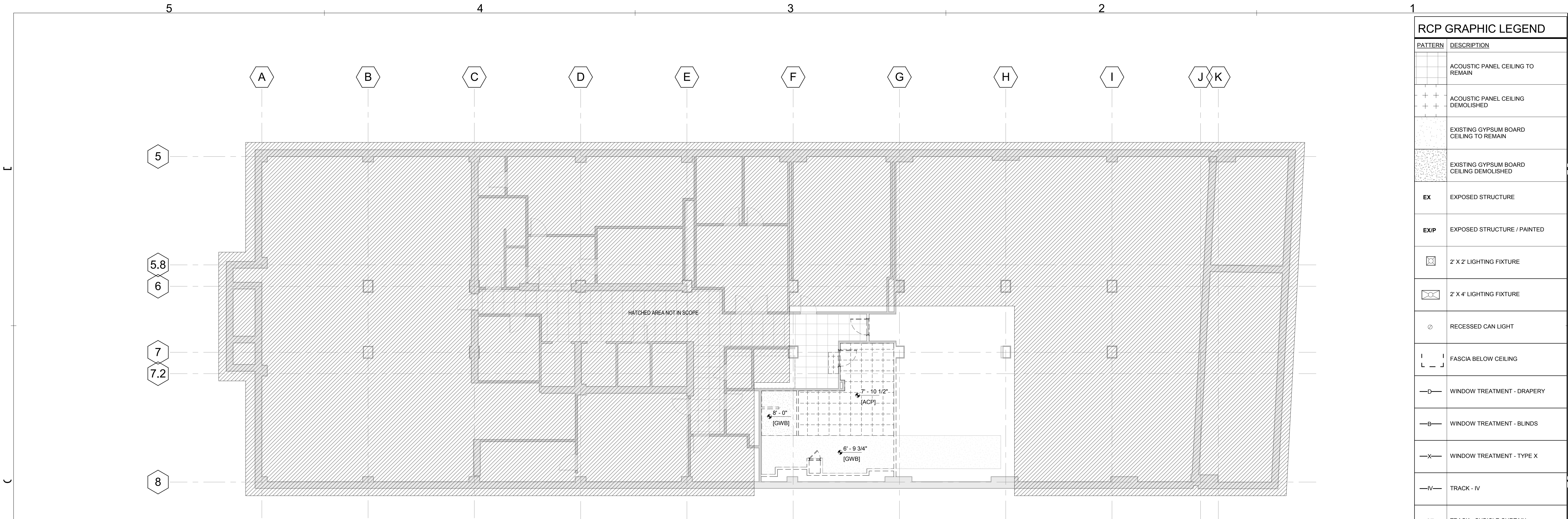
SHEET TITLE

DEMOLITION ELEVATIONS

SHEET IDENTIFIER

AD201





C5 BASEMENT REFLECTED CEILING PLAN - DEMOLITION  
1/8" = 1'-0"



A5 FIRST FLOOR REFLECTED CEILING PLAN - DEMOLITION  
1/8" = 1'-0"

RCP GRAPHIC LEGEND

PATTERN	DESCRIPTION
	ACOUSTIC PANEL CEILING TO REMAIN
	ACOUSTIC PANEL CEILING DEMOLISHED
	EXISTING GYPSUM BOARD CEILING TO REMAIN
	EXISTING GYPSUM BOARD CEILING DEMOLISHED
EX	EXPOSED STRUCTURE
EXP	EXPOSED STRUCTURE / PAINTED
	2' X 2' LIGHTING FIXTURE
	2' X 4' LIGHTING FIXTURE
	RECESSED CAN LIGHT
	FASCIA BELOW CEILING
	WINDOW TREATMENT - DRAPERY
	WINDOW TREATMENT - BLINDS
	WINDOW TREATMENT - TYPE X
	TRACK - IV
	TRACK - CUBICLE CURTAIN

RCP DEMOLITION KEYNOTES

1	
2	
3	

ODELL

212 S. Tryon Street  
Suite 980  
Charlotte, NC 28281  
(T) 704-414-1000 (F) 704-414-1111  
www.odell.com

CHARLOTTE, NC  
CONSULTANT

RICHMOND, VA

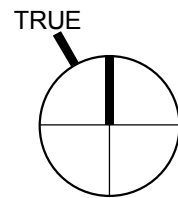
CONSTRUCTION DOCUMENTS

© 2017 ODELL Associates, Inc., All Rights Reserved

THE JOHNSTON BUILDING

212 South Tryon Street

DILWEG



REVISION	DATE	DESCRIPTION
ADDENDA OR MODIFICATION		
CD	xx/xx/2017	CONSTRUCTION DOCUMENTS
DD	xx/xx/2017	DESIGN DEVELOPMENT
SD	xx/xx/2017	SCHEMATIC DESIGN
ISSUE	DATE	DESCRIPTION

PROJECT NO: 4085-002

P.I.C.

P MGR.

P ARCH. M. Montgomery

DESIGN BY

JOB CAPTAIN

DRAWN BY Author

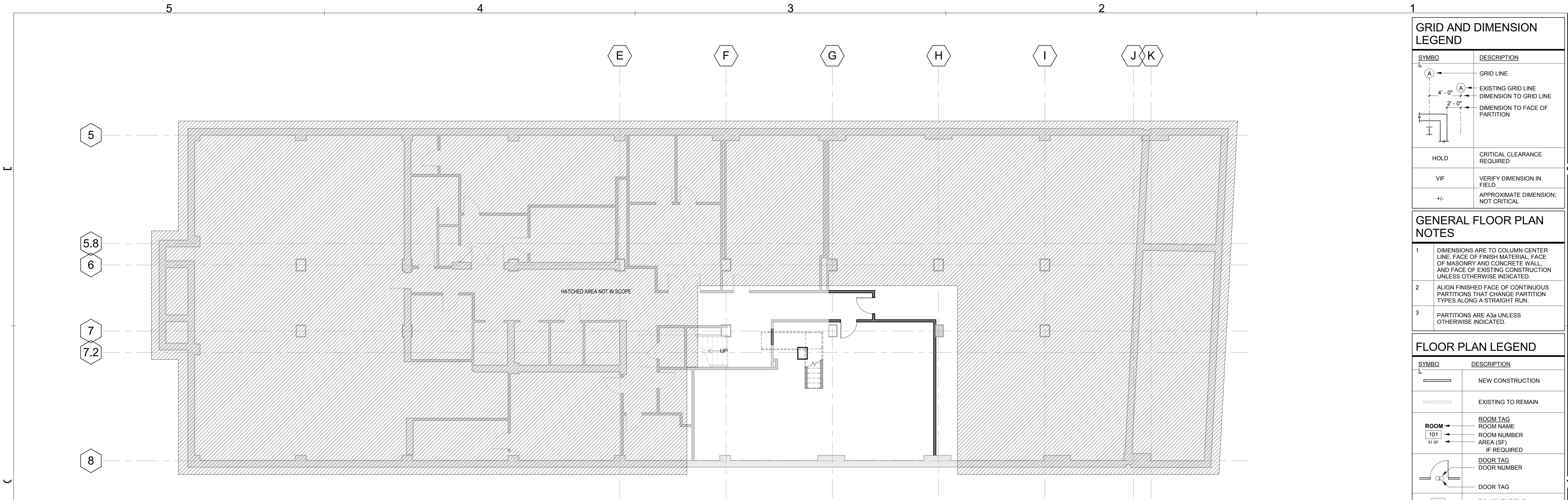
CHECKED BY Checker

SHEET TITLE

DEMOLITION ENLARGED PLANS, REFLECTED CEILING PLANS

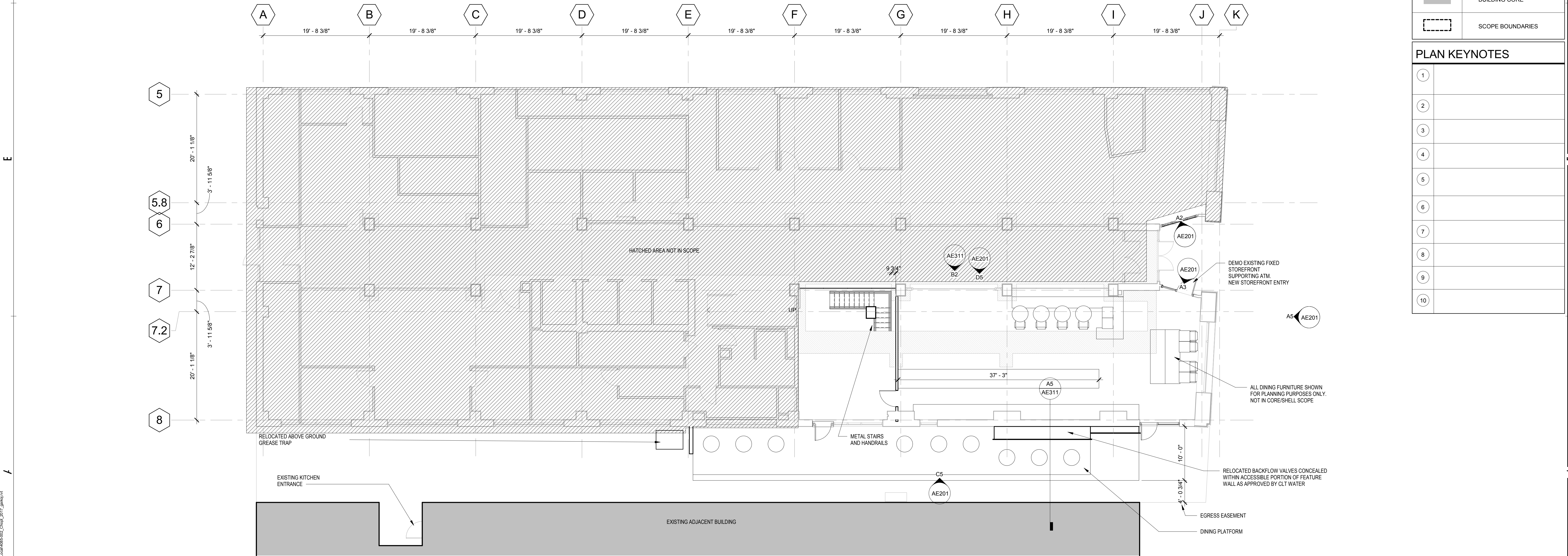
SHEET IDENTIFIER

AD401



C5 BASEMENT PLAN - NEW CONSTRUCTION

1/8" = 1'-0"



A5 FIRST FLOOR PLAN - NEW CONSTRUCTION

1/8" = 1'-0"

GRID AND DIMENSION  
LEGEND

SYMBOL	DESCRIPTION
	GRID LINE
	EXISTING GRID LINE
	DIMENSION TO GRID LINE
	DIMENSION TO FACE OF PARTITION
	HOLD
	VERIFY DIMENSION IN FIELD
	APPROXIMATE DIMENSION; NOT CRITICAL

GENERAL FLOOR PLAN  
NOTES

- DIMENSIONS ARE TO COLUMN CENTER LINE, FACE OF FINISH MATERIAL, FACE OF MASONRY AND CONCRETE WALL, AND FACE OF EXISTING CONSTRUCTION UNLESS OTHERWISE INDICATED.
- ALIGN FINISHED FACE OF CONTINUOUS PARTITIONS THAT CHANGE PARTITION TYPES ALONG A STRAIGHT RUN.
- PARTITIONS ARE A33 UNLESS OTHERWISE INDICATED.

FLOOR PLAN LEGEND

SYMBOL	DESCRIPTION
	NEW CONSTRUCTION
	EXISTING TO REMAIN
	ROOM TAG ROOM NAME ROOM NUMBER AREA (SF) IF REQUIRED
	DOOR TAG DOOR NUMBER
	DOOR TAG
	EQUIPMENT TAG
	TOILET ACCESSORY TAG
	WINDOW TAG
	PROVIDE LEAD SHIELDING. REFER TO PHYSICIST REPORT FOR THICKNESS.
	METAL LADDER
	METAL LADDER WITH SAFETY CAGE
	BUILDING CORE
	SCOPE BOUNDARIES

PLAN KEYNOTES

1	
2	
3	
4	
5	
6	
7	
8	
9	
10	

ODELL

212 S. Tryon Street  
Suite 980  
Charlotte, NC 28281  
(T) 704-414-1000 (F) 704-414-1111  
www.odell.com

CHARLOTTE, NC  
CONSULTANT

RICHMOND, VA

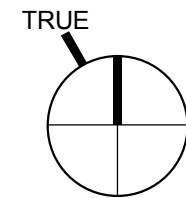
CONSTRUCTION  
DOCUMENTS

© 2017 ODELL Associates, Inc., All Rights Reserved

THE JOHNSTON  
BUILDING

212 South Tryon Street

DILWEG



REVISION	DATE	DESCRIPTION
ADDENDA OR MODIFICATION		
CD	xx/xx/2017	CONSTRUCTION DOCUMENTS
DD	xx/xx/2017	DESIGN DEVELOPMENT
SD	xx/xx/2017	SCHEMATIC DESIGN
ISSUE	DATE	DESCRIPTION

FULL SET ISSUES

PROJECT NO: 4085-002

P.I.C.

P MGR.

P ARCH. M. Montgomery

DESIGN BY

JOB CAPTAIN

DRAWN BY Author

CHECKED BY Checker

SHEET TITLE

FLOOR PLAN

SHEET IDENTIFIER

AE100

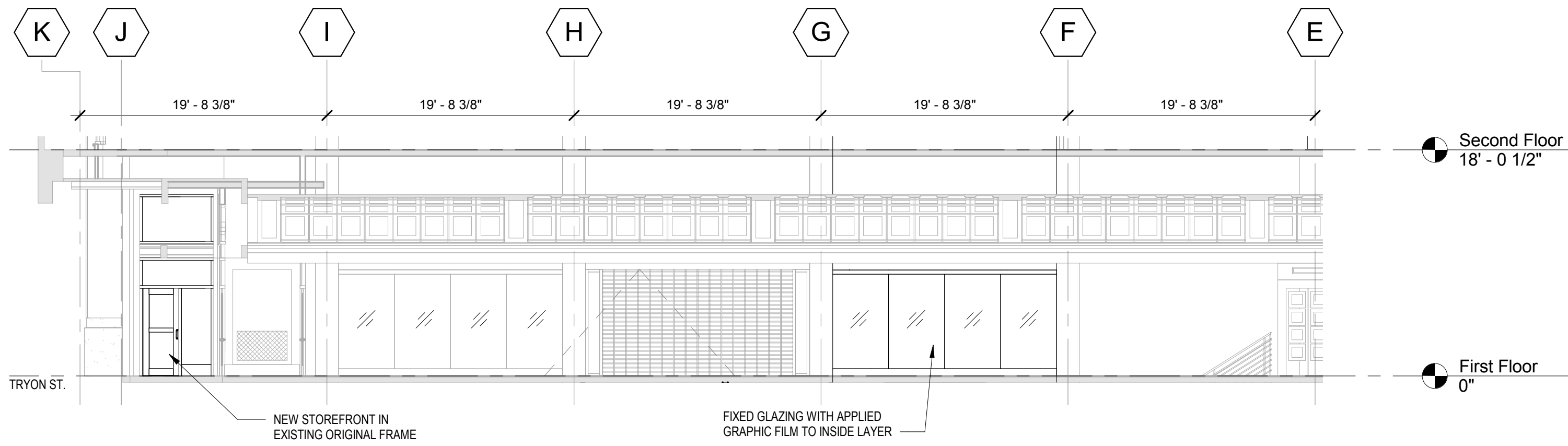
5

4

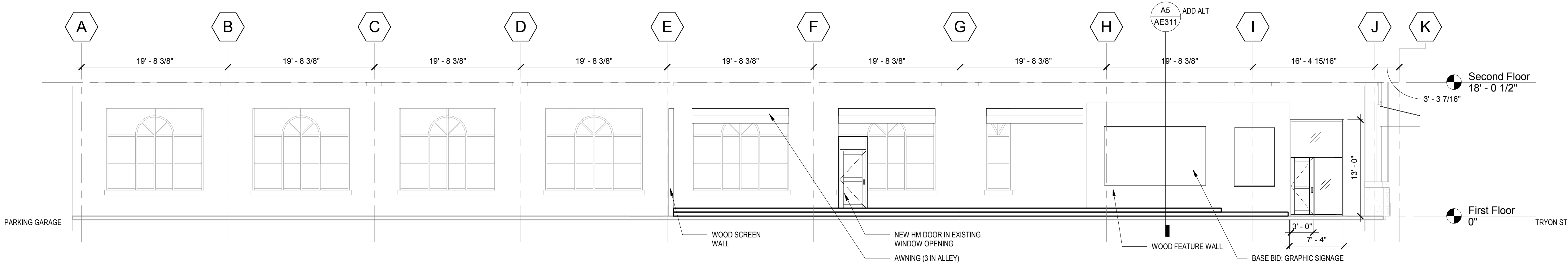
3

2

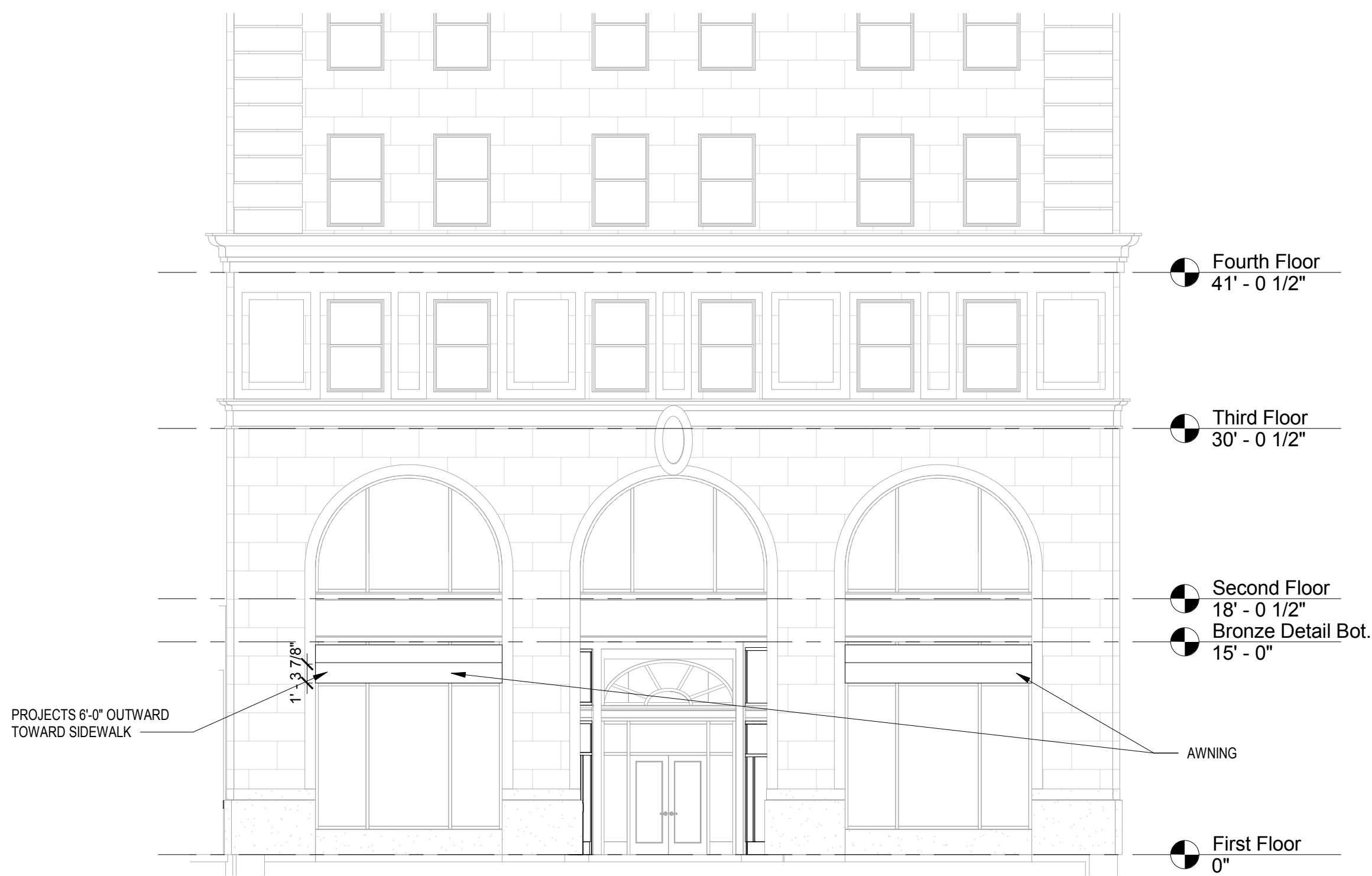
1



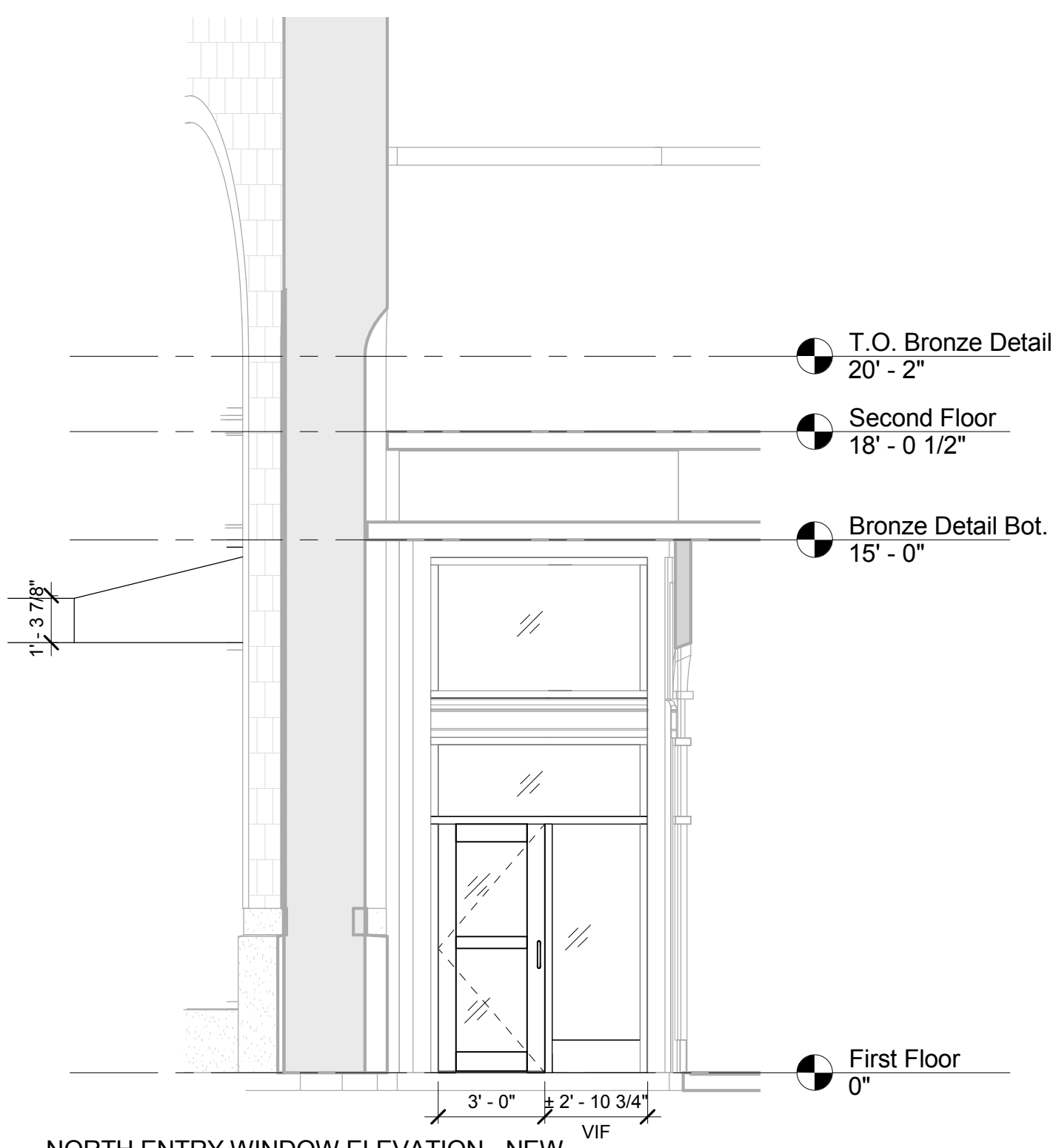
**D5** NORTH LOBBY INTERIOR ELEVATION - NEW CONSTRUCTION  
1/8" = 1'-0"



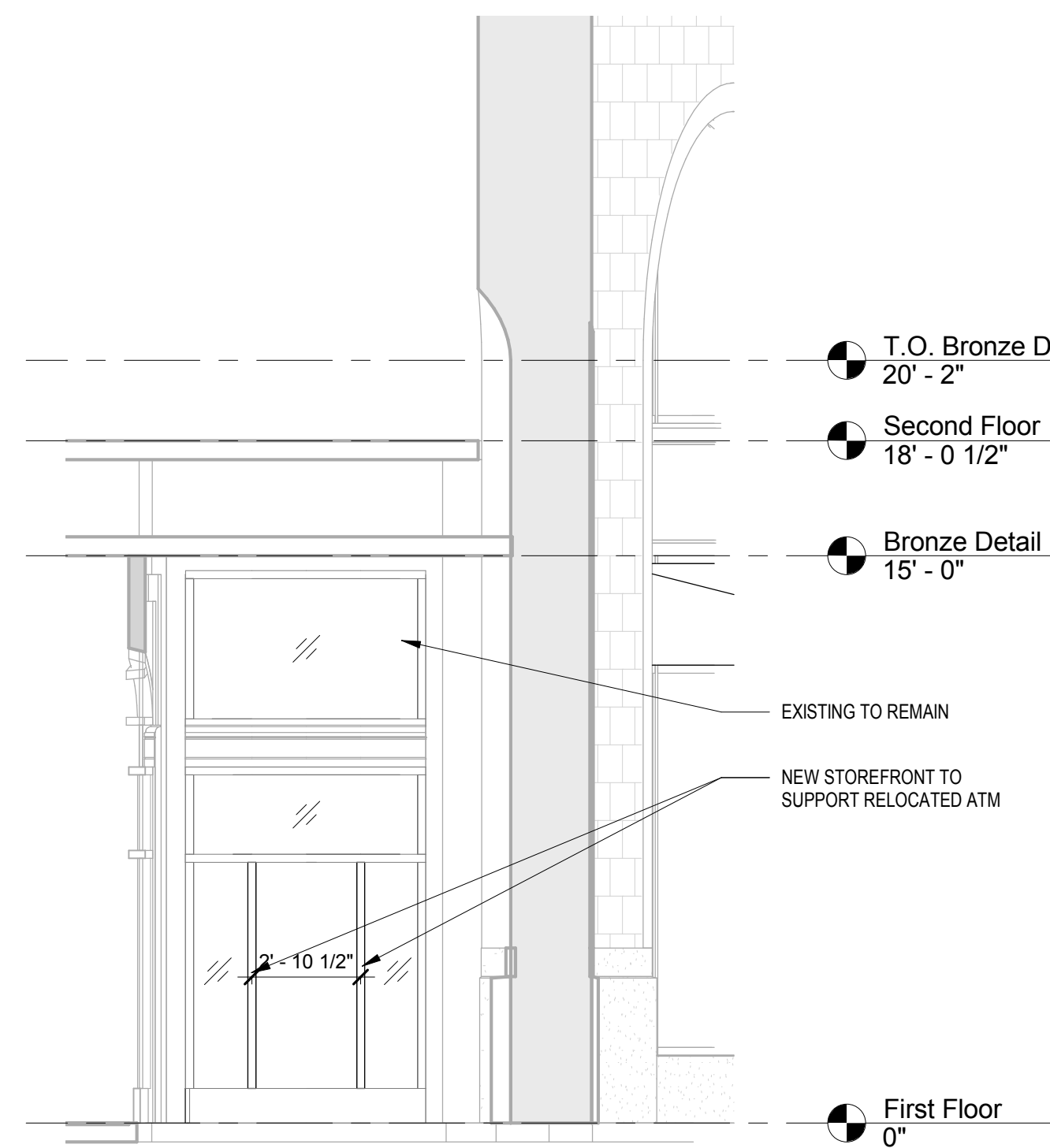
**C5** SOUTH EXTERIOR ELEVATION - NEW CONSTRUCTION  
1/8" = 1'-0"



**A5** EAST EXTERIOR ELEVATION - NEW CONSTRUCTION  
1/8" = 1'-0"



**A3** NORTH ENTRY WINDOW ELEVATION - NEW CONSTRUCTION  
1/4" = 1'-0"



**A2** SOUTH ENTRY WINDOW ELEVATION - NEW CONSTRUCTION  
1/4" = 1'-0"

## GLASS LEGEND

PATTERN	DESCRIPTION
GL-1	VISION GLASS
GL-2	SPANDREL GLASS
T GL-3	TEMPERED GLASS

## ELEVATION GRAPHICS

PATTERN	DESCRIPTION
BRICK	BRICK
PRECAST	PRECAST
CAST STONE	CAST STONE
EXPOSED CONCRETE	EXPOSED CONCRETE
COMPOSITE METAL PANEL	COMPOSITE METAL PANEL
INSULATED METAL PANEL	INSULATED METAL PANEL
METAL SIDING	METAL SIDING
EIFS	EIFS

**ODELL**

212 S. Tryon Street  
Suite 980  
Charlotte, NC 28281  
(T) 704-414-1000 (F) 704-414-1111  
www.odell.com

CHARLOTTE, NC  
CONSULTANT

RICHMOND, VA

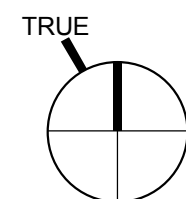
## CONSTRUCTION DOCUMENTS

© 2017 ODELL Associates, Inc., All Rights Reserved

## THE JOHNSTON BUILDING

212 South Tryon Street

DILWEG



REVISION	DATE	DESCRIPTION
ADDENDA OR MODIFICATION		
CD	xx/xx/2017	CONSTRUCTION DOCUMENTS
DD	xx/xx/2017	DESIGN DEVELOPMENT
SD	xx/xx/2017	SCHEMATIC DESIGN
ISSUE	DATE	DESCRIPTION

PROJECT NO: 4085-002

P.I.C.

P MGR.

P ARCH.

DESIGN BY

JOB CAPTAIN

DRAWN BY

CHECKED BY

M. Montgomery

Author

Checker

SHEET TITLE

## BUILDING ELEVATIONS

SHEET IDENTIFIER

**AE201**

5

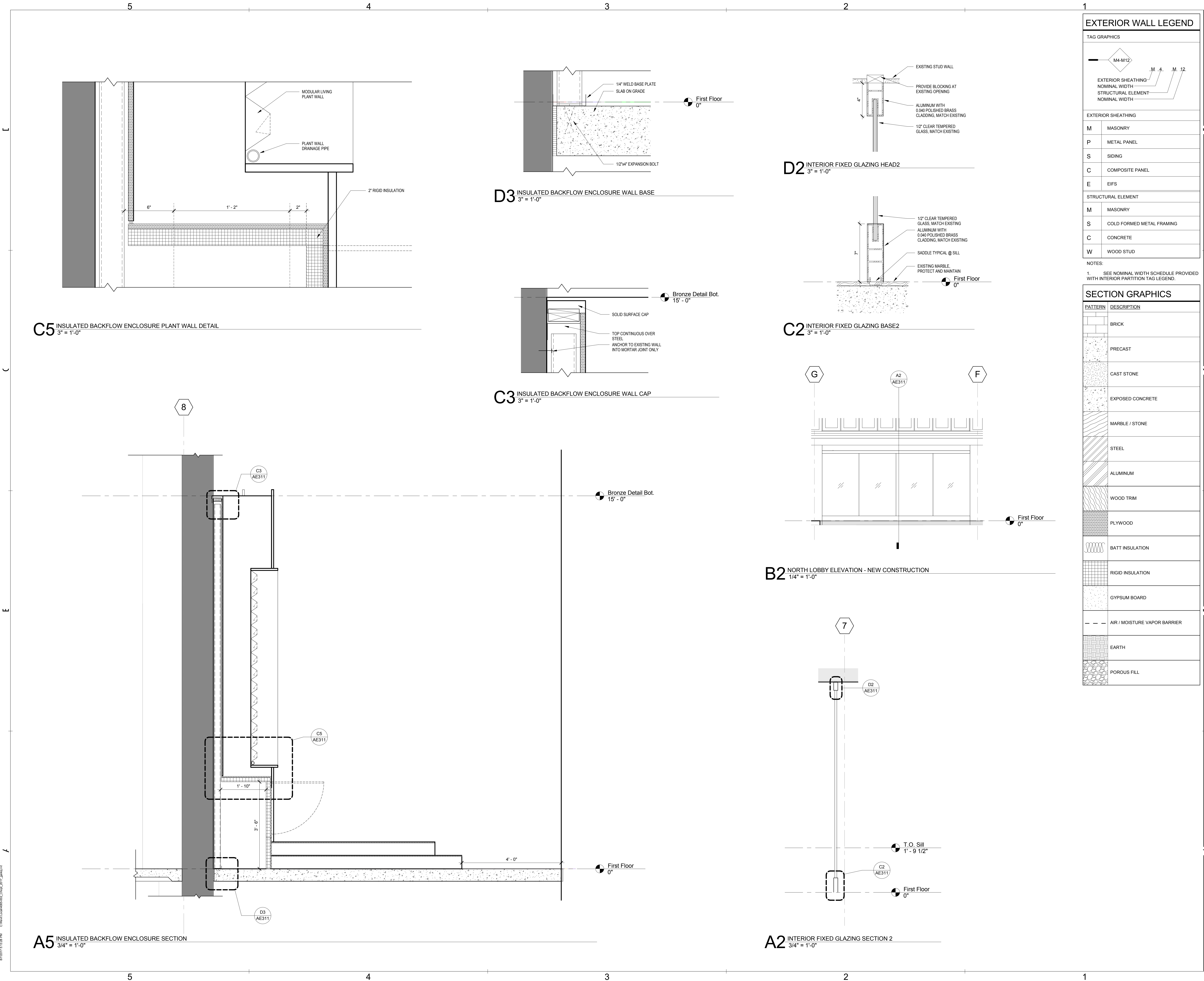
4

3

2

1





ODELL

212 S. Tryon Street  
Suite 980  
Charlotte, NC 28281  
(T) 704-414-1000 (F) 704-414-1111  
www.odell.com

CHARLOTTE, NC  
CONSULTANT

RICHMOND, VA

CONSTRUCTION DOCUMENTS

PLACE CODE

SIGNAL SEAL

© 2017 ODELL Associates, Inc., All Rights Reserved

THE JOHNSTON BUILDING

212 South Tryon Street

DILWEG

TRUE

1

REVISION	DATE	DESCRIPTION
ADDENDA OR MODIFICATION		
CD	xx/xx/2017	CONSTRUCTION DOCUMENTS
DD	xx/xx/2017	DESIGN DEVELOPMENT
SD	xx/xx/2017	SCHEMATIC DESIGN
ISSUE	DATE	DESCRIPTION

FULL SET ISSUES

PROJECT NO: 4085-002

P.I.C.

P MGR.

P ARCH. M. Montgomery

DESIGN BY

JOB CAPTAIN

DRAWN BY Author

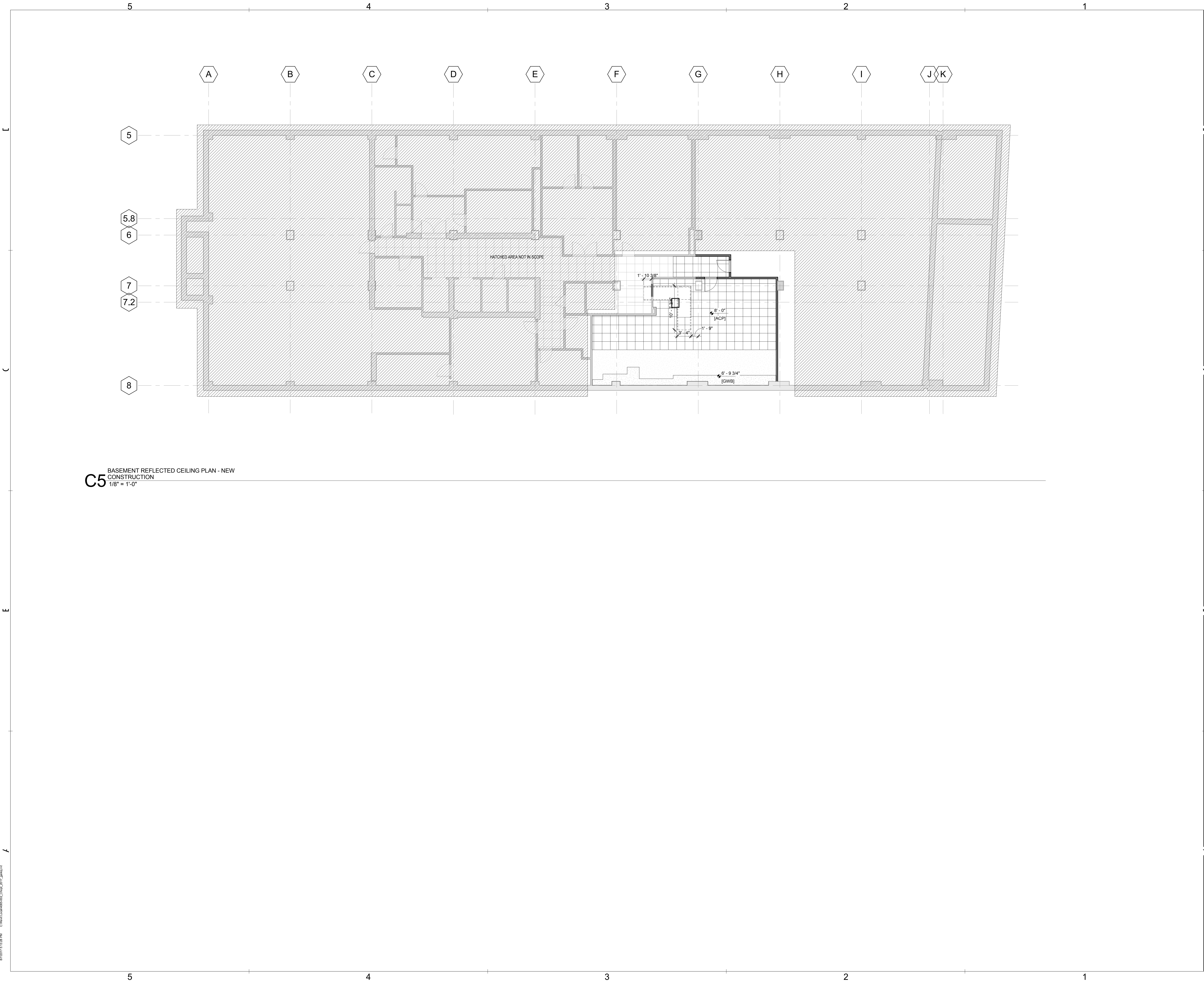
CHECKED BY Checker

SHEET TITLE

EXTERIOR WALL SECTIONS

SHEET IDENTIFIER

AE311



ODELL

212 S. Tryon Street  
Suite 980  
Charlotte, NC 28281  
(T) 704-414-1000 (F) 704-414-1111  
www.odell.com

CHARLOTTE, NC  
CONSULTANT

RICHMOND, VA

CONSTRUCTION  
DOCUMENTS

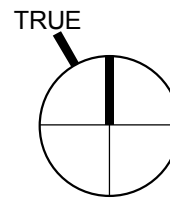
PLACE CODE SIGNAL SEAL

© 2017 ODELL Associates, Inc., All Rights Reserved

THE JOHNSTON  
BUILDING

212 South Tryon Street

DILWEG



REVISION	DATE	DESCRIPTION
ADDENDA OR MODIFICATION		
CD	xx/xx/2017	CONSTRUCTION DOCUMENTS
DD	xx/xx/2017	DESIGN DEVELOPMENT
SD	xx/xx/2017	SCHEMATIC DESIGN
ISSUE	DATE	DESCRIPTION

FULL SET ISSUES

PROJECT NO: 4085-002

P.I.C.

P MGR.

P ARCH. M. Montgomery

DESIGN BY

JOB CAPTAIN

DRAWN BY Author

CHECKED BY Checker

SHEET TITLE

REFLECTED  
CEILING PLAN - NEW  
CONSTRUCTION

SHEET IDENTIFIER

AE401